

Hurricane Jeanne

Fact Sheet

Event date: September 13 - 28, 2004
 Peak winds: 120 mph
 Landfall winds: 120 mph

Minimum pressure: 950 mb
 Landfall pressure: 950 mb
 Maximum storm surge: 4 ft

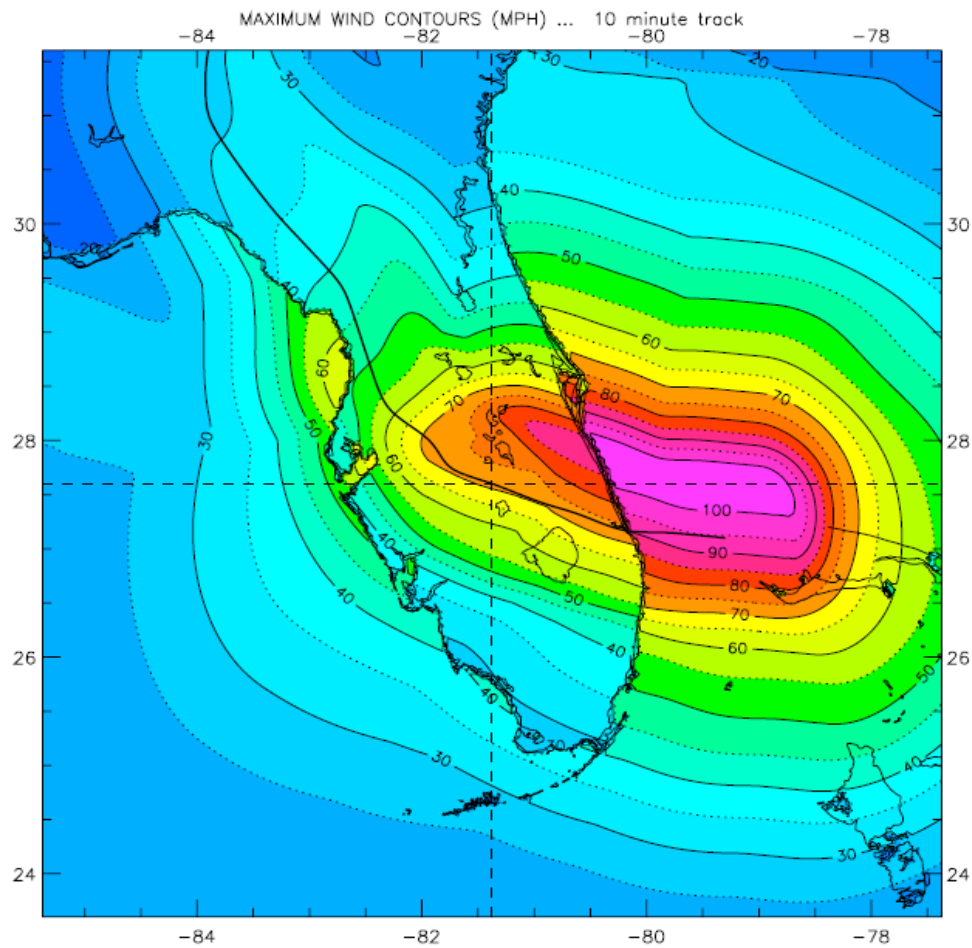


Figure 1. Hurricane Jeanne estimated wind swath of maximum sustained winds.

Summary of event:

Hurricane Jeanne made landfall on the east coast of Florida early on September 26, 2004 with the center of its 50 mile wide eye crossing the coast at the southern end of Hutchinson Island just east of Stuart, FL. The highest sustained surface wind reported was 90 mph at the Melbourne National Weather Service office. A measurement of 79 mph was taken on the north shore of Lake Okeechobee. The highest wind gust reported was 127 mph at Fort Pierce inlet. Jeanne produced widespread rainfall across the state where up to 8 inches accumulated in select areas. A narrow

band of 11-13 inches was observed in the vicinity of the eye wall track over Osceola, Broward, and Indian River counties of east central Florida. The Tampa Bay area saw a negative storm surge of about 4.5 feet as winds were blowing offshore, however, once the winds switched to onshore a surge of about 3.5 feet above normal followed.

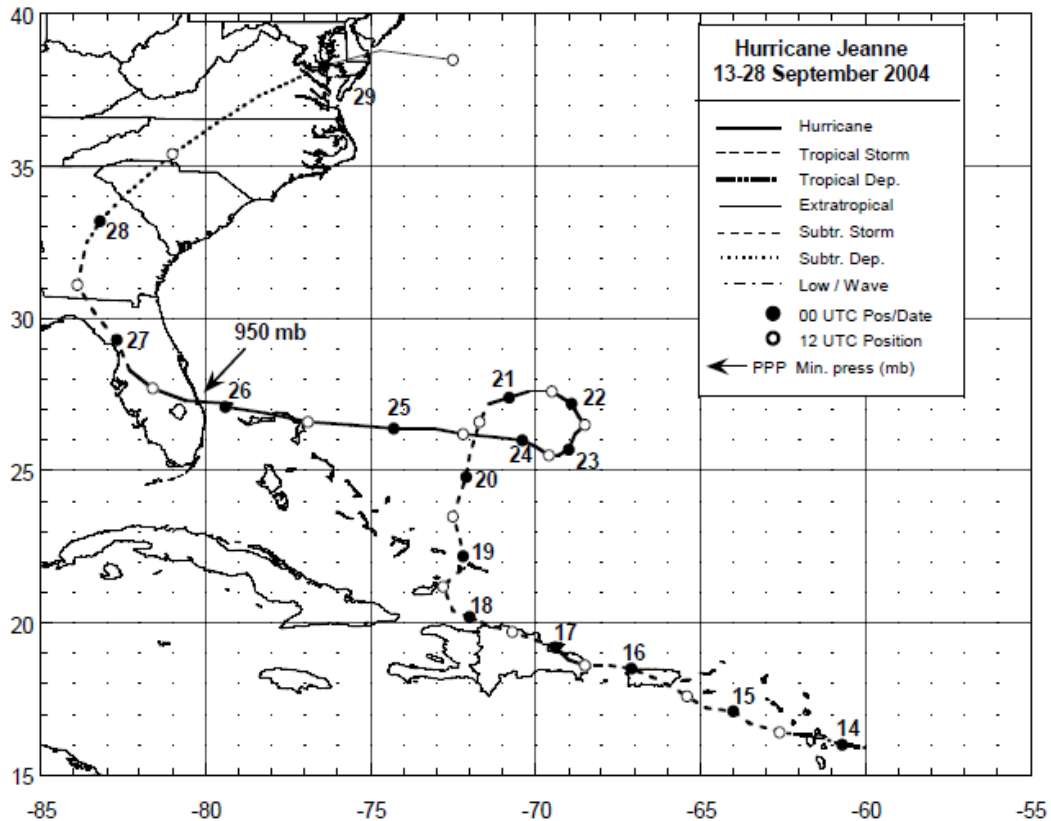


Figure 2. Best track position for Hurricane Jeanne, September 13-28, 2004.

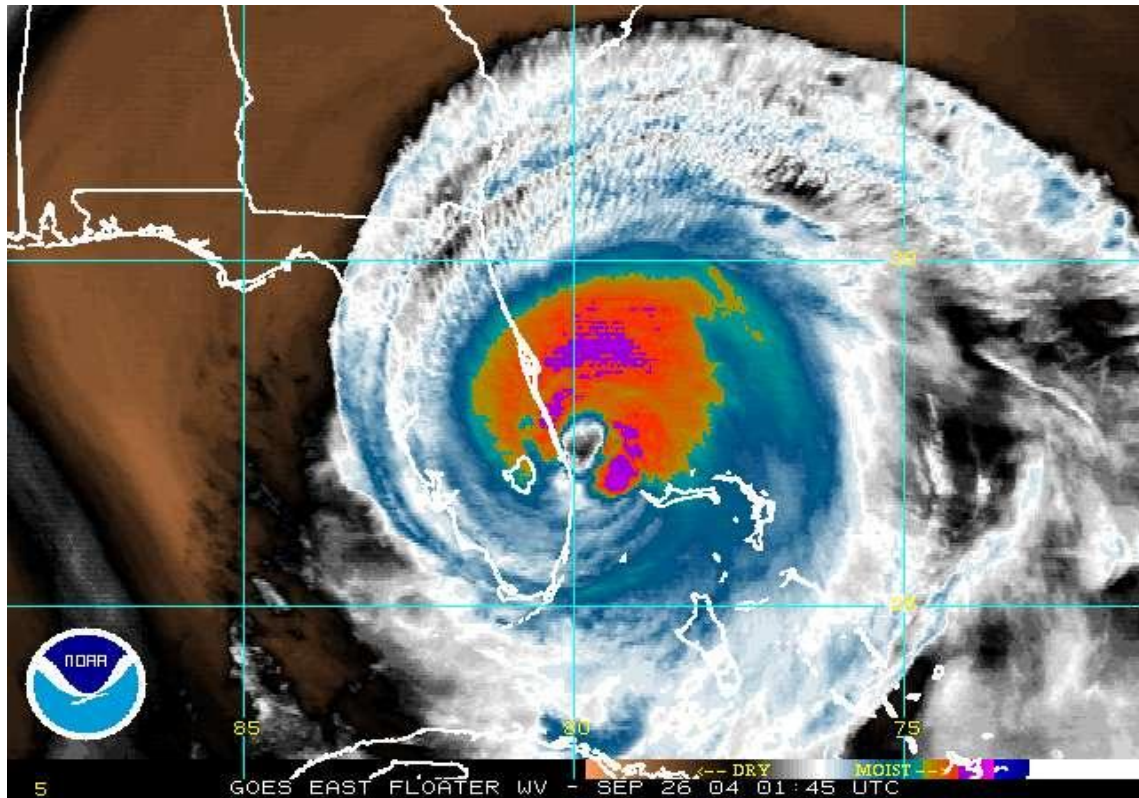


Figure 3. Hurricane Jeanne just before landfall in Stuart county, FL.

NOAA AND THE PRESERVE AMERICA



Initiative

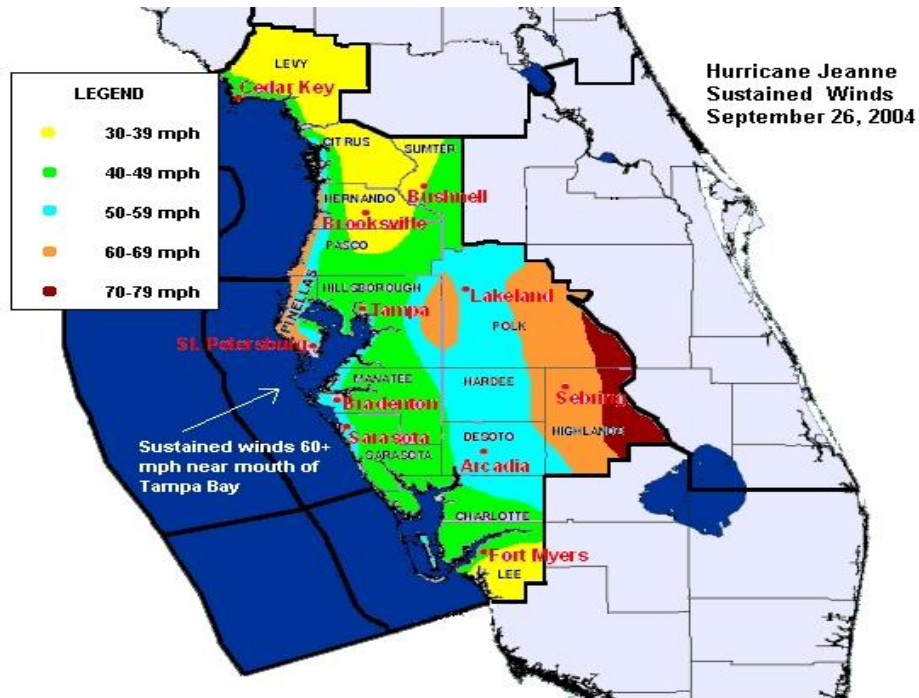


Figure 4. Hurricane Jeanne sustained winds for the Tampa Bay area.

Links for more information:

- <http://www.nhc.noaa.gov/HAW2/english/history.shtml#jeanne>.
- <http://www.nhc.noaa.gov/2004jeanne.shtml>.
- <http://www.srh.noaa.gov/tbw/?n=tampabayweatherhurricanejeanne>.

Acknowledgements: National Weather Service, Tampa Bay Region.