



# NOAA - National Weather Service

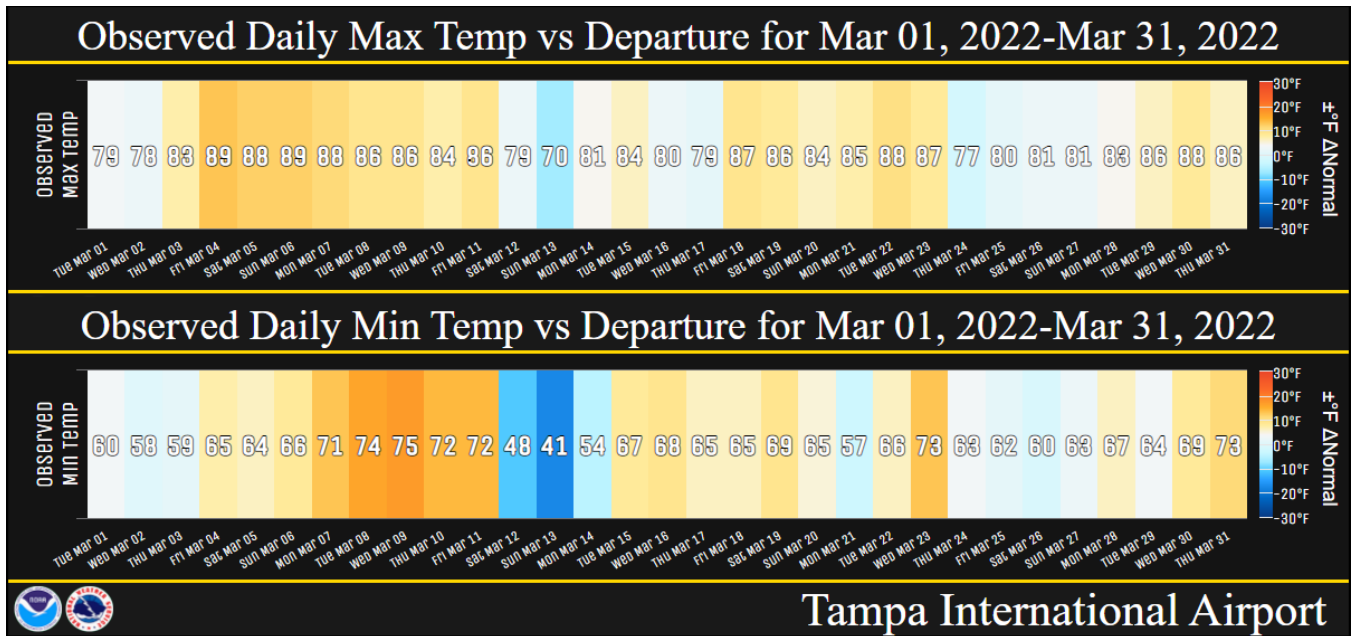
Tampa Bay Area

2525 14th Avenue SE, Ruskin, Florida 33570

813-645-2323 <https://weather.gov/tampabay>

## March 2022 Climate Summary for West Central and Southwest Florida

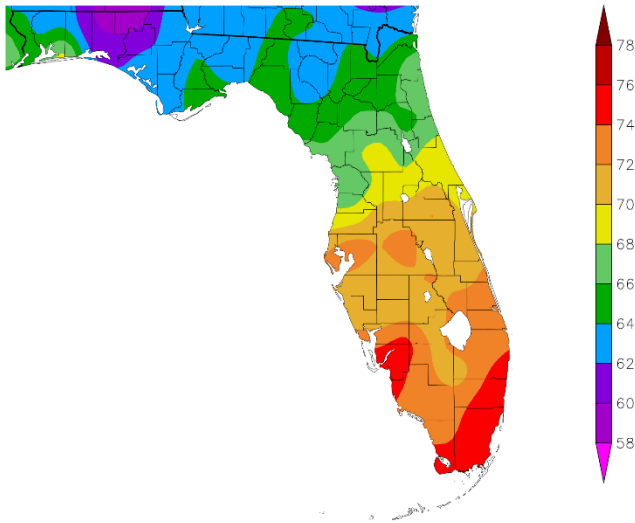
March 2022 was a rather warm month with only a brief period around mid-month with below normal temperatures as can be seen in the graphic below for Tampa. For the month temperatures averaged from about 2.5°F to over 5°F above normal across the area with several locations ending up in the Top Ten Warmest for March.



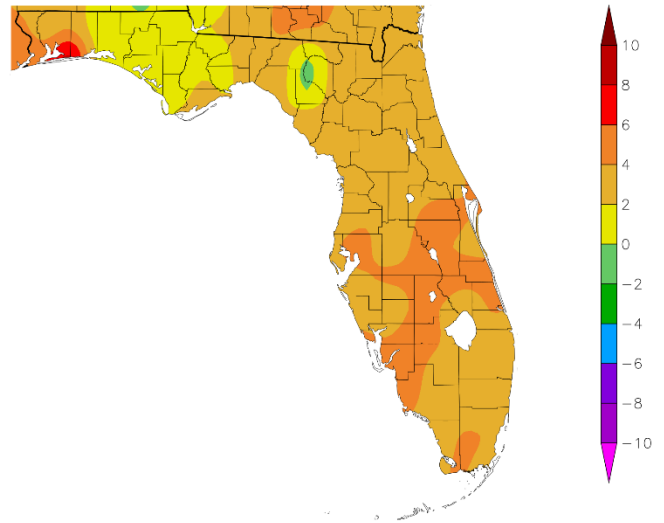
**MARCH TEMPERATURE RANKINGS (°F) :**

| Location                | Rank               | March 2022<br>Avg Temp | Normal<br>Mar Temp | Dep fm<br>Normal | Records<br>Began |
|-------------------------|--------------------|------------------------|--------------------|------------------|------------------|
| Fort Myers Area         | 2nd Warmest        | 75.8°                  | 70.3°              | +5.5°            | Jan 1902         |
| Tampa Area              | 3rd Warmest (tie)  | 73.9°                  | 68.6°              | +5.3°            | Apr 1890         |
| Winter Haven Area       | 7th Warmest (tie)  | 72.5°                  | 69.1°              | +3.4°            | Mar 1941         |
| Plant City              | 5th Warmest (tie)  | 72.4°                  | 68.7°              | +3.7°            | Jan 1893         |
| St Petersburg Area      | 11th Warmest (tie) | 72.4°                  | 69.0°              | +3.4°            | Aug 1914         |
| Venice                  | 5th Warmest        | 72.1°                  | 67.7°              | +4.4°            | May 1955         |
| Punta Gorda Area        | 11th Warmest (tie) | 72.1°                  | 68.5°              | +3.6°            | May 1914         |
| Lakeland Area           | 10th Warmest (tie) | 72.0°                  | 68.3°              | +3.7°            | Jan 1915         |
| Sarasota-Bradenton Area | 6th Warmest        | 71.7°                  | 68.1°              | +3.6°            | Jan 1911         |
| Archbold Bio Stn        | 4th Warmest        | 70.8°                  | 67.1°              | +3.7°            | Jan 1969         |
| Bartow                  | 17th Warmest (tie) | 70.8°                  | 67.7°              | +3.1°            | Jun 1892         |
| St. Leo                 | 21st Warmest       | 70.2°                  | 66.4°              | +3.8°            | Apr 1895         |
| Tarpon Springs          | 18th Warmest (tie) | 69.9°                  | 66.8°              | +3.1°            | Jan 1892         |
| Wauchula 2 N            | 18th Warmest (tie) | 69.7°                  | 66.2°              | +3.5°            | Jan 1933         |
| Myakka River State Park | 21st Warmest       | 69.3°                  | 67.9°              | +1.6             | Mar 1956         |
| Brooksville Area        | 34th Warmest (tie) | 67.8°                  | 64.2°              | +3.6°            | Jan 1892         |
| Inverness 3 SE          | 17th Warmest       | 67.0                   | 63.1               | +3.9°            | Jul 1948         |
| Chiefland 5 ESE         | 14th Warmest (tie) | 65.4°                  | 63.0°              | +2.4°            | Jun 1956         |

Temperature (F)  
3/1/2022 - 3/31/2022



Departure from Normal Temperature (F)  
3/1/2022 - 3/31/2022

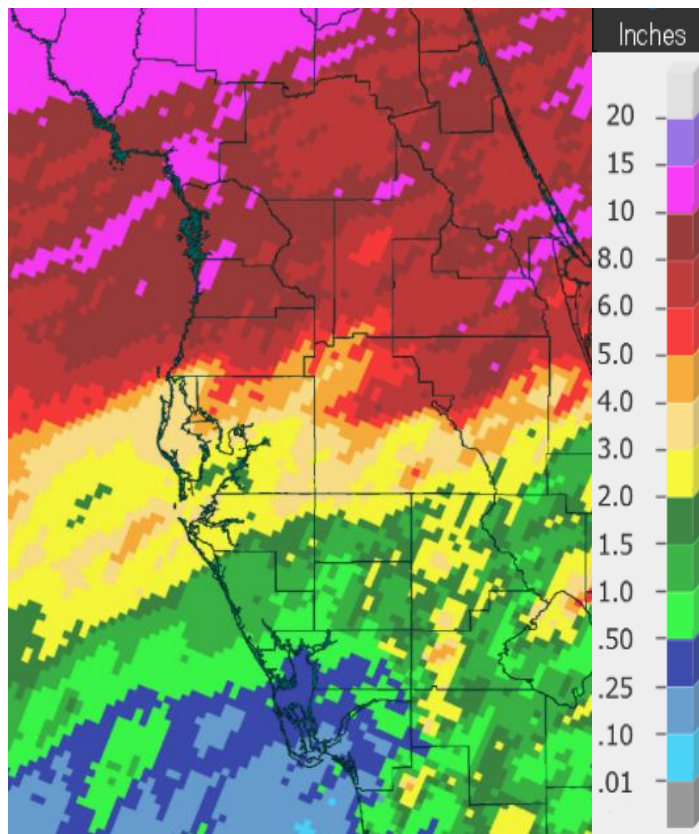


Graphics Source: NOAA Regional Climate Centers

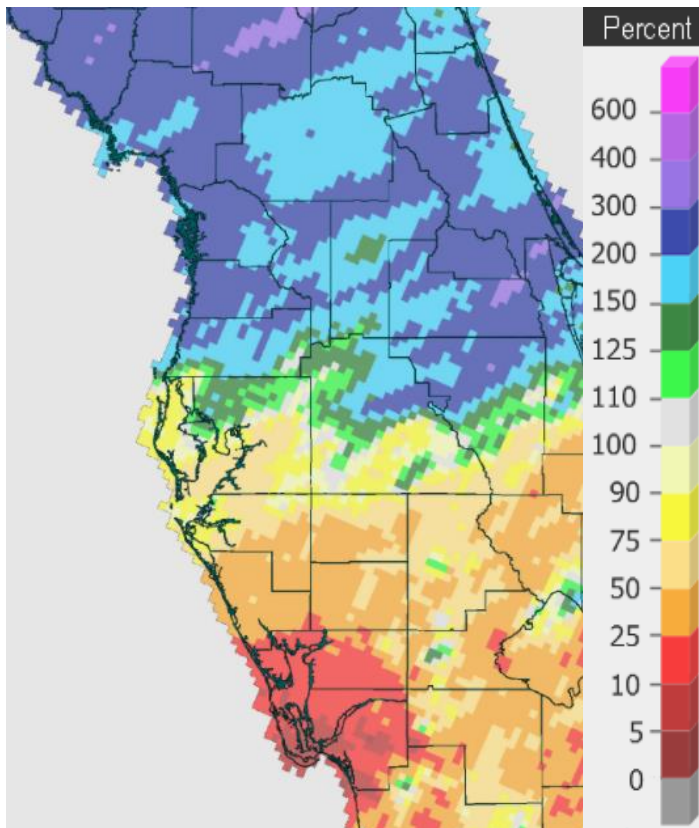
As for rainfall we did have a few cold fronts move across the region bringing showers and thunderstorms to the area this past month with some decent amounts across the Nature Coast, where amounts were 150% to 250% of normal. The other extreme was across southwest Florida where we saw less than 25% of normal rainfall during March. The high rainfall total at Chiefland 5 ESE did place them in the Top Ten Wettest, otherwise no other locations were in the Top Ten Wettest or Driest for March.

**MARCH RAINFALL (inches):**

| Location                | Rank              | March 2022<br>Rain Total | Normal<br>Apr Rain | Dep fm<br>Normal | Records<br>Began |
|-------------------------|-------------------|--------------------------|--------------------|------------------|------------------|
| Chiefland 5 ESE         | 3rd Wettest       | 9.20                     | 3.81               | +5.39            | Jul 1956         |
| Inverness 3 SE          | 16th Wettest      | 6.28                     | 3.29               | +2.99            | Jul 1948         |
| St. Leo                 | 39th Wettest      | 4.36                     | 3.18               | +1.18            | Apr 1895         |
| Bartow                  | 42nd Wettest      | 4.04                     | 2.84               | +1.20            | Jun 1892         |
| Winter Haven Area       | 29th Wettest      | 3.67                     | 3.04               | +0.63            | Mar 1941         |
| Lakeland Area           | 56th Driest       | 3.05                     | 3.06               | -0.01            | Jan 1915         |
| Tampa Area              | 49th Wettest      | 2.91                     | 2.52               | +0.39            | Apr 1890         |
| Sarasota-Bradenton Area | 60th Driest       | 2.51                     | 2.85               | -0.34            | Jan 1911         |
| Tarpon Springs          | 65th Driest       | 2.35                     | 3.08               | -0.73            | Jan 1892         |
| Venice                  | 33rd Driest       | 2.34                     | 2.97               | -0.63            | May 1955         |
| Plant City              | 52nd Driest (tie) | 2.20                     | 2.78               | -0.58            | Jan 1893         |
| Wauchula 2 N            | 38th Driest       | 1.92                     | 2.99               | -1.07            | Jan 1933         |
| St. Petersburg Area     | 41st Driest       | 1.63                     | 2.58               | -0.95            | Aug 1914         |
| Archbold Bio Stn        | 19th Driest       | 1.43                     | 2.87               | -1.44            | Jan 1969         |
| Myakka River State Park | 24th Driest       | 1.20                     | 3.00               | -1.80            | Sep 1943         |
| Punta Gorda Area        | 21st Driest       | 0.61                     | 2.28               | -1.67            | May 1914         |
| Fort Myers Area         | 23rd Driest (tie) | 0.43                     | 2.07               | -1.64            | Jan 1902         |



Rainfall March 2022



Percent of Normal

On the following pages are tables of the Top Ten Warmest, Coolest, Wettest, and Driest Marches at some official NWS locations, which include the average/total for this March where available, and the 1991-2020 Normal (average) temperature and rainfall for the month of March.

**CHIEFLAND 5 SE** (Records began in July 1956):

| Warmest Marches        | Coollest Marches | Wettest Marches       | Driest Marches  |
|------------------------|------------------|-----------------------|-----------------|
| 1 69.6 in 1997         | 1 55.5 in 1969   | 1 14.88 in 1959       | 1 0.06 in 2006  |
| 2 69.5 in 2020         | 2 56.1 in 2010   | 2 12.96 in 1996       | 2 0.15 in 2020  |
| 3 69.2 in 2015         | 3 57.3 in 2013   | <b>3 9.20 in 2022</b> | 3 0.63 in 2017  |
| 4 68.7 in 2012         | 4 57.8 in 1996   | 4 9.06 in 2014        | 4 0.69 in 2013  |
| 5 67.6 in 1973         | 5 59.7 in 1971   | 5 8.90 in 1960        | 5 0.71 in 1976  |
| 6 67.5 in 2003         | 6 59.8 in 2005   | 6 8.86 in 1978        | 6 0.74 in 2019  |
| 7 67.2 in 1977         | 7 60.0 in 1962   | 7 8.80 in 1973        | 7 0.95 in 2007  |
| 8 66.3 in 1976         | 8 60.7 in 1981   | 8 8.53 in 1991        | 8 0.99 in 1967  |
| 9 66.0 in 1982         | 9 60.8 in 1966   | 9 8.33 in 1983        | 9 1.26 in 2004  |
| 66.0 in 1974           | 10 60.9 in 2014  | 10 8.07 in 1992       | 10 1.27 in 1979 |
| 11 65.9 in 1961        |                  |                       |                 |
| 12 65.8 in 1990        |                  |                       |                 |
| 13 65.5 in 1989        |                  |                       |                 |
| <b>14 65.4 in 2022</b> |                  |                       |                 |
| 65.4 in 1980           |                  |                       |                 |

Normal Temperature for March at CHIF1 = 63.0°  
 Normal Rainfall for March at CHIF1 = 3.81 inches

**INVERNESS 3 SE** (Records began in July 1948):

| Warmest Marches        | Coollest Marches | Wettest Marches        | Driest Marches  |
|------------------------|------------------|------------------------|-----------------|
| 1 70.9 in 1997         | 1 57.9 in 1996   | 1 16.00 in 1960        | 1 0.00 in 1956  |
| 2 70.7 in 2020         | 2 58.8 in 1969   | 2 11.13 in 1987        | 2 Trace in 2020 |
| 3 70.0 in 1953         | 3 59.5 in 2005   | 3 9.21 in 1959         | 3 0.01 in 2006  |
| 4 69.7 in 2012         | 4 60.1 in 1999   | 4 9.00 in 2010         | 4 0.17 in 2019  |
| 69.7 in 1976           | 5 60.4 in 1960   | 5 8.83 in 1982         | 5 0.56 in 2012  |
| 6 69.2 in 1974         | 6 60.6 in 2018   | 6 8.63 in 2001         | 6 0.65 in 2013  |
| 69.2 in 1961           | 7 61.2 in 1993   | 7 8.18 in 1964         | 7 0.66 in 1967  |
| 8 69.0 in 2015         | 8 61.8 in 1981   | 8 8.05 in 1958         | 8 0.77 in 1964  |
| 9 68.8 in 1963         | 9 61.9 in 1988   | 9 8.00 in 1996         | 9 0.80 in 1949  |
| 10 68.4 in 1973        | 61.9 in 1978     | 10 7.96 in 1983        | 10 0.83 in 1966 |
| ...                    |                  | ...                    |                 |
| <b>17 67.0 in 2022</b> |                  | <b>16 6.28 in 2022</b> |                 |

Normal Temperature for March at INV1 = 63.1  
 Normal Rainfall for March at INV1 = 3.29 inches

**BROOKSVILLE AREA** (Records began in January 1892):

| Warmest Marches        | Coollest Marches       | Wettest Marches | Driest Marches  |
|------------------------|------------------------|-----------------|-----------------|
| 1 73.0 in 1945         | 1 56.9 in 2010         | 1 17.70 in 1960 | 1 Trace in 1956 |
| 2 71.7 in 1935         | 2 57.4 in 1915         | 2 13.40 in 1987 | 2 0.02 in 2020  |
| 3 71.6 in 1938         | 3 57.7 in 2013         | 3 10.69 in 1959 | 3 0.04 in 2006  |
| 4 71.5 in 2020         | 4 59.3 in 1969         | 4 10.58 in 1924 | 4 0.07 in 2017  |
| 5 71.3 in 1974         | 5 59.6 in 1931         | 5 9.10 in 1930  | 5 0.10 in 1908  |
| 6 71.0 in 1929         | 6 60.1 in 1901         | 6 9.00 in 1983  | 6 0.15 in 1898  |
| 7 70.9 in 1948         | 7 60.2 in 1999         | 7 8.29 in 2011  | 7 0.16 in 1916  |
| 70.9 in 1908           | 8 60.3 in 1924         | 8 8.00 in 1991  | 8 0.17 in 2019  |
| 70.9 in 1897           | 9 60.7 in 2018         | 9 7.97 in 1958  | 0.17 in 1945    |
| 10 70.6 in 1939        | 60.7 in 1926           | 10 7.77 in 1982 | 10 0.20 in 1904 |
| ...                    |                        |                 |                 |
| <b>34 67.8 in 2022</b> | <b>83 67.8 in 2022</b> |                 |                 |
| 67.8 in 1985           | 67.8 in 1985           |                 |                 |

Normal Temperature for March at BKV = 64.2°

Total Rainfall for March 2022 = Not Available, Several Days Missing

Normal Rainfall for March at BKV = 2.66 inches

-----

**ST LEO** (Records began in April 1895):

| Warmest Marches        | Coollest Marches | Wettest Marches        | Driest Marches         |
|------------------------|------------------|------------------------|------------------------|
| 1 72.9 in 1907         | 1 57.5 in 1931   | 1 17.91 in 1960        | 1 0.00 in 2020         |
| 2 72.8 in 1945         | 57.5 in 1915     | 2 16.50 in 1987        | 2 Trace in 1907        |
| 72.8 in 1897           | 3 59.2 in 1969   | 3 12.47 in 2011        | 3 0.01 in 1895         |
| 4 72.7 in 1997         | 4 60.0 in 2013   | 4 12.05 in 1959        | 4 0.02 in 2006         |
| 5 72.4 in 1948         | 5 60.2 in 2010   | 5 10.91 in 1924        | 5 0.10 in 1908         |
| 6 72.3 in 2020         | 6 60.6 in 1930   | 6 10.05 in 1900        | 6 0.19 in 1904         |
| 7 71.8 in 2003         | 7 61.1 in 1960   | 7 9.53 in 1930         | 7 0.30 in 1949         |
| 8 71.6 in 1938         | 8 61.5 in 1914   | 8 9.31 in 1958         | 8 0.33 in 1956         |
| 9 71.0 in 1974         | 9 61.6 in 1924   | 9 8.74 in 1983         | 9 0.38 in 1917         |
| 10 70.9 in 2012        | 10 61.9 in 1941  | 10 8.70 in 1988        | 10 0.47 in 1898        |
| ...                    |                  | ...                    | ...                    |
| <b>21 70.2 in 2022</b> |                  | <b>39 4.36 in 2022</b> | <b>90 4.36 in 2022</b> |

Normal Temperature for March at STLF1 = 66.4°

Normal Rainfall for March at STLF1 = 3.18 inches

**TARPON SPRINGS** (Records began in January 1892):

| Warmest Marches        | Coollest Marches | Wettest Marches        | Driest Marches         |
|------------------------|------------------|------------------------|------------------------|
| 1 74.6 in 1997         | 1 57.5 in 1915   | 1 14.21 in 1987        | 1 0.00 in 2020         |
| 2 73.2 in 1948         | 2 58.3 in 1969   | 2 13.72 in 1960        | 0.00 in 1907           |
| 3 73.0 in 2020         | 3 59.1 in 1960   | 3 12.56 in 1959        | 3 0.02 in 2006         |
| 73.0 in 1945           | 4 59.4 in 2013   | 4 11.29 in 2011        | 4 0.04 in 1908         |
| 5 71.8 in 2012         | 5 59.7 in 1931   | 5 9.68 in 1983         | 5 0.11 in 1949         |
| 71.8 in 1903           | 6 60.0 in 2010   | 6 8.41 in 1930         | 6 0.26 in 1898         |
| 71.8 in 1897           | 7 61.3 in 1941   | 7 8.18 in 1900         | 7 0.34 in 1956         |
| 8 71.6 in 1921         | 8 61.5 in 1968   | 8 8.12 in 1996         | 8 0.47 in 1945         |
| 9 71.3 in 1938         | 9 61.6 in 1914   | 9 7.31 in 1947         | 9 0.53 in 1935         |
| 71.3 in 1929           | 10 61.7 in 1892  | 10 7.22 in 2014        | 10 0.59 in 2017        |
| ...                    |                  | ...                    | ...                    |
| <b>18 69.9 in 2022</b> |                  | <b>66 2.35 in 2022</b> | <b>65 2.35 in 2022</b> |
| 69.9 in 2016           |                  |                        |                        |
| 69.9 in 1977           |                  |                        |                        |

Normal Temperature for March at TRPF1 = 66.8°

Normal Rainfall for March at TRPF1 = 3.08 inches

---

**TAMPA AREA** (Records began in April 1890):

| Warmest Marches       | Coollest Marches | Wettest Marches        | Driest Marches         |
|-----------------------|------------------|------------------------|------------------------|
| 1 74.4 in 2012        | 1 57.7 in 1915   | 1 12.64 in 1959        | 1 Trace in 2020        |
| 2 74.3 in 2020        | 2 58.1 in 1969   | 2 12.01 in 1987        | Trace in 2006          |
| <b>3 73.9 in 2022</b> | 3 60.7 in 1931   | 3 11.00 in 1960        | Trace in 1907          |
| 73.9 in 1997          | 4 60.9 in 1968   | 4 9.87 in 1930         | 4 0.06 in 1956         |
| 5 73.2 in 1945        | 5 61.6 in 2013   | 5 9.79 in 2011         | 5 0.08 in 1908         |
| 6 73.0 in 2015        | 61.6 in 2010     | 6 7.59 in 1983         | 0.08 in 1898           |
| 7 72.6 in 1921        | 7 61.7 in 1941   | 7 7.36 in 1900         | 7 0.20 in 1945         |
| 8 72.2 in 1907        | 8 61.9 in 1947   | 8 7.24 in 1924         | 8 0.22 in 1949         |
| 9 71.9 in 1897        | 9 62.0 in 1960   | 9 7.07 in 1931         | 9 0.35 in 2018         |
| 10 71.8 in 1948       | 62.0 in 1924     | 10 6.98 in 1957        | 10 0.41 in 2000        |
| 71.8 in 1938          | 62.0 in 1892     | 6.98 in 1947           |                        |
| 71.8 in 1918          |                  | ...                    | ...                    |
|                       |                  | <b>49 2.91 in 2022</b> | <b>84 2.91 in 2022</b> |

Normal Temperature for March at TPA = 68.6°

Normal Rainfall for March at TPA = 2.52 inches



**ST PETERSBURG AREA** (Records began in August 1914):

| Warmest Marches        | Coollest Marches | Wettest Marches        | Driest Marches         |
|------------------------|------------------|------------------------|------------------------|
| 1 74.6 in 2012         | 1 59.0 in 1915   | 1 11.79 in 1987        | 1 0.00 in 2020         |
| 2 74.5 in 2020         | 2 61.7 in 2010   | 2 11.33 in 1959        | 2 0.03 in 1956         |
| 74.5 in 1945           | 3 61.9 in 1969   | 3 8.38 in 1931         | 3 0.09 in 2006         |
| 4 73.9 in 1948         | 4 62.4 in 1996   | 4 8.20 in 1983         | 0.09 in 1939           |
| 5 73.3 in 1997         | 5 62.5 in 1931   | 5 8.14 in 2010         | 5 0.19 in 1917         |
| 6 73.2 in 1921         | 6 63.1 in 1960   | 6 7.86 in 1970         | 6 0.24 in 1916         |
| 7 73.0 in 2015         | 7 63.3 in 2013   | 7 7.75 in 1960         | 7 0.31 in 2002         |
| 8 72.8 in 1976         | 8 63.4 in 1947   | 8 7.65 in 1952         | 0.31 in 1949           |
| 9 72.7 in 1918         | 63.4 in 1924     | 9 7.30 in 2011         | 9 0.37 in 1945         |
| 10 72.6 in 2003        | 10 63.5 in 1941  | 10 7.21 in 2001        | 10 0.40 in 2012        |
| <b>11 72.4 in 2022</b> |                  | ...                    | ...                    |
| 72.4 in 1938           |                  | <b>69 1.63 in 2022</b> | <b>41 1.63 in 2022</b> |

Normal Temperature for March at SPG = 69.0°

Normal Rainfall for March at SPG = 2.58 inches

-----

**PLANT CITY** (Records began in September 1892):

| Warmest Marches       | Coollest Marches | Wettest Marches        | Driest Marches         |
|-----------------------|------------------|------------------------|------------------------|
| 1 74.3 in 2020        | 1 56.9 in 1931   | 1 15.68 in 1960        | 1 0.00 in 1908         |
| 2 73.2 in 1907        | 2 59.1 in 1915   | 2 13.70 in 1959        | 0.00 in 1907           |
| 3 73.1 in 1997        | 3 60.3 in 1932   | 3 12.78 in 1987        | 3 0.01 in 2006         |
| 4 72.6 in 2015        | 4 60.5 in 1969   | 4 10.59 in 1983        | 4 0.02 in 2020         |
| <b>5 72.4 in 2022</b> | 5 60.6 in 2010   | 5 8.81 in 1930         | 5 0.08 in 1999         |
| 72.4 in 2016          | 6 61.0 in 1930   | 6 7.93 in 2010         | 6 0.21 in 1945         |
| 7 72.2 in 1948        | 61.0 in 1901     | 7 7.81 in 1924         | 7 0.32 in 1916         |
| 72.2 in 1945          | 8 61.3 in 2013   | 8 7.51 in 1998         | 8 0.39 in 1975         |
| 9 71.8 in 2012        | 9 61.4 in 1924   | 9 7.49 in 2011         | 9 0.40 in 2017         |
| 71.8 in 1903          | 10 61.5 in 1941  | 7.49 in 2001           | 10 0.46 in 2002        |
|                       |                  | ...                    | ...                    |
|                       |                  | <b>72 2.20 in 2022</b> | <b>52 2.20 in 2022</b> |
|                       |                  | 2.20 in 2013           | 2.20 in 2013           |
|                       |                  | 2.20 in 1984           | 2.20 in 1984           |

Normal Temperature for March at PLCF1 = 68.7°

Normal Rainfall for March at PLCF1 = 2.78 inches



**LAKELAND AREA** (Records began in January 1915):

| Warmest Marches        | Coollest Marches | Wettest Marches        | Driest Marches         |
|------------------------|------------------|------------------------|------------------------|
| 1 73.5 in 2020         | 1 60.0 in 1969   | 1 12.94 in 1960        | 1 0.00 in 2020         |
| 73.5 in 1921           | 2 60.1 in 1915   | 2 12.16 in 1959        | 2 0.22 in 2006         |
| 3 73.4 in 1918         | 3 61.5 in 2010   | 3 10.75 in 1987        | 0.22 in 1916           |
| 4 72.8 in 1997         | 61.5 in 1960     | 4 9.22 in 1983         | 4 0.26 in 2021         |
| 72.8 in 1945           | 61.5 in 1931     | 5 8.57 in 1930         | 5 0.53 in 1925         |
| 6 72.7 in 1935         | 6 61.6 in 2013   | 6 8.53 in 2010         | 6 0.57 in 2009         |
| 7 72.6 in 1938         | 61.6 in 1941     | 7 8.15 in 1942         | 7 0.63 in 2000         |
| 8 72.1 in 2012         | 8 61.9 in 1924   | 8 7.44 in 2001         | 8 0.67 in 2007         |
| 72.1 in 2003           | 9 62.2 in 1947   | 9 7.20 in 1998         | 9 0.68 in 2002         |
| <b>10 72.0 in 2022</b> | 10 62.5 in 1968  | 10 6.90 in 1982        | 10 0.69 in 2017        |
| 72.0 in 2016           |                  | ...                    | ...                    |
| 72.0 in 2015           |                  | <b>53 3.05 in 2022</b> | <b>56 3.05 in 2022</b> |

Normal Temperature for March at LLDF1 = 68.3°

Normal Rainfall for March at LLDF1 = 3.06 inches

-----

**WINTER HAVEN AREA** (Records began in January 1941):

| Warmest Marches       | Coollest Marches | Wettest Marches        | Driest Marches         |
|-----------------------|------------------|------------------------|------------------------|
| 1 74.6 in 2020        | 1 58.4 in 1969   | 1 12.18 in 1960        | 1 0.14 in 2020         |
| 2 73.5 in 2015        | 2 61.5 in 2013   | 2 10.97 in 1959        | 2 0.30 in 1956         |
| 73.5 in 1945          | 3 61.6 in 2010   | 3 9.61 in 1987         | 3 0.38 in 2006         |
| 4 73.4 in 1997        | 4 62.2 in 1960   | 4 8.31 in 2011         | 4 0.41 in 2021         |
| 73.4 in 1948          | 5 62.5 in 1968   | 5 7.56 in 2010         | 5 0.48 in 2002         |
| 6 72.8 in 2012        | 6 62.9 in 1981   | 6 7.19 in 1998         | 6 0.57 in 1945         |
| <b>7 72.5 in 2022</b> | 62.9 in 1941     | 7 7.16 in 1970         | 7 0.58 in 2018         |
| 72.5 in 2003          | 8 63.5 in 1996   | 8 6.93 in 1983         | 0.58 in 2017           |
| 9 72.0 in 1977        | 9 63.6 in 1983   | 9 6.60 in 1942         | 9 0.60 in 2000         |
| 10 71.9 in 1989       | 10 64.0 in 1947  | 10 6.55 in 1969        | 10 0.61 in 2007        |
|                       |                  | ...                    | ...                    |
|                       |                  | <b>29 3.67 in 2022</b> | <b>51 3.67 in 2022</b> |

Normal Temperature for March at GIF = 69.1°

Normal Rainfall for March at GIF = 3.04 inches

**BARTOW** (Records began in June 1892):

| Warmest Marches        | Coollest Marches | Wettest Marches        | Driest Marches         |
|------------------------|------------------|------------------------|------------------------|
| 1 76.1 in 2015         | 1 60.8 in 1914   | 1 11.53 in 1959        | 1 0.00 in 2020         |
| 2 74.6 in 1903         | 2 61.5 in 1969   | 2 10.25 in 1987        | 2 0.02 in 1908         |
| 3 74.0 in 1997         | 3 62.3 in 2010   | 3 8.99 in 1960         | 3 0.05 in 1945         |
| 4 73.3 in 2003         | 4 62.5 in 1901   | 4 8.57 in 1944         | 4 0.10 in 2006         |
| 5 73.2 in 1948         | 5 62.7 in 1947   | 5 8.12 in 2001         | 5 0.27 in 2021         |
| 6 72.6 in 2012         | 6 62.9 in 1960   | 6 8.10 in 1947         | 6 0.36 in 2002         |
| 7 72.5 in 1945         | 7 63.5 in 1996   | 7 7.72 in 1930         | 7 0.41 in 1999         |
| 72.5 in 1907           | 63.5 in 1968     | 8 7.28 in 2010         | 8 0.45 in 2007         |
| 72.5 in 1897           | 9 63.9 in 2018   | 9 7.11 in 1970         | 9 0.46 in 1897         |
| 10 72.3 in 2020        | 10 64.0 in 1983  | 10 7.00 in 1983        | 10 0.47 in 1967        |
| ...                    |                  | ...                    | ...                    |
| <b>17 70.8 in 2022</b> |                  | <b>42 4.04 in 2022</b> | <b>89 4.04 in 2022</b> |
| 70.8 in 2016           |                  |                        |                        |
| 70.8 in 2002           |                  |                        |                        |

Normal Temperature for March at BARF1 = 67.7°

Normal Rainfall for March at BARF1 = 2.84 inches

-----

**SARASOTA-BRADENTON AREA** (Records began in January 1911):

| Warmest Marches       | Coollest Marches | Wettest Marches        | Driest Marches         |
|-----------------------|------------------|------------------------|------------------------|
| 1 73.1 in 2020        | 1 57.0 in 1915   | 1 11.10 in 1987        | 1 Trace in 1939        |
| 2 73.0 in 2012        | 2 59.3 in 1931   | 2 10.77 in 2001        | 2 0.10 in 1945         |
| 3 72.6 in 1997        | 3 60.4 in 2010   | 3 10.60 in 1958        | 3 0.21 in 1949         |
| 4 71.9 in 2003        | 4 60.7 in 1969   | 4 8.81 in 1959         | 4 0.26 in 1956         |
| 71.9 in 1948          | 5 60.8 in 2013   | 5 8.63 in 1983         | 5 0.28 in 2007         |
| <b>6 71.7 in 2022</b> | 6 61.7 in 1924   | 6 8.49 in 2011         | 6 0.34 in 1935         |
| 7 71.5 in 2015        | 61.7 in 1914     | 7 8.16 in 1998         | 7 0.37 in 1976         |
| 8 71.1 in 1921        | 8 62.0 in 1941   | 8 7.42 in 1982         | 8 0.44 in 1917         |
| 9 70.9 in 2016        | 62.0 in 1916     | 9 7.37 in 1969         | 9 0.47 in 2004         |
| 10 70.8 in 1945       | 10 62.6 in 1968  | 10 7.10 in 1970        | 10 0.48 in 2017        |
|                       |                  | ...                    | ...                    |
|                       |                  | <b>52 2.51 in 2022</b> | <b>60 2.51 in 2022</b> |

Normal Temperature for March at SRQ = 68.1°

Normal Rainfall for March at SRQ = 2.85 inches

**VENICE** (Records began in April 1955):

| Warmest Marches       | Coollest Marches | Wettest Marches        | Driest Marches         |
|-----------------------|------------------|------------------------|------------------------|
| 1 74.4 in 1997        | 1 61.6 in 1969   | 1 11.21 in 1987        | 1 0.00 in 2020         |
| 2 74.0 in 2012        | 2 62.8 in 2013   | 2 9.57 in 1983         | 2 0.10 in 1956         |
| 3 73.8 in 2003        | 3 62.9 in 1960   | 3 9.38 in 1998         | 3 0.14 in 2009         |
| 4 72.2 in 2015        | 4 63.2 in 1968   | 4 8.83 in 2010         | 4 0.19 in 1971         |
| <b>5 72.1 in 2022</b> | 5 63.3 in 1962   | 5 8.05 in 1970         | 5 0.33 in 1977         |
| 6 71.7 in 2020        | 6 63.4 in 2010   | 6 7.74 in 1959         | 6 0.36 in 2006         |
| 7 70.8 in 2016        | 63.4 in 1981     | 7 7.45 in 2011         | 7 0.39 in 1967         |
| 70.8 in 2000          | 8 63.9 in 1978   | 8 7.41 in 2001         | 8 0.40 in 1974         |
| 9 70.7 in 1989        | 9 64.3 in 1996   | 9 7.10 in 1969         | 9 0.53 in 2004         |
| 10 70.1 in 2011       | 64.3 in 1988     | 10 6.60 in 1958        | 10 0.54 in 2002        |
| 70.1 in 2002          | 64.3 in 1958     | ...                    | ...                    |
|                       |                  | <b>35 2.34 in 2022</b> | <b>33 2.34 in 2022</b> |

Normal Temperature for March at VNCF1 = 67.7°

Normal Rainfall for March at VNCF1 = 2.97 inches

-----

**MYAKKA RIVER STATE PARK** (Temperature records began in March 1956  
and Rainfall records began in Sep 1943):

| Warmest Marches        | Coollest Marches | Wettest Marches        | Driest Marches         |
|------------------------|------------------|------------------------|------------------------|
| 1 74.5 in 2003         | 1 60.5 in 2013   | 1 12.88 in 1987        | 1 0.08 in 1956         |
| 2 74.2 in 1997         | 2 61.4 in 2010   | 2 12.24 in 1998        | 2 0.13 in 2006         |
| 3 72.6 in 2015         | 3 62.4 in 1960   | 3 9.74 in 1969         | 3 0.16 in 1945         |
| 4 71.9 in 2012         | 4 63.7 in 1971   | 4 8.80 in 1959         | 4 0.23 in 2020         |
| 5 71.6 in 1977         | 5 64.4 in 1996   | 5 8.21 in 1958         | 0.23 in 1966           |
| 6 71.3 in 2016         | 64.4 in 1959     | 6 7.81 in 1983         | 6 0.29 in 2002         |
| 71.3 in 1976           | 7 64.8 in 1958   | 7 7.54 in 2010         | 0.29 in 1977           |
| 8 71.2 in 1992         | 8 65.2 in 1981   | 8 7.51 in 2011         | 8 0.41 in 1953         |
| 9 71.0 in 1982         | 9 65.4 in 2018   | 9 7.35 in 2001         | 9 0.42 in 1949         |
| 10 70.5 in 1995        | 10 65.7 in 1962  | 10 7.04 in 1947        | 10 0.47 in 1974        |
| ...                    | 65.7 in 1957     | ...                    | ...                    |
| <b>21 69.3 in 2022</b> |                  | <b>55 1.20 in 2022</b> | <b>24 1.20 in 2022</b> |

Normal Temperature for March at MKCF1 = 67.9°

Normal Rainfall for March at MKCF1 = 3.00 inches

**WAUCHULA 2 N** (Records began in January 1933):

| Warmest Marches        | Coollest Marches | Wettest Marches        | Driest Marches         |
|------------------------|------------------|------------------------|------------------------|
| 1 72.9 in 1948         | 1 57.7 in 2013   | 1 12.14 in 1998        | 1 0.00 in 2020         |
| 2 72.6 in 2003         | 2 61.3 in 1969   | 2 9.22 in 1959         | 0.00 in 2002           |
| 3 72.0 in 1974         | 3 62.3 in 2018   | 3 7.72 in 1958         | 3 0.08 in 1967         |
| 72.0 in 1945           | 4 62.5 in 1996   | 4 7.03 in 1987         | 4 0.18 in 1945         |
| 5 71.7 in 1938         | 5 62.7 in 1960   | 5 6.98 in 2001         | 5 0.20 in 1935         |
| 6 71.6 in 1939         | 6 63.4 in 1947   | 6 6.85 in 1965         | 6 0.22 in 2012         |
| 7 71.5 in 1935         | 7 63.5 in 1999   | 7 6.76 in 1947         | 7 0.30 in 2006         |
| 8 71.2 in 1977         | 63.5 in 1968     | 8 6.55 in 1983         | 0.30 in 1974           |
| 9 70.9 in 1997         | 9 63.6 in 1941   | 9 6.53 in 1969         | 9 0.35 in 1976         |
| 70.9 in 1973           | 10 63.7 in 1983  | 10 5.80 in 1970        | 10 0.48 in 2021        |
| ...                    |                  | ...                    | ...                    |
| <b>18 69.7 in 2022</b> |                  | <b>50 1.92 in 2022</b> | <b>38 1.92 in 2022</b> |
| 69.7 in 1963           |                  |                        |                        |

Normal Temperature for March at WAUF1 = 66.2°  
Normal Rainfall for March at WAUF1 = 2.99 inches

-----

**ARCHBOLD BIO STN** (Records began in January 1969):

| Warmest Marches       | Coollest Marches | Wettest Marches | Driest Marches         |
|-----------------------|------------------|-----------------|------------------------|
| 1 73.1 in 2003        | 1 58.6 in 2010   | 1 10.20 in 2010 | 1 0.05 in 2020         |
| 2 72.6 in 1997        | 2 58.8 in 2013   | 2 8.85 in 1970  | 0.05 in 1974           |
| 3 72.3 in 2015        | 3 61.1 in 1969   | 3 7.52 in 2003  | 3 0.06 in 2002         |
| <b>4 70.8 in 2022</b> | 4 62.2 in 1996   | 4 7.43 in 1969  | 4 0.22 in 2007         |
| 5 70.6 in 2016        | 62.2 in 1983     | 5 6.61 in 1987  | 5 0.66 in 2007         |
| 70.6 in 1977          | 6 62.9 in 2018   | 6 6.52 in 1982  | 6 0.76 in 1999         |
| 70.6 in 1974          | 7 63.2 in 1999   | 7 6.42 in 1984  | 7 0.78 in 1972         |
| 8 70.2 in 2012        | 8 63.3 in 1981   | 8 6.21 in 1988  | 8 0.83 in 2021         |
| 9 70.0 in 2020        | 9 63.8 in 1998   | 9 6.03 in 1986  | 9 0.87 in 2006         |
| 10 70.0 in 1976       | 10 63.9 in 1971  | 10 5.74 in 1993 | 10 0.91 in 2009        |
|                       |                  |                 | ...                    |
|                       |                  |                 | <b>19 1.43 in 2022</b> |

Normal Temperature for March at ACHF1 = 67.1°  
Normal Rainfall for March at ACHF1 = 2.87 inches

**PUNTA GORDA AREA** (Records began in May 1914):

| Warmest Marches        | Coollest Marches | Wettest Marches | Driest Marches         |
|------------------------|------------------|-----------------|------------------------|
| 1 74.9 in 1948         | 1 57.9 in 1915   | 1 9.91 in 1947  | 1 0.00 in 1956         |
| 2 74.8 in 1945         | 2 62.0 in 2010   | 2 9.26 in 1970  | 2 Trace in 2020        |
| 3 73.7 in 1997         | 3 62.1 in 1916   | 3 8.71 in 2010  | Trace in 1920          |
| 4 73.0 in 1953         | 4 62.3 in 1969   | 4 8.18 in 1987  | 4 0.09 in 2007         |
| 5 72.9 in 2003         | 62.3 in 1931     | 5 7.64 in 1930  | 5 0.10 in 1945         |
| 6 72.4 in 2015         | 6 62.4 in 2013   | 6 7.23 in 1960  | 0.10 in 1935           |
| 7 72.3 in 1944         | 7 63.5 in 1941   | 7 6.43 in 1958  | 7 0.15 in 1967         |
| 72.3 in 1968           | 8 64.2 in 1968   | 8 6.34 in 1969  | 8 0.16 in 1938         |
| 9 72.2 in 1961         | 9 64.3 in 1924   | 9 6.14 in 1983  | 9 0.21 in 1923         |
| 72.2 in 1929           | 10 64.7 in 1971  | 10 5.84 in 1959 | 10 0.28 in 2006        |
| <b>11 72.1 in 2022</b> |                  |                 | ...                    |
| 72.1 in 1974           |                  |                 | <b>21 0.61 in 2022</b> |

Normal Temperature for March at PGD = 68.5°

Normal Rainfall for March at PGD = 2.28 inches

-----

**FORT MYERS AREA** (Records began in January 1902):

| Warmest Marches       | Coollest Marches | Wettest Marches | Driest Marches         |
|-----------------------|------------------|-----------------|------------------------|
| 1 75.9 in 1997        | 1 61.1 in 1915   | 1 18.58 in 1970 | 1 0.00 in 1935         |
| <b>2 75.8 in 2022</b> | 2 62.4 in 1931   | 2 10.31 in 1958 | 2 0.02 in 2020         |
| 3 75.4 in 2020        | 3 63.0 in 2010   | 3 8.94 in 1947  | 3 0.03 in 1974         |
| 4 74.8 in 2003        | 4 63.4 in 1969   | 4 7.78 in 1903  | 4 0.04 in 1939         |
| 5 74.6 in 2015        | 5 63.7 in 1941   | 5 7.41 in 1983  | 5 0.05 in 1956         |
| 6 74.4 in 1948        | 6 64.3 in 2013   | 6 7.21 in 2010  | 6 0.08 in 1907         |
| 7 74.3 in 2012        | 7 64.4 in 1914   | 7 6.88 in 1941  | 7 0.09 in 1977         |
| 8 73.2 in 1921        | 8 64.5 in 1960   | 8 6.64 in 1931  | 8 0.10 in 1945         |
| 9 73.1 in 1929        | 9 64.6 in 1968   | 9 6.59 in 2005  | 9 0.13 in 2007         |
| 10 73.0 in 1982       | 10 65.0 in 1926  | 10 6.38 in 1984 | 10 0.13 in 1949        |
|                       |                  |                 | ...                    |
|                       |                  |                 | <b>23 0.43 in 2022</b> |
|                       |                  |                 | 0.43 in 1979           |

Normal Temperature for March at FMY = 70.3°

Normal Rainfall for March at FMY = 2.07 inches

-----

For more Climate information visit our web site at the following link:  
<https://www.weather.gov/tampabay> and then go to the Climate and Past Weather drop down menu above the graphical forecast images.