



NOAA - National Weather Service

Tampa Bay Area

2525 14th Avenue SE, Ruskin, Florida 33570

813-645-2323 <https://weather.gov/tampabay>

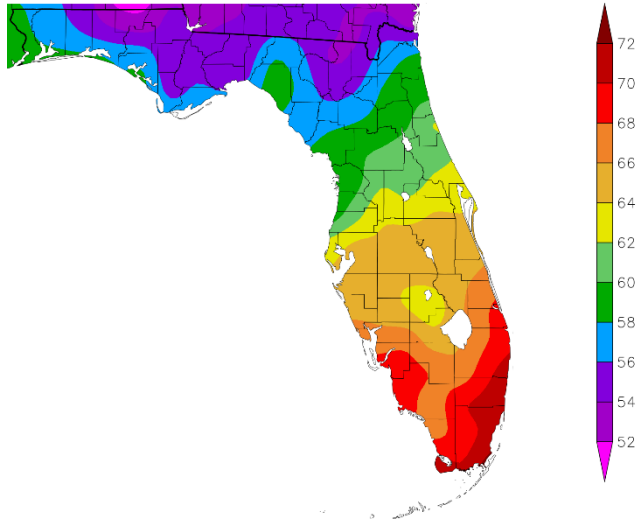
December and 2022 Climate Summary for West Central and Southwest Florida

December 2022 started out warm and dry, then during mid-month the pattern changed with a series of cold fronts moving through preceded and accompanied by showers and thunderstorms. One of these fronts was an arctic cold front which moved through the region shortly before the Christmas holiday weekend setting the area up for one of the Top Three Coldest Christmas Eve/Christmas Days on record. Warmer temperatures slowly returned during the last week with temperatures returning to above normal. Overall, for December, temperatures averaged slightly below to slightly above normal.

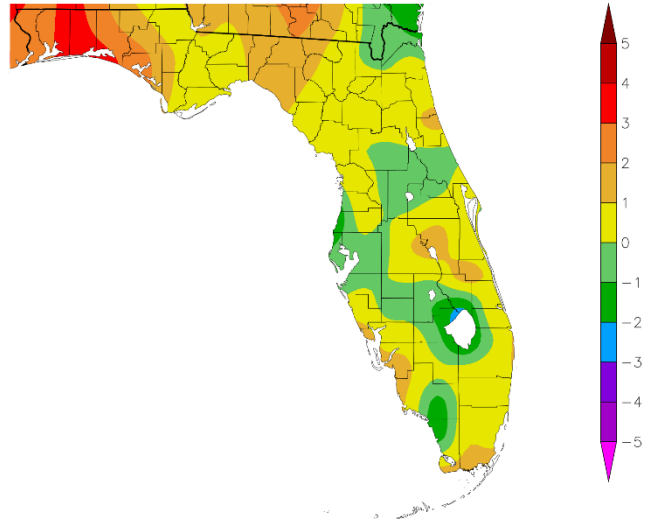
DECEMBER TEMPERATURE (°F) :

Location	December 2022 Rank	Avg Temp	Normal Dec Temp	Dep fm Normal	Records Began
Fort Myers Area	24th Warmest (tie)	68.8°	67.3°	+1.5°	Jan 1902
Venice	24th Warmest	66.1°	64.9°	+1.2°	May 1955
Punta Gorda Area	45th Warmest (tie)	66.0°	65.8°	+0.2°	May 1914
Sarasota-Bradenton Area	65th Coolest (tie)	65.1°	65.2°	-0.1°	Jan 1911
Plant City	83rd Coolest	64.7°	65.0°	-0.3°	Sep 1892
Tampa Area	90th Coolest	64.7°	64.9°	-0.2°	Apr 1890
Archbold Bio Stn	23rd Warmest	64.4°	64.4°	0.0°	Jan 1969
Lakeland Area	59th Coolest (tie)	64.0°	64.8°	-0.8°	Jan 1915
St Petersburg Area	50th Coolest	63.9°	65.1°	-1.2°	Aug 1914
Bartow	35th Warmest	63.8°	63.6°	+0.2°	Jun 1892
Myakka River State Pk	26th Coolest	63.6°	64.8°	-1.2°	Mar 1956
Wauchula 2 N	43rd Warmest (tie)	63.1°	63.0°	+0.1°	Jan 1933
St. Leo	61st Coolest (tie)	61.3°	62.1°	-0.8°	Apr 1895
Brooksville Area	67th Warmest	60.6°	60.3°	+0.3°	Jan 1892
Tarpon Springs	50th Coolest	60.5°	62.4°	-1.9°	Jan 1892
Inverness 3 SE	29th Warmest	60.0°	59.0°	+1.0°	Jul 1948
Chiefland 5 ESE	22nd Warmest	58.8°	57.4°	+1.4°	Jul 1956

Temperature (F)
12/1/2022 - 12/31/2022



Departure from Normal Temperature (F)
12/1/2022 - 12/31/2022



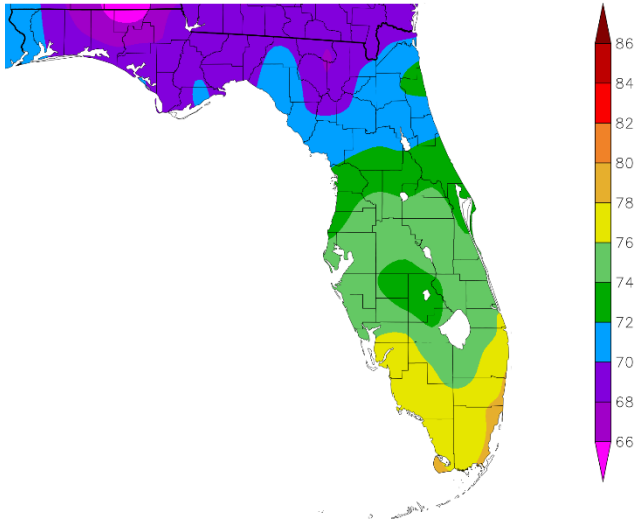
Graphics Source: NOAA Regional Climate Centers

As for 2022, temperatures ended up mostly above normal for the year with many sites in the Top Ten Warmest.

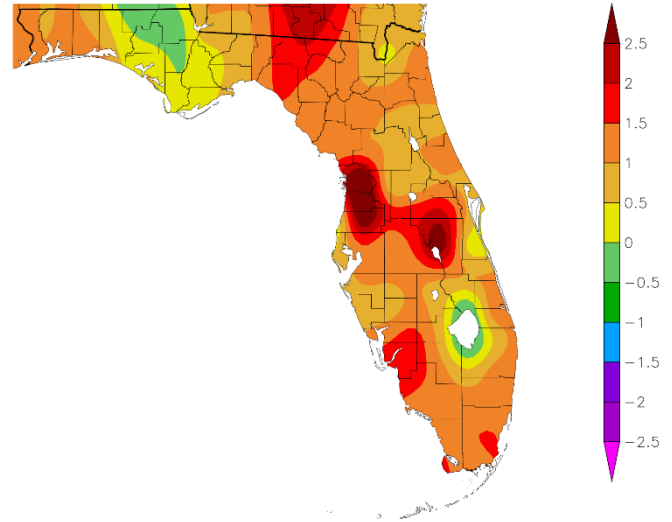
2022 YEARLY AVERAGE TEMPERATURE (°F) :

Location	2022 Rank	Avg Temp	Normal Ann Temp	Dep fm Normal	Records Began
Fort Myers Area	1st Warmest	77.6°	75.4°	+2.2°	Jan 1902
Tampa Area	1st Warmest	76.4°	74.5°	+1.9°	Apr 1890
Plant City	4th Warmest	75.7°	74.3°	+1.4°	Sep 1892
Punta Gorda Area	9th Warmest (tie)	75.4°	74.3°	+1.1°	May 1914
St Petersburg Area	12th Warmest (tie)	75.4°	74.7°	+0.7°	Aug 1914
Lakeland Area	8th Warmest	75.0°	73.9°	+1.1°	Jan 1915
Sarasota-Bradenton Area	7th Warmest	74.7°	74.1°	+0.6°	Jan 1911
Venice	10th Warmest	74.7°	73.7°	+1.0°	May 1955
Bartow	11th Warmest (tie)	74.0°	73.1°	+0.9°	Jun 1892
Archbold Bio Stn	6th Warmest (tie)	73.9°	72.9°	+1.0°	Jan 1969
Wauchula 2 N	21st Warmest (tie)	73.3°	72.4°	+0.9°	Jan 1933
St. Leo	27th Warmest (tie)	72.9°	71.9°	+1.0°	Apr 1895
Inverness 3 SE	5th Warmest	72.4°	69.8°	+2.6°	Jul 1948
Tarpon Springs	55th Coolest (tie)	72.1°	72.9°	-0.8°	Jan 1892
Chiefland 5 ESE	8th Warmest	70.5°	69.2	+1.3°	Jul 1956

Temperature (F)
1/1/2022 - 12/31/2022



Departure from Normal Temperature (F)
1/1/2022 - 12/31/2022

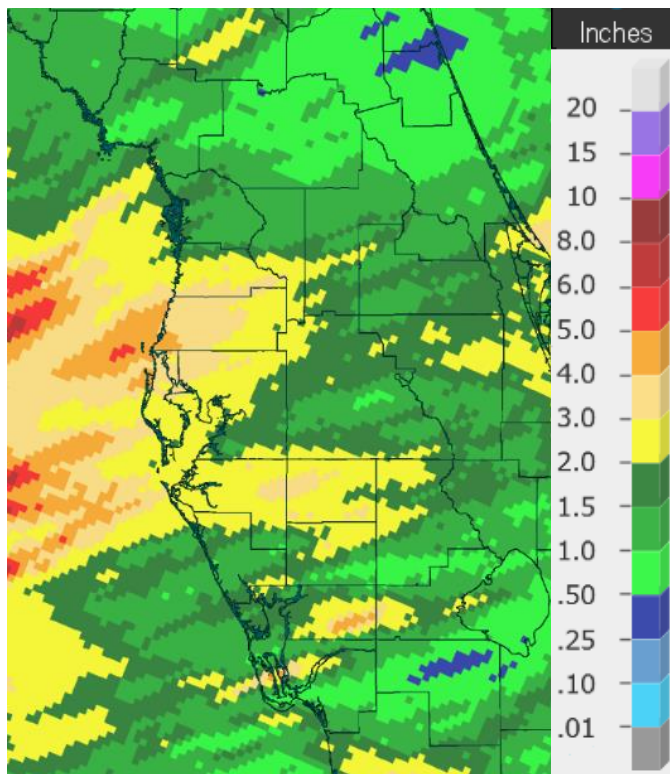


Graphics Source: NOAA Regional Climate Centers

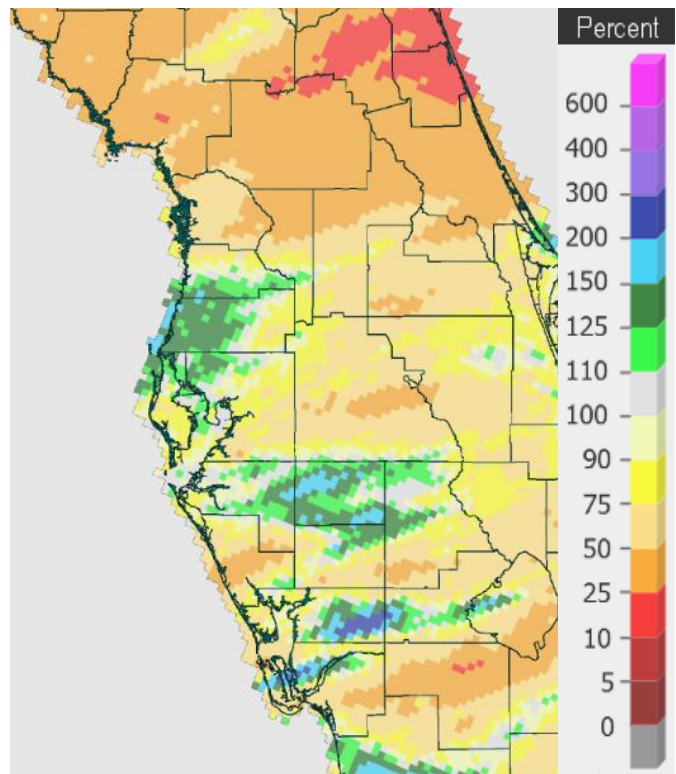
Taking a look at rainfall, December saw varying amounts with a few areas above normal while most of the region was below normal.

DECEMBER RAINFALL (inches):

Location	December 2022 Rank	Rain Total	Normal Dec Rain	Dep fm Normal	Records Began
Tarpon Springs	31st Wettest	3.76	2.74	+1.02	Jan 1892
Wauchula 2 N	12th Wettest	3.57	2.13	+1.44	Jan 1933
St. Leo	36th Wettest	3.03	2.53	+0.50	Apr 1895
Sarasota-Bradenton Area	33rd Wettest (tie)	2.63	2.33	+0.30	Jan 1911
Tampa Area	95th Driest	2.35	2.56	-0.21	Apr 1890
St. Petersburg Area	65th Driest	2.14	2.39	-0.25	Aug 1914
Lakeland Area	70th Driest (tie)	2.12	2.61	-0.49	Jan 1915
Plant City	7xth Driest	1.94	2.54	-0.60	Sep 1892
Winter Haven Area	45th Driest (tie)	1.79	2.68	-0.89	Mar 1941
Chiefland 5 ESE	18th Driest (tie)	1.41	3.25	-1.84	Jul 1956
Myakka River State Pk	38th Driest	1.39	2.51	-1.12	Sep 1943
Inverness 3 SE	25th Driest	1.22	2.48	-1.26	Jul 1948
Archbold Bio Stn	20th Driest	1.14	2.03	-0.89	Jan 1969
Fort Myers Area	61st Driest (tie)	1.10	1.90	-0.80	Jan 1902
Venice	28th Driest	1.07	2.31	-1.24	May 1955
Bartow	43rd Driest (tie)	1.05	2.16	-1.11	Jun 1892



Rainfall December 2022



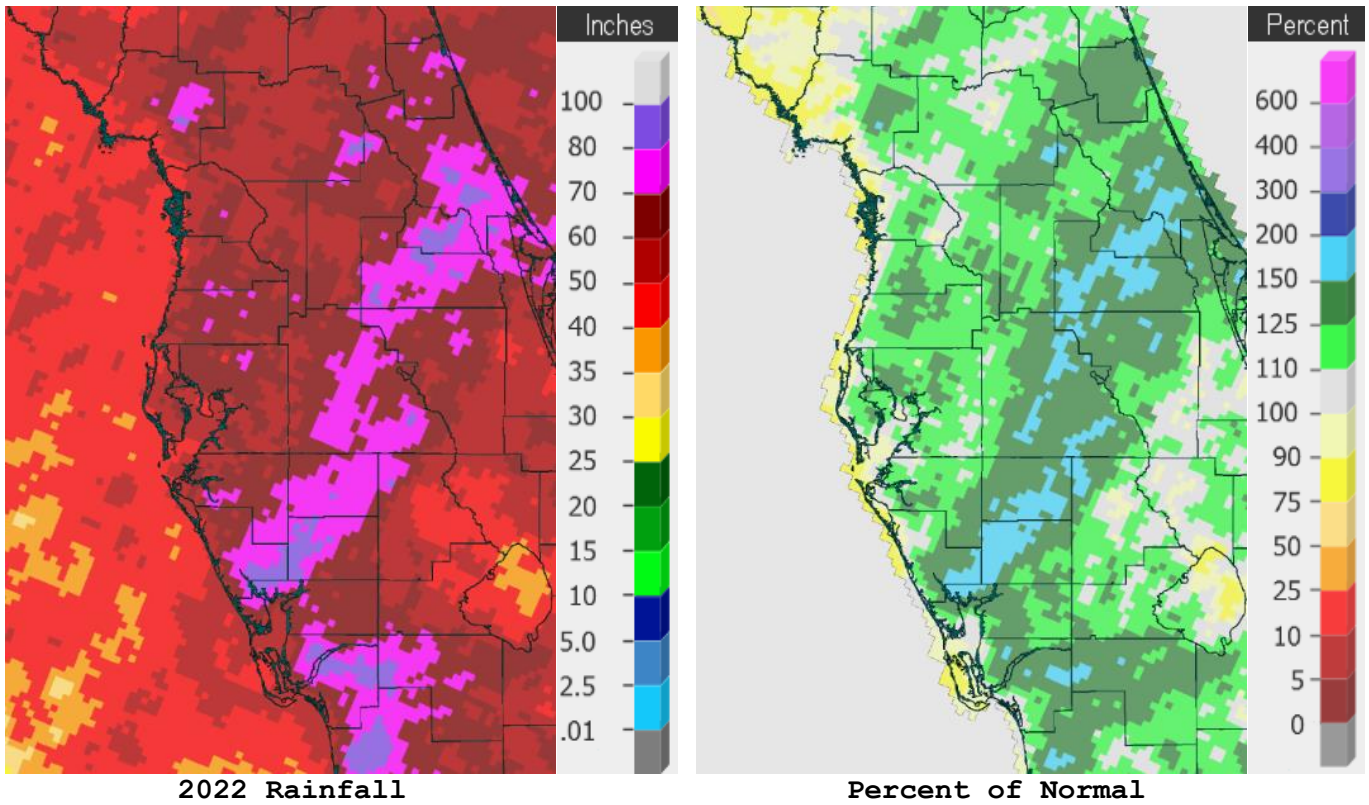
Percent of Normal

As for 2022, most of the area was above normal thanks to Hurricane Ian and Nicole, with only a small part of the northern Nature Coast below normal.

2022 RAINFALL (inches) :

Location	Rank	2022 Rain Total	Normal Ann Rain	Dep fm Normal	Records Began
Fort Myers Area	7th Wettest	72.70	57.41	+15.29	Jan 1902
Myakka River State Pk	11th Wettest*	70.89	61.07	+9.82	Sep 1943
Bartow	10th Wettest	68.74	50.88	+17.86	Jun 1892
Wauchula 2 N	8th Wettest	64.59	52.00	+12.59	Jan 1933
St. Leo	24th Wettest	63.20	53.46	+9.74	Apr 1895
Tampa Area	13th Wettest	61.95	49.48	+12.47	Apr 1890
Plant City	26th Wettest	61.28	56.11	+5.17	Sep 1892
Punta Gorda Area	16th Wettest	58.18	52.97	+5.21	May 1914
Venice	12th Wettest	57.82	51.27	+6.55	May 1955
Archbold Bio Stn	21st Wettest	56.28	54.23	+2.05	Jan 1969
Inverness 3 SE	20th Wettest	55.89	52.39	+3.50	Jul 1948
Sarasota-Bradenton Area	39th Wettest (tie)	54.28	49.05	+5.23	Jan 1911
Lakeland Area	60th Driest	52.60	56.82	-4.22	Jan 1915
St. Petersburg Area	46th Driest	46.10	46.65	-0.55	Aug 1914
Chiefland 5 ESE	6th Driest	45.90	57.10	-11.20	Jul 1956
Tarpon Springs	30th Driest	44.35	54.29	-9.94	Jan 1892

*Several Days missing in October



On the following pages are tables of the Top Ten Warmest, Coolest, Wettest, and Driest Decembers and Years at some official NWS locations, which include the average/total for this December and 2022 where available, and the 1991-2020 Normal temperature and rainfall for the month of December and Annually.

CHIEFLAND 5 ESE (Records began in July 1956):

Warmest Decembers		Coolest Decembers		Wettest Decembers		Driest Decembers	
1	65.0 in 2021	1	47.7 in 2010	1	11.85 in 2018	1	0.00 in 1956
2	64.7 in 1971	2	48.0 in 1963	2	9.84 in 1964	2	0.04 in 2015
3	63.7 in 1998	3	50.2 in 1989	3	9.68 in 1997	3	0.42 in 2001
4	63.7 in 1984	4	51.3 in 1960	4	8.39 in 2005		0.42 in 1984
5	62.1 in 1982	5	52.2 in 2005	5	7.77 in 1996	5	0.51 in 2011
6	61.9 in 1990	6	52.3 in 2003	6	6.66 in 1967	6	0.66 in 2010
7	61.6 in 1956	7	52.5 in 1993	7	6.52 in 1983	7	0.71 in 2021
8	61.5 in 2001	8	52.9 in 1980	8	6.20 in 1969	8	0.72 in 1980
9	61.4 in 2006	9	53.0 in 1985	9	5.53 in 1976	9	0.78 in 1985
	61.4 in 1991		53.0 in 1968	10	5.38 in 1977	10	0.80 in 1994
...				
22	58.8 in 2022	40	58.8 in 2022	48	1.41 in 2022	18	1.41 in 2022
					1.41 in 1998		1.41 in 1998

Normal Temperature for December at CHIF1 = 57.4°
 Normal Rainfall for December at CHIF1 = 3.25 inches

Warmest Years		Coolest Years		Wettest Years		Driest Years	
1	72.0 in 1998	1	66.5 in 2010	1	99.47 in 1964	1	40.77 in 2008
2	71.8 in 2020	2	67.0 in 1969	2	77.29 in 1959	2	41.70 in 2011
3	71.6 in 1990	3	67.4 in 1963	3	76.86 in 2018	3	41.85 in 2000
4	71.5 in 2018	4	67.7 in 1966	4	74.06 in 2004	4	43.05 in 2006
5	71.1 in 1991	5	68.0 in 1976	5	70.31 in 1996	5	45.45 in 1990
6	70.8 in 1982	6	68.2 in 1958	6	69.40 in 1983	6	45.90 in 2022
7	70.6 in 2021	7	68.4 in 2000	7	68.98 in 1965	7	46.69 in 2007
8	70.5 in 2022		68.4 in 1962	8	67.91 in 1982	8	47.05 in 1999
9	70.4 in 1975	9	68.5 in 1996	9	67.59 in 1966	9	48.04 in 1977
10	70.3 in 2012		68.5 in 1977	10	67.33 in 1957	10	49.21 in 1972
	70.3 in 1959						

Normal Temperature for the Year at CHIF1 = 69.2°
 Normal Rainfall for the Year at CHIF1 = 57.10 inches

INVERNESS 3 SE (Records began in July 1948):

Warmest Decembers	Coollest Decembers	Wettest Decembers	Driest Decembers
1 69.1 in 2015	1 47.7 in 2010	1 11.23 in 2018	1 0.11 in 1984
2 67.0 in 1948	2 50.1 in 1989	2 10.46 in 1997	2 0.14 in 2011
3 66.8 in 1971	3 52.4 in 2002	3 7.80 in 1953	3 0.26 in 1956
4 66.3 in 2016	4 54.1 in 2005	4 6.64 in 2002	4 0.42 in 1998
5 65.4 in 2021	5 54.3 in 1963	5 6.37 in 1973	5 0.50 in 2016
6 65.3 in 1949	6 54.4 in 1993	6 5.40 in 1969	6 0.63 in 2001
7 64.9 in 1967	7 55.0 in 1960	7 5.30 in 1977	7 0.73 in 2010
8 64.4 in 1956	8 55.4 in 2000	8 5.23 in 1972	8 0.75 in 1961
64.4 in 1951	9 55.5 in 2003	9 5.05 in 1981	9 0.77 in 2021
10 64.3 in 2007	10 55.9 in 1997	10 4.89 in 1983	10 0.79 in 1990
...
29 60.0 in 2022	35 60.0 in 2022	48 1.22 in 2022	25 1.22 in 2022

Normal Temperature for December at INVf1 = 59.0
 Normal Rainfall for December at INVf1 = 2.48 inches

Warmest Years	Coollest Years	Wettest Years	Driest Years
1 73.4 in 2015	1 68.8 in 1988	1 87.00 in 1960	1 35.66 in 1999
2 73.0 in 2020	2 68.9 in 2010	2 77.45 in 2021	2 36.50 in 1956
3 72.8 in 1949	3 69.0 in 1996	3 76.21 in 1953	3 37.34 in 1990
4 72.6 in 1953	4 69.3 in 1995	4 75.47 in 1982	4 38.22 in 2000
5 72.4 in 2022	5 69.4 in 2005	5 69.77 in 1959	5 40.35 in 2006
6 72.3 in 2019	6 69.6 in 1992	6 68.72 in 1964	6 42.22 in 1998
7 72.2 in 1975	7 69.7 in 1993	7 68.65 in 2018	7 43.28 in 1955
72.2 in 1974	8 69.8 in 1981	8 65.24 in 1958	8 44.24 in 1961
72.2 in 1959	68.8 in 1977	9 63.25 in 2002	9 44.29 in 1954
72.2 in 1957	10 69.9 in 2001	10 62.76 in 1992	10 45.17 in 2013
	
		20 55.89 in 2022	43 55.89 in 2022

Normal Temperature for the Year at INVf1 = 69.8°
 Normal Rainfall for the Year at INVf1 = 52.39 inches

BROOKSVILLE AREA (Records began in January 1892):

Warmest Decembers	Coollest Decembers	Wettest Decembers	Driest Decembers
1 70.5 in 2015	1 47.9 in 2010	1 10.10 in 1997	1 0.01 in 1955
2 70.1 in 1931	2 53.9 in 1935	2 9.23 in 2018	2 0.04 in 2015
3 68.6 in 1971	3 54.3 in 2003	3 8.30 in 1930	3 0.08 in 2011
4 67.1 in 1948	4 54.4 in 1989	4 8.10 in 1953	4 0.21 in 1908
5 66.8 in 2021	5 54.7 in 2005	5 6.91 in 1925	5 0.27 in 1910
66.8 in 1926	54.7 in 1903	6 6.40 in 1969	6 0.32 in 1946
7 66.5 in 1932	7 54.8 in 1930	7 6.38 in 1983	0.32 in 1932
8 66.4 in 1982	8 54.9 in 1963	8 5.99 in 2002	8 0.33 in 1956
9 66.3 in 1940	9 55.3 in 1985	9 5.68 in 1973	9 0.37 in 1992
10 66.2 in 1933	10 55.4 in 1910	10 5.60 in 1905	0.37 in 1990
...	...		
67 60.6 in 2022	52 60.6 in 2022		

Normal Temperature for December at BKV = 60.3°

Total Rainfall for December 2022 = Several days missing/unavailable

Normal Rainfall for December at BKV = 2.56 inches

Warmest Years	Coollest Years	Wettest Years	Driest Years
1 74.3 in 1927	1 67.9 in 2010	1 80.17 in 1959	1 35.63 in 2010
2 73.7 in 1929	2 68.7 in 1920	2 79.39 in 1912	2 36.58 in 2000
3 73.6 in 2015	3 69.4 in 2000	3 77.49 in 1960	3 37.46 in 1954
4 73.5 in 1933	4 69.5 in 2004	4 75.09 in 1945	4 37.83 in 1927
5 73.4 in 2020	5 69.6 in 2003	5 72.34 in 1982	5 38.08 in 1955
6 73.3 in 1948	6 69.7 in 2005	6 71.91 in 1928	6 38.20 in 1931
7 73.0 in 2019	7 69.9 in 1894	7 71.35 in 1964	7 39.62 in 2006
8 72.9 in 1949	8 70.0 in 2008	8 70.98 in 1995	8 40.48 in 1951
72.9 in 1939	9 70.1 in 1999	9 70.12 in 1906	9 40.70 in 1977
10 72.7 in 1946	70.1 in 1924	10 69.70 in 1983	10 41.10 in 1956

Average Temperature for 2022 = Many days missing in January and February

Normal Temperature for the Year at BKV = 70.7°

Total Rainfall for 2022 = Many days missing/unavailable

Normal Rainfall for the Year at BKV = 51.94 inches

ST LEO (Records began in April 1895):

Warmest Decembers	Coollest Decembers	Wettest Decembers	Driest Decembers
1 70.6 in 2015	1 51.4 in 2010	1 13.99 in 1997	1 0.13 in 1984
2 69.6 in 1931	2 52.1 in 1935	2 10.68 in 2002	0.13 in 1906
3 68.0 in 2021	3 53.0 in 1930	3 9.17 in 2018	3 0.14 in 2016
4 67.7 in 2007	4 54.1 in 1903	4 7.50 in 1900	4 0.17 in 1933
5 67.6 in 1948	5 54.2 in 1910	5 7.43 in 1981	5 0.18 in 1938
6 67.5 in 2001	6 55.1 in 1917	6 6.83 in 1969	6 0.22 in 2011
67.5 in 1984	7 56.6 in 1989	7 6.47 in 1983	0.22 in 1990
8 67.3 in 2006	8 56.7 in 1909	8 6.16 in 1953	8 0.23 in 1932
9 67.2 in 1998	9 57.0 in 1960	9 5.99 in 1907	0.23 in 1908
10 66.9 in 1982	10 57.2 in 1927	10 5.67 in 1930	10 0.31 in 1928
...	57.2 in 1895
62 61.3 in 2022	61 61.3 in 2022	36 3.03 in 2022	91 3.03 in 2022
61.3 in 1943	61.3 in 1943		

Normal Temperature for December at STLF1 = 62.1°
 Normal Rainfall for December at STLF1 = 2.53 inches

Warmest Years	Coollest Years	Wettest Years	Driest Years
1 74.5 in 1998	1 69.3 in 1930	1 81.93 in 1945	1 36.61 in 1961
2 74.4 in 1990	2 69.5 in 1920	2 80.06 in 1900	2 39.27 in 2000
74.4 in 1948	3 69.6 in 2010	3 79.57 in 1953	3 40.49 in 1932
4 74.1 in 1982	69.6 in 1910	4 75.57 in 1983	4 41.37 in 1955
5 73.9 in 2007	5 69.9 in 1931	5 75.34 in 1960	5 41.69 in 1908
6 73.8 in 2020	6 70.0 in 1928	6 72.45 in 1982	6 42.02 in 1990
7 73.7 in 2006	7 70.2 in 1903	7 71.29 in 2003	7 42.62 in 1952
73.7 in 1994	8 70.3 in 1968	8 70.41 in 1959	8 42.98 in 1980
73.7 in 1949	70.3 in 1940	9 69.85 in 1934	9 43.44 in 2006
10 73.6 in 1985	70.3 in 1917	10 69.68 in 2002	10 43.47 in 1967
73.6 in 1946		...	
...	...	24 63.20 in 2022	
27 72.9 in 2022	88 72.9 in 2022		
72.9 in 1995	72.9 in 1995		
72.9 in 1939	72.9 in 1939		
72.9 in 1925	72.9 in 1925		

Normal Temperature for the Year at STLF1 = 71.9°
 Normal Rainfall for the Year at STLF1 = 53.46 inches

TARPON SPRINGS (Records began in January 1892):

Warmest Decembers		Coolest Decembers		Wettest Decembers		Driest Decembers	
1	72.8 in 1931	1	50.9 in 2010	1	15.60 in 1997	1	0.02 in 1984
2	71.4 in 2015	2	53.1 in 1935	2	12.27 in 2002	2	0.12 in 2016
3	68.6 in 1971	3	53.3 in 1903	3	10.00 in 2018	3	0.14 in 1946
4	68.2 in 1998	4	53.6 in 1963	4	9.08 in 1983	4	0.17 in 1928
5	67.9 in 1982	5	55.0 in 1910	5	7.79 in 1969	5	0.19 in 2000
6	67.6 in 2016	6	55.6 in 1960	6	7.48 in 1973	6	0.20 in 1938
	67.6 in 2001		55.6 in 1917	7	6.95 in 1953	7	0.25 in 1906
8	67.5 in 2021	8	55.9 in 1930	8	5.75 in 1930	8	0.28 in 1908
9	67.2 in 2007	9	56.3 in 1989	9	5.47 in 1989	9	0.31 in 2011
	67.2 in 2006	10	56.5 in 2004	10	5.34 in 1907	10	0.35 in 1933
	67.2 in 1992			
...		...		31	3.76 in 2022	99	3.76 in 2022
73	60.5 in 2022	50	60.5 in 2022				

Normal Temperature for December at TRPF1 = 62.4°
 Normal Rainfall for December at TRPF1 = 2.74 inches

Warmest Years		Coolest Years		Wettest Years		Driest Years	
1	74.9 in 2019	1	69.5 in 1895	1	83.20 in 1959	1	32.85 in 2007
2	74.8 in 1990	2	69.6 in 1910	2	77.78 in 1957	2	32.87 in 1956
3	74.7 in 1994	3	69.9 in 1963	3	74.81 in 1960	3	33.48 in 1927
4	74.6 in 2015	4	70.0 in 1940	4	73.83 in 1983	4	35.39 in 1952
5	74.4 in 2017	5	70.1 in 1892	5	68.67 in 2012	5	36.66 in 2003
	74.4 in 1997	6	70.2 in 1968	6	67.64 in 1969	6	38.21 in 1967
	74.4 in 1991		70.2 in 1896	7	67.43 in 2019	7	38.65 in 1907
8	74.2 in 1998	8	70.3 in 2010	8	67.00 in 1925	8	39.65 in 1902
9	74.1 in 1932		70.3 in 1969	9	66.98 in 1900	9	40.15 in 1908
10	74.0 in 2018	10	70.5 in 1958	10	66.61 in 1997	10	40.50 in 1976
	74.0 in 1995		70.5 in 1904	
	74.0 in 1927			98	44.35 in 2022	30	44.35 in 2022
	74.0 in 1922						
...		...					
60	72.1 in 2022	55	72.1 in 2022				
	72.1 in 1987		72.1 in 1987				
	72.1 in 1928		72.1 in 1928				

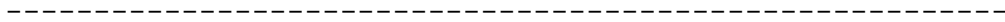
Normal Temperature for the Year at TRPF1 = 72.9°
 Normal Rainfall for the Year at TRPF1 = 54.29 inches

TAMPA AREA (Records began in April 1890):

Warmest Decembers	Coollest Decembers	Wettest Decembers	Driest Decembers
1 73.4 in 2015	1 53.2 in 2010	1 15.57 in 1997	1 0.07 in 1984
2 72.3 in 1931	2 54.5 in 1935	2 14.10 in 2002	2 0.09 in 1946
3 71.5 in 2021	3 54.9 in 1963	3 8.69 in 2018	0.09 in 1906
4 70.1 in 2016	4 55.5 in 1910	4 7.36 in 1907	4 0.13 in 1933
5 69.5 in 2006	5 55.8 in 1903	5 7.04 in 1941	5 0.19 in 2011
6 69.3 in 1971	6 56.1 in 1989	6 6.66 in 1950	0.19 in 1990
7 68.8 in 2001	7 56.7 in 1930	7 5.99 in 1930	7 0.20 in 1944
8 68.5 in 2013	8 56.8 in 1917	8 5.52 in 1973	8 0.21 in 1956
9 68.4 in 2007	9 57.5 in 1980	9 5.17 in 1969	9 0.29 in 1938
10 68.0 in 1998	57.5 in 1909	10 5.14 in 1905	10 0.30 in 1949
68.0 in 1948	
...	...	39 2.35 in 2022	95 2.35 in 2022
44 64.7 in 2022	90 64.7 in 2022		

Normal Temperature for December at TPA = 64.9°

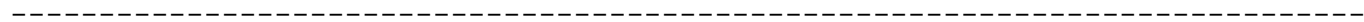
Normal Rainfall for December at TPA = 2.56 inches



Warmest Years	Coollest Years	Wettest Years	Driest Years
1 76.4 in 2022	1 69.8 in 1968	1 76.57 in 1959	1 28.89 in 1956
2 76.3 in 2020	2 70.1 in 1901	2 70.43 in 1957	2 29.85 in 2000
76.3 in 2017	3 70.3 in 1910	3 67.71 in 1997	3 31.47 in 1977
4 76.2 in 2015	4 70.4 in 1981	4 67.19 in 1912	4 32.25 in 1908
5 76.1 in 2021	5 70.5 in 1969	5 66.93 in 1894	5 32.31 in 1984
6 75.8 in 2019	6 71.0 in 1976	6 66.65 in 1945	6 33.90 in 1974
7 75.6 in 2018	71.0 in 1966	7 66.46 in 1979	7 34.32 in 1999
8 75.3 in 1990	71.0 in 1940	8 65.95 in 1947	8 34.39 in 1990
9 75.2 in 2016	71.0 in 1895	9 65.44 in 1960	9 34.77 in 1927
10 74.8 in 2012	71.0 in 1892	10 63.82 in 1899	10 34.87 in 1944
		11 63.50 in 2015	
		12 62.07 in 2002	
		13 61.95 in 2022	

Normal Temperature for the Year at TPA = 74.5°

Normal Rainfall for the Year at TPA = 49.48 inches



ST PETERSBURG AREA (Records began in August 1914):

Warmest Decembers	Coollest Decembers	Wettest Decembers	Driest Decembers
1 74.2 in 1931	1 56.4 in 2010	1 17.41 in 2002	1 0.07 in 1984
2 71.9 in 1971	2 56.7 in 1989	2 14.62 in 1997	2 0.14 in 1949
3 71.0 in 2021	3 56.9 in 1935	3 7.00 in 1983	0.14 in 1938
4 70.6 in 2015	4 57.1 in 1963	4 6.77 in 1973	4 0.24 in 1990
5 69.7 in 1998	5 58.7 in 1930	5 6.67 in 1930	5 0.28 in 2016
6 69.5 in 2016	6 58.8 in 1917	6 6.45 in 1969	6 0.38 in 2015
69.5 in 1948	7 59.2 in 1962	7 6.03 in 1914	7 0.41 in 1924
8 69.4 in 2013	8 59.6 in 1950	8 5.92 in 1953	8 0.43 in 1932
9 69.3 in 2007	9 60.0 in 1954	9 5.84 in 2018	9 0.44 in 1946
10 69.2 in 2001	10 60.4 in 1944	10 5.49 in 1950	10 0.45 in 2011
...
57 63.9 in 2022	50 63.9 in 2022	47 2.14 in 2022	65 2.14 in 2022
63.9 in 1999	63.9 in 2022		

Normal Temperature for December at SPG = 65.1°
 Normal Rainfall for December at SPG = 2.39 inches

Warmest Years	Coollest Years	Wettest Years	Driest Years
1 76.4 in 2020	1 71.8 in 1940	1 87.62 in 1959	1 30.41 in 1984
76.4 in 2015	2 72.3 in 1920	2 79.30 in 1953	2 32.57 in 1966
3 76.1 in 2017	3 72.4 in 1968	3 73.88 in 1957	3 33.54 in 2006
4 76.0 in 2021	72.4 in 1963	4 72.81 in 1997	4 34.01 in 1927
76.0 in 2003	5 72.5 in 1996	5 72.59 in 1947	5 34.88 in 1956
6 75.7 in 2005	6 72.6 in 1917	6 70.12 in 1954	6 36.34 in 1944
7 75.6 in 1946	7 72.7 in 1966	7 69.66 in 1988	7 36.40 in 2021
8 75.5 in 2012	72.7 in 1954	8 67.23 in 1922	8 36.52 in 2007
75.5 in 1972	72.7 in 1915	9 65.00 in 1952	9 36.62 in 1923
75.5 in 1933	10 72.8 in 1983	10 64.87 in 1995	10 37.15 in 2005
75.5 in 1932	
12 75.4 in 2022		64 46.10 in 2022	46 46.10 in 2022
75.4 in 2018			
75.4 in 1990			

Normal Temperature for the Year at SPG = 74.7°
 Normal Rainfall for the Year at SPG = 46.65 inches

PLANT CITY (Records began in September 1892):

Warmest Decembers	Coollest Decembers	Wettest Decembers	Driest Decembers
1 73.0 in 2015	1 51.1 in 1935	1 14.75 in 1997	1 0.00 in 1908
2 70.6 in 1971	2 53.0 in 2010	2 9.63 in 2002	2 0.05 in 1906
3 70.5 in 2016	3 54.0 in 1930	3 7.94 in 2018	3 0.21 in 1932
4 69.7 in 2021	4 54.1 in 1910	4 7.62 in 1905	4 0.22 in 1984
5 69.6 in 1931	5 56.0 in 1989	5 6.57 in 1983	5 0.26 in 1987
6 68.9 in 1948	6 56.1 in 1963	6 6.47 in 1925	0.26 in 1917
7 68.4 in 2013	7 56.2 in 1903	7 6.14 in 1969	7 0.28 in 2016
8 67.9 in 1978	8 57.2 in 1915	8 6.06 in 1907	0.28 in 1962
9 67.7 in 2007	9 57.3 in 1901	9 6.04 in 1930	9 0.30 in 1933
10 67.6 in 1998	10 57.5 in 1917	10 5.80 in 1941	10 0.32 in 1956
...	...		0.32 in 1946
35 64.7 in 2022	83 64.7 in 2022
		51 1.94 in 2022	74 1.94 in 2022

Normal Temperature for December at PLCF1 = 65.0°
 Normal Rainfall for December at PLCF1 = 2.54 inches

Warmest Years	Coollest Years	Wettest Years	Driest Years
1 76.6 in 2020	1 69.2 in 1930	1 86.68 in 1959	1 32.96 in 1961
76.6 in 2019	2 69.4 in 1931	2 79.20 in 1947	2 36.36 in 1909
3 75.8 in 2021	3 69.8 in 1940	3 78.25 in 1960	3 37.24 in 1956
4 75.7 in 2022	4 70.4 in 1928	4 76.88 in 2004	4 39.17 in 1977
5 75.3 in 2015	5 70.6 in 1942	5 75.82 in 1953	5 39.29 in 2007
6 75.0 in 2016	70.6 in 1935	6 71.97 in 1983	6 39.48 in 1981
7 74.9 in 2018	7 70.8 in 2010	7 71.76 in 1933	7 39.74 in 1990
8 74.2 in 1948	70.8 in 1926	8 70.65 in 1957	8 40.41 in 1927
9 74.1 in 1990	9 70.9 in 1976	9 69.35 in 1905	9 40.49 in 1908
74.1 in 1911	70.9 in 1932	10 68.88 in 2018	10 42.38 in 2000
		...	
		26 61.28 in 2022	

Normal Temperature for the Year at PLCF1 = 74.3°
 Normal Rainfall for the Year at PLCF1 = 56.11 inches

LAKELAND AREA (Records began in January 1915):

Warmest Decembers	Coollest Decembers	Wettest Decembers	Driest Decembers
1 73.1 in 2015	1 53.2 in 2010	1 12.28 in 1997	1 Trace in 1917
2 72.8 in 1931	2 54.8 in 1935	2 11.74 in 2002	2 0.09 in 1944
3 70.2 in 2016	3 56.2 in 1963	3 8.13 in 2018	3 0.10 in 1924
4 70.0 in 1971	4 56.8 in 1989	4 7.04 in 1983	4 0.12 in 1938
5 69.1 in 2021	5 57.3 in 1960	5 6.15 in 1930	5 0.14 in 1962
6 68.6 in 2013	6 57.9 in 1930	6 6.09 in 1925	6 0.17 in 1987
7 68.4 in 2007	7 58.2 in 1950	7 5.51 in 1989	7 0.30 in 1932
8 68.0 in 1922	8 58.4 in 1954	8 5.33 in 1941	8 0.34 in 1984
9 67.9 in 2001	9 58.9 in 1980	9 5.21 in 1949	9 0.35 in 1990
10 67.8 in 1998	10 59.0 in 1969	10 4.53 in 1950	10 0.36 in 1943
...	59.0 in 1944	...	0.36 in 1933
49 64.0 in 2022	59 64.0 in 2022	38 2.12 in 2022	70 2.12 in 2022
64.0 in 1934	64.0 in 1934	2.12 in 1981	2.12 in 1981

Normal Temperature for December at LLDF1 = 64.8°
 Normal Rainfall for December at LLDF1 = 2.61 inches

Warmest Years	Coollest Years	Wettest Years	Driest Years
1 75.7 in 2020	1 70.6 in 1968	1 78.15 in 2018	1 34.93 in 1927
75.7 in 2015	2 70.9 in 1969	2 70.24 in 1959	2 35.83 in 1961
3 75.6 in 2019	3 71.0 in 1966	3 69.72 in 1979	3 36.30 in 1954
75.6 in 1990	71.0 in 1958	4 68.82 in 2017	4 37.36 in 1985
5 75.3 in 2021	71.0 in 1940	5 67.13 in 1994	5 37.80 in 1967
6 75.2 in 2017	6 71.2 in 1970	6 66.92 in 2005	6 38.06 in 1962
7 75.2 in 1994	7 71.4 in 1960	7 66.58 in 2002	7 38.26 in 2000
8 75.0 in 2022	71.4 in 1920	8 66.13 in 2004	8 38.29 in 1972
9 74.8 in 2016	9 71.5 in 1963	9 65.42 in 1960	9 39.43 in 1990
74.8 in 1991	10 71.6 in 2010	10 63.79 in 1919	10 39.57 in 1984
...	39.57 in 1981
		48 52.60 in 2022	60 52.60 in 2022
			39.57 in 1942

Normal Temperature for the Year at LLDF1 = 73.9°
 Normal Rainfall for the Year at LLDF1 = 56.82 inches

WINTER HAVEN AREA (Records began in March 1941):

Warmest Decembers	Coollest Decembers	Wettest Decembers	Driest Decembers
1 72.4 in 2015	1 52.7 in 2010	1 12.52 in 2002	1 0.03 in 1987
2 70.8 in 1971	2 55.5 in 1963	2 9.79 in 1997	0.03 in 1984
3 70.3 in 2021	3 57.4 in 1989	3 6.91 in 2018	3 0.07 in 1990
4 69.5 in 1948	4 59.1 in 1962	4 6.44 in 1983	4 0.21 in 1956
5 69.2 in 2016	59.1 in 1960	5 5.35 in 1989	5 0.23 in 1962
6 68.4 in 1946	6 59.2 in 1968	6 4.75 in 1991	6 0.29 in 1944
7 68.1 in 1984	7 59.3 in 1950	7 3.88 in 1947	7 0.33 in 2011
8 68.0 in 2007	8 59.8 in 1944	8 3.87 in 1950	8 0.40 in 1991
68.0 in 1991	9 59.9 in 2000	9 3.77 in 1941	0.40 in 1968
68.0 in 1986	10 60.1 in 2003	10 3.63 in 1969	10 0.47 in 1943
	60.1 in 1952
		36 1.79 in 2022	45 1.79 in 2022
		1.79 in 1946	1.79 in 1946

Average Temperature for Dec 2022 = Few days missing
 Normal Temperature for December at GIF = 64.6°
 Normal Rainfall for December at GIF = 2.68 inches

Warmest Years	Coollest Years	Wettest Years	Driest Years
1 76.6 in 2019	1 70.2 in 1968	1 73.28 in 1959	1 30.35 in 2000
2 76.2 in 2015	2 71.1 in 1981	2 69.61 in 1960	2 31.95 in 2006
3 76.1 in 2020	3 71.2 in 1963	3 65.94 in 1957	3 32.73 in 2009
4 75.8 in 1989	4 71.4 in 1977	4 65.09 in 1947	4 35.26 in 1985
5 75.7 in 1991	71.4 in 1969	5 64.90 in 1948	5 36.78 in 2007
6 75.3 in 2021	6 71.6 in 2010	6 63.55 in 1953	6 36.89 in 1980
7 75.1 in 2018	71.6 in 1958	7 62.94 in 1983	7 39.02 in 2021
75.1 in 2017	8 71.9 in 1962	8 62.73 in 1994	8 39.06 in 2017
9 75.0 in 1990	71.9 in 1960	9 62.10 in 1982	9 39.51 in 1972
10 74.7 in 2016	10 72.0 in 1966	10 61.77 in 2002	10 39.81 in 1961

Average Temperature for 2022 = Many days missing/unrepresentative
 Normal Temperature for the Year at GIF = 74.6°

Total Rainfall for 2022 = Many days missing/unrepresentative
 Normal Rainfall for the Year at GIF = 46.12 inches

BARTOW (Records began in June 1892):

Warmest Decembers		Coolest Decembers		Wettest Decembers		Driest Decembers	
1	72.4 in 2015	1	53.2 in 2010	1	13.31 in 2002	1	0.00 in 1906
2	71.0 in 2013	2	54.1 in 1910	2	11.38 in 1983	2	0.05 in 1932
3	69.2 in 1948	3	54.4 in 1903	3	10.70 in 1997	3	0.08 in 1933
4	69.0 in 2016	4	55.9 in 1915	4	8.25 in 1905	4	0.15 in 1944
	69.0 in 2001	5	57.1 in 1909	5	6.45 in 2018	5	0.23 in 1962
	69.0 in 1971	6	57.3 in 1963	6	6.35 in 1900	6	0.24 in 1987
7	68.5 in 2021	7	57.4 in 1954	7	5.50 in 1925		0.24 in 1956
8	68.4 in 1998	8	57.6 in 1989	8	5.25 in 1942	8	0.27 in 1990
9	68.2 in 2006	9	58.4 in 1960	9	5.14 in 1930	9	0.28 in 1984
10	67.8 in 1986	10	59.0 in 2020	10	5.07 in 1989	10	0.29 in 1946
...		
35	63.8 in 2022	51	63.8 in 2022	88	1.05 in 2022	43	1.05 in 2022
					1.05 in 2021		1.05 in 2021

Normal Temperature for December at BARF1 = 63.6°
 Normal Rainfall for December at BARF1 = 2.16 inches

Warmest Years		Coolest Years		Wettest Years		Driest Years	
1	76.0 in 2014	1	70.8 in 1901	1	83.44 in 1959	1	34.10 in 2007
2	74.9 in 1998	2	71.2 in 1968	2	77.99 in 1983	2	35.87 in 2000
3	74.8 in 1948		71.2 in 1914	3	73.96 in 1930	3	36.43 in 1927
4	74.6 in 2020	4	71.3 in 1896	4	73.85 in 1960	4	37.19 in 1950
	74.6 in 2012	5	71.5 in 1893	5	73.72 in 1957	5	37.51 in 2006
6	74.5 in 2019	6	71.6 in 1976	6	73.58 in 1947	6	40.72 in 1990
7	74.4 in 2017		71.6 in 1970	7	71.44 in 2002	7	41.00 in 1916
8	74.1 in 2021		71.6 in 1963	8	71.29 in 1924	8	41.41 in 1955
	74.1 in 1997		71.6 in 1913	9	69.90 in 1903	9	42.29 in 1999
	74.1 in 1982	10	71.9 in 1981	10	68.74 in 2022	10	42.48 in 1974
11	74.0 in 2022		71.9 in 1979				
	74.0 in 1999		71.9 in 1956				
			71.9 in 1912				

Normal Temperature for the Year at BARF1 = 73.1°
 Normal Rainfall for the Year at BARF1 = 50.88 inches

SARASOTA-BRADENTON AREA (Records began in January 1911):

Warmest Decembers	Coollest Decembers	Wettest Decembers	Driest Decembers
1 72.8 in 2015	1 53.0 in 2010	1 11.94 in 1997	1 0.00 in 1933
2 71.2 in 1931	2 54.9 in 1935	2 11.63 in 2002	2 0.03 in 1949
3 69.8 in 1971	3 56.8 in 1930	3 8.10 in 2018	3 0.17 in 2011
4 69.5 in 2006	4 57.4 in 1963	4 6.86 in 1914	4 0.19 in 1962
5 69.3 in 2021	5 58.0 in 1917	5 6.71 in 1977	5 0.21 in 2013
69.3 in 2016	6 58.4 in 1915	6 6.23 in 1983	6 0.24 in 1984
7 69.1 in 2013	7 58.7 in 1989	7 6.21 in 1930	7 0.28 in 1923
8 68.8 in 2007	58.7 in 1976	8 5.80 in 1958	8 0.31 in 1938
9 68.7 in 2019	9 59.0 in 1944	9 5.72 in 1913	9 0.34 in 1946
10 68.6 in 1948	10 59.4 in 1985	10 5.58 in 1953	10 0.36 in 1932
...	59.4 in 1980
42 65.1 in 2022	65 65.1 in 2022	33 2.63 in 2022	77 2.63 in 2022
65.1 in 1936	65.1 in 1936	2.63 in 1979	2.63 in 1979
		2.63 in 1927	2.63 in 1927

Normal Temperature for December at SRQ = 65.2°

Normal Rainfall for December at SRQ = 2.33 inches

Warmest Years	Coollest Years	Wettest Years	Driest Years
1 76.3 in 2020	1 70.6 in 1977	1 82.98 in 1957	1 29.45 in 1944
2 76.2 in 2019	70.6 in 1976	2 78.59 in 1959	2 31.51 in 2007
3 75.3 in 2016	70.6 in 1940	3 78.33 in 1997	3 31.98 in 1956
4 75.2 in 2015	4 70.9 in 2010	4 77.50 in 1912	4 32.19 in 1951
75.2 in 1990	70.9 in 1981	5 73.49 in 1960	5 33.23 in 2009
6 74.8 in 2021	70.9 in 1968	6 72.21 in 1922	6 34.00 in 1923
7 74.7 in 2022	70.9 in 1930	7 68.52 in 1943	7 34.32 in 2008
8 74.6 in 2017	8 71.0 in 1931	8 68.02 in 1983	8 36.97 in 1950
9 74.5 in 1994	71.0 in 1915	9 67.46 in 1958	9 37.45 in 2000
10 74.4 in 2018	10 71.1 in 1928	10 67.01 in 1928	10 38.87 in 1973
74.4 in 2012	
74.4 in 2007		39 54.28 in 2022	72 54.28 in 2022
		54.28 in 1935	54.28 in 1935

Normal Temperature for the Year at SRQ = 74.1°

Normal Rainfall for the Year at SRQ = 49.05 inches

VENICE (Records began in May 1955):

Warmest Decembers		Coolest Decembers		Wettest Decembers		Driest Decembers	
1	73.1 in 1987	1	54.8 in 2010	1	9.48 in 1997	1	0.04 in 2016
2	72.9 in 2015	2	57.7 in 1989	2	7.39 in 2018	2	0.07 in 2011
3	70.9 in 1971	3	57.9 in 1963	3	6.50 in 1983	3	0.10 in 2014
4	70.7 in 2016	4	59.4 in 1976	4	6.00 in 2002	4	0.13 in 2013
5	70.2 in 2021		59.4 in 1960	5	5.34 in 2009		0.13 in 1991
6	69.3 in 1998	6	59.7 in 1981	6	5.25 in 1986	6	0.18 in 1987
7	69.1 in 2011	7	60.1 in 2003	7	4.94 in 2003	7	0.33 in 1962
8	68.6 in 1982		60.1 in 1962	8	4.16 in 1958	8	0.44 in 1984
9	68.3 in 2006	9	60.2 in 1975	9	4.12 in 1989	9	0.50 in 2021
10	68.2 in 2001	10	60.5 in 1973	10	3.85 in 1979	10	0.60 in 2001
...		
24	66.1 in 2022	39	66.1 in 2022	41	1.07 in 2022	28	1.07 in 2022

Normal Temperature for December at VNCF1 = 64.9°
 Normal Rainfall for December at VNCF1 = 2.31 inches

Warmest Years		Coolest Years		Wettest Years		Driest Years	
1	76.0 in 2012	1	70.9 in 1981	1	75.08 in 1995	1	29.07 in 1990
2	75.9 in 2019	2	71.2 in 1977	2	74.15 in 1957	2	32.46 in 2007
3	75.7 in 2015	3	71.8 in 1962	3	73.28 in 1959	3	35.52 in 1985
	75.7 in 1998	4	71.9 in 1978	4	72.40 in 1983	4	36.50 in 1961
5	75.6 in 2011	5	72.0 in 1969	5	65.46 in 2003	5	36.69 in 1956
6	75.3 in 2020		72.0 in 1960	6	63.35 in 2005	6	37.23 in 1981
7	75.1 in 1997	7	72.1 in 1966	7	63.13 in 1992	7	38.45 in 2021
	75.1 in 1994		72.1 in 1963	8	62.98 in 1969	8	38.50 in 2009
9	75.0 in 2017		72.1 in 1956	9	61.25 in 2017	9	39.49 in 2019
10	74.7 in 2022	10	72.3 in 1970	10	59.17 in 1982	10	40.51 in 2000
				11	57.94 in 1999		
				12	57.82 in 2022		

Normal Temperature for the Year at VNCF1 = 73.7°
 Normal Rainfall for the Year at VNCF1 = 51.27 inches

MYAKKA RIVER STATE PARK (Temperature records began in March 1956
and Rainfall records began in Sep 1943):

Warmest Decembers	Coollest Decembers	Wettest Decembers	Driest Decembers
1 73.3 in 2015	1 53.4 in 2010	1 10.89 in 1997	1 0.03 in 1949
2 70.8 in 2016	2 55.9 in 1969	2 9.65 in 2002	2 0.10 in 1991
3 69.4 in 2013	3 57.0 in 1989	3 8.20 in 1983	3 0.16 in 1961
4 69.3 in 1998	4 57.2 in 1960	4 7.59 in 2018	4 0.17 in 2011
5 69.2 in 1971	5 57.3 in 1962	5 6.32 in 1958	5 0.19 in 1987
6 69.1 in 2006	6 58.7 in 1968	6 6.06 in 2009	6 0.22 in 2013
7 68.7 in 2007	7 59.1 in 1957	7 5.97 in 1977	0.22 in 1962
8 68.1 in 1982	8 59.9 in 2002	8 5.48 in 2003	8 0.25 in 1956
9 68.0 in 1991	9 60.0 in 2020	9 5.00 in 2015	9 0.29 in 1943
10 67.9 in 1992	60.0 in 1973	10 4.23 in 1989	10 0.36 in 1984
67.9 in 1986	
...	...	41 1.39 in 2022	38 1.39 in 2022
31 63.6 in 2022	26 63.6 in 2022		

Normal Temperature for December at MKCF1 = 64.8°
Normal Rainfall for December at MKCF1 = 2.51 inches

Warmest Years	Coollest Years	Wettest Years	Driest Years
1 76.0 in 2015	1 70.6 in 1962	1 82.31 in 1995	1 36.97 in 1961
2 75.5 in 2019	2 71.3 in 1958	2 80.36 in 1983	2 38.15 in 1956
3 75.2 in 1997	3 71.6 in 1970	3 78.82 in 2018	3 38.24 in 1955
4 75.0 in 1990	71.6 in 1960	4 77.59 in 1959	4 39.15 in 1944
5 74.9 in 2017	5 71.8 in 2010	5 76.72 in 1982	5 42.29 in 1950
6 74.8 in 1982	71.8 in 1977	6 76.60 in 2003	6 42.54 in 1946
7 74.6 in 2016	7 72.1 in 1981	7 76.52 in 1998	7 44.03 in 1985
74.6 in 1994	72.1 in 1976	8 76.04 in 1997	8 44.10 in 1986
9 74.5 in 2018	72.1 in 1973	9 75.62 in 1957	9 44.36 in 2021
74.5 in 1999	10 72.2 in 1988	10 71.72 in 2017	10 45.21 in 2000
		11 70.89 in 2022*	

Average Temperature for 2022 = Numerous Days missing, most in early October
Normal Temperature for the Year at MKCF1 = 73.6°

*Total Rainfall for 2022 = Numerous Days missing, most in early October
Normal Rainfall for the Year at MKCF1 = 61.07 inches

WAUCHULA 2 N (Records began in January 1933):

Warmest Decembers	Coollest Decembers	Wettest Decembers	Driest Decembers
1 72.0 in 2015	1 50.0 in 2010	1 7.89 in 2002	1 0.00 in 2001
2 70.0 in 1971	2 54.4 in 2009	2 6.29 in 1997	2 0.11 in 1938
3 69.8 in 2007	3 55.7 in 1935	3 6.10 in 2018	3 0.12 in 1956
4 68.7 in 2016	4 56.8 in 1963	4 5.57 in 2009	4 0.14 in 1933
68.7 in 1948	5 57.0 in 2003	5 5.51 in 1986	5 0.20 in 2011
6 68.4 in 1940	6 58.5 in 1989	6 4.83 in 1977	6 0.21 in 1934
7 67.8 in 2006	7 58.6 in 2020	7 4.77 in 1958	7 0.22 in 2013
8 67.7 in 1986	58.6 in 2002	8 4.20 in 1940	8 0.28 in 1991
9 67.6 in 1946	58.6 in 1954	9 4.13 in 1950	9 0.31 in 2014
10 67.5 in 1941	10 58.7 in 2005	10 4.11 in 1989	0.31 in 1949
...	...	11 3.79 in 1983	
43 63.1 in 2022	42 63.1 in 2022	12 3.57 in 2022	
63.1 in 1965	63.1 in 1965		

Normal Temperature for December at WAUF1 = 63.0°
 Normal Rainfall for December at WAUF1 = 2.13 inches

Warmest Years	Coollest Years	Wettest Years	Driest Years
1 74.9 in 1990	1 70.8 in 1996	1 83.48 in 1953	1 29.56 in 2000
2 74.5 in 2008	2 70.9 in 2014	2 82.10 in 1947	2 36.59 in 2007
74.5 in 1948	3 71.3 in 1954	3 69.13 in 1959	3 36.66 in 1981
4 74.4 in 2015	4 71.4 in 1981	4 68.89 in 1939	4 36.93 in 1961
5 74.3 in 1991	71.4 in 1968	5 67.34 in 1983	5 40.25 in 1989
74.3 in 1933	71.4 in 1956	6 66.05 in 1998	6 40.27 in 1999
7 74.2 in 2009	7 71.5 in 2012	7 65.77 in 1997	7 41.39 in 2006
8 74.1 in 1989	71.5 in 2011	8 64.59 in 2022	8 42.06 in 1967
9 74.0 in 2019	9 71.6 in 1976	9 63.91 in 1960	9 43.58 in 1950
10 73.9 in 2020	10 71.7 in 2013	10 62.98 in 1943	10 43.66 in 1966
73.9 in 2017	71.7 in 1999		
73.9 in 1946	71.7 in 1940		
...			
21 73.3 in 2022			
73.3 in 1938			

Normal Temperature for the Year at WAUF1 = 72.4°
 Normal Rainfall for the Year at WAUF1 = 52.00 inches

ARCHBOLD BIO STN (Records began in January 1969):

Warmest Decembers	Coollest Decembers	Wettest Decembers	Driest Decembers
1 73.4 in 2015	1 52.1 in 2010	1 7.60 in 1997	1 0.22 in 1981
2 70.5 in 2016	2 56.3 in 1989	2 6.22 in 2002	2 0.27 in 2005
3 69.1 in 1971	3 57.8 in 1969	3 4.90 in 1977	3 0.31 in 1970
4 69.0 in 2006	4 59.1 in 2003	4 4.16 in 1978	4 0.38 in 2000
5 68.4 in 2013	5 59.2 in 1980	5 3.83 in 1994	5 0.40 in 2021
6 67.3 in 2021	6 59.4 in 1993	6 3.75 in 2003	6 0.42 in 2013
7 67.2 in 1986	7 60.1 in 1985	7 3.35 in 1986	7 0.43 in 2011
8 67.0 in 2007	8 60.3 in 2020	8 3.10 in 2020	8 0.51 in 1982
9 66.7 in 1998	9 60.5 in 2005	9 3.04 in 2015	9 0.54 in 2016
10 66.3 in 1978	60.5 in 2002	10 2.93 in 1974	10 0.55 in 2001
...
23 64.4 in 2022	31 64.4 in 2022	35 1.14 in 2022	20 1.14 in 2022
64.4 in 2014	64.4 in 2014		

Normal Temperature for December at ACHF1 = 64.4°
 Normal Rainfall for December at ACHF1 = 2.03 inches

Warmest Years	Coollest Years	Wettest Years	Driest Years
1 75.4 in 2015	1 70.1 in 2010	1 72.61 in 2002	1 27.31 in 2000
2 74.3 in 2020	2 70.6 in 1981	2 66.06 in 2004	2 33.00 in 2007
74.3 in 2017	3 70.7 in 1983	3 64.09 in 1969	3 36.26 in 1980
4 74.1 in 2019	4 71.0 in 1970	4 63.49 in 2013	4 37.46 in 2009
5 74.0 in 1990	71.0 in 1969	5 62.23 in 1992	5 41.45 in 1971
6 73.9 in 2022	6 71.1 in 2000	6 61.73 in 2015	6 43.02 in 1975
73.9 in 2016	71.1 in 1988	7 61.07 in 1982	7 43.84 in 1996
8 73.7 in 1991	71.1 in 1984	8 60.89 in 1979	8 43.97 in 1985
73.7 in 1975	9 71.2 in 1996	9 60.33 in 2001	9 45.03 in 1981
10 73.3 in 2021	10 71.3 in 1987	10 60.10 in 1999	10 45.06 in 1972
73.3 in 2018	71.3 in 1977
	71.3 in 1976	21 56.28 in 2022	34 56.28 in 2022

Normal Temperature for the Year at ACHF1 = 72.9°
 Normal Rainfall for the Year at ACHF1 = 54.23 inches

PUNTA GORDA AREA (Records began in May 1914):

Warmest Decembers	Coollest Decembers	Wettest Decembers	Driest Decembers
1 72.8 in 2015	1 54.0 in 2010	1 6.88 in 2002	1 0.00 in 1933
2 72.5 in 1931	2 57.6 in 1935	2 6.50 in 1925	2 0.07 in 1938
3 71.4 in 1948	3 58.0 in 1963	3 6.47 in 1997	3 0.09 in 1926
4 70.4 in 2013	4 58.4 in 1917	4 5.42 in 1995	4 0.12 in 1932
70.4 in 1971	5 59.9 in 2003	5 4.95 in 1958	5 0.15 in 2014
70.4 in 1946	6 60.1 in 1989	6 4.92 in 1977	6 0.17 in 2011
7 70.0 in 2021	60.1 in 1969	7 4.63 in 2009	7 0.25 in 1981
70.0 in 2016	8 60.3 in 1968	8 4.49 in 1967	8 0.27 in 1928
70.0 in 1932	9 60.6 in 1975	9 4.31 in 1969	9 0.28 in 1991
10 69.7 in 1951	10 60.7 in 1930	10 4.00 in 1986	10 0.34 in 2000
	60.7 in 1915		0.34 in 1962
...	...		
45 66.0 in 2022	59 66.0 in 2022		
66.0 in 1987	66.0 in 1987		

Normal Temperature for December at PGD = 65.8°

Total Rainfall for Dec 2022 = 0.89 (Two days missing)

Normal Rainfall for December at PGD = 1.99 inches

Warmest Years	Coollest Years	Wettest Years	Driest Years
1 76.8 in 1948	1 71.5 in 1968	1 88.10 in 1947	1 30.01 in 2007
2 76.4 in 1946	2 71.6 in 2010	2 87.09 in 1959	2 30.07 in 1927
3 75.9 in 2020	3 71.8 in 1969	3 81.06 in 1995	3 32.85 in 1990
4 75.8 in 1949	71.8 in 1915	4 65.33 in 1922	4 35.07 in 1955
5 75.6 in 2018	5 71.9 in 1976	5 64.87 in 2003	5 36.18 in 2000
75.6 in 1990	71.9 in 1970	6 64.43 in 1983	6 36.87 in 1976
75.6 in 1945	7 72.3 in 1940	7 63.97 in 1928	7 37.41 in 1923
8 75.5 in 2015	8 72.4 in 1977	8 63.30 in 2018	8 38.03 in 1920
9 75.4 in 2022	9 72.6 in 1942	9 62.41 in 2016	9 38.11 in 1971
75.4 in 2021	10 72.7 in 1930	10 62.02 in 1958	10 39.17 in 1956
		...	
		16 58.18 in 2022*	

*Two days missing in Dec

Normal Temperature for the Year at PGD = 74.3°

Normal Rainfall for the Year at PGD = 52.97 inches

FORT MYERS AREA (Records began in January 1902):

Warmest Decembers	Coollest Decembers	Wettest Decembers	Driest Decembers
1 73.6 in 2015	1 56.7 in 2010	1 7.04 in 1925	1 Trace in 1956
2 73.3 in 2016	2 58.4 in 1935	2 6.21 in 1905	2 0.01 in 1924
3 72.8 in 1931	3 58.5 in 1903	3 5.71 in 2019	3 0.02 in 1984
4 72.6 in 2021	4 58.8 in 1910	4 5.46 in 1997	0.02 in 1906
5 72.3 in 1971	5 59.3 in 1963	5 5.42 in 1940	5 0.05 in 2014
6 71.5 in 2013	6 60.3 in 1950	6 5.26 in 1986	6 0.09 in 2005
7 71.2 in 2007	7 60.5 in 1954	7 5.16 in 1979	7 0.13 in 1933
8 70.9 in 2006	8 60.8 in 1989	8 4.68 in 2003	8 0.14 in 1951
9 70.7 in 2019	9 61.0 in 1969	9 4.35 in 1978	9 0.15 in 1926
10 70.5 in 1948	61.0 in 1930	10 3.95 in 1969	10 0.16 in 1968
...	
24 68.8 in 2022		60 1.10 in 2022	61 1.10 in 2022
68.8 in 1991		1.10 in 1909	1.10 in 1909
68.8 in 1951			
68.8 in 1946			
68.8 in 1932			

Normal Temperature for December at FMY = 67.3°

Normal Rainfall for December at FMY = 1.90 inches

Warmest Years	Coollest Years	Wettest Years	Driest Years
1 77.6 in 2022	1 71.2 in 1910	1 80.17 in 1947	1 32.83 in 1964
2 77.1 in 2020	2 71.8 in 1903	2 77.35 in 1922	2 32.85 in 1927
3 77.0 in 2015	3 72.1 in 1904	3 74.85 in 1983	3 33.93 in 1944
77.0 in 1990	4 72.3 in 1958	4 74.75 in 1912	4 34.28 in 1956
5 76.9 in 2021	72.3 in 1902	5 74.46 in 2005	5 35.00 in 1988
6 76.8 in 2019	6 72.4 in 1977	6 73.14 in 1995	6 36.19 in 1950
7 76.7 in 1997	72.4 in 1917	7 72.70 in 2022	7 38.50 in 1907
8 76.6 in 1994	8 72.5 in 1976	8 71.94 in 1969	8 39.88 in 2009
9 76.5 in 1995	72.5 in 1906	9 70.64 in 2003	9 41.68 in 1918
10 76.4 in 1991	10 72.8 in 1983	10 70.29 in 1968	10 41.72 in 1938
	72.8 in 1969		
	72.8 in 1940		
	72.8 in 1909		

Normal Temperature for the Year at FMY = 75.4°

Normal Rainfall for the Year at FMY = 57.41 inches

For more Climate information visit our web site at the following link:
<https://www.weather.gov/tampabay> and then go to the Climate and Past
 Weather drop down menu above the graphical forecast images.