



NOAA - National Weather Service

Tampa Bay Area

2525 14th Avenue SE, Ruskin, Florida 33570

813-645-2323 <https://weather.gov/tampabay>

April 2022 Climate Summary for West Central and Southwest Florida

Temperatures averaged near to a few degrees above normal for this month with a few sites ending up in the Top Ten Warmest for April.

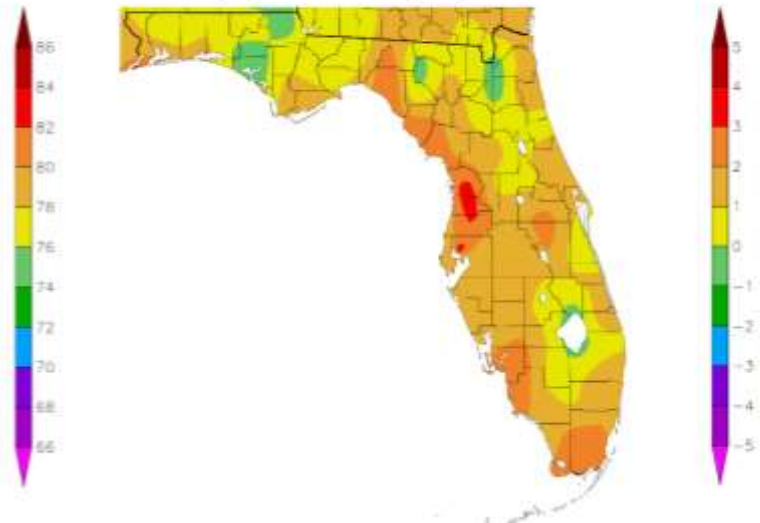
APRIL TEMPERATURE RANKINGS (°F) :

Location	April 2022 Rank	Avg Temp	Normal Apr Temp	Dep fm Normal	Records Began
Fort Myers Area	6th Warmest	77.5°	74.8°	+2.7°	Jan 1902
Tampa Area	3rd Warmest	76.9°	73.9°	+3.0°	Apr 1890
Winter Haven Area	13th Warmest (tie)	74.8°	73.8°	+1.0°	Mar 1941
Plant City	12th Warmest (tie)	74.7°	73.5°	+1.2°	Sep 1892
Lakeland Area	15th Warmest (tie)	74.7°	73.2°	+1.5°	Jan 1915
St Petersburg Area	29th Warmest (tie)	74.7°	74.1°	+0.6°	Aug 1914
Sarasota-Bradenton Area	8th Warmest (tie)	74.5°	72.6°	+1.9°	Jan 1911
Punta Gorda Area	23rd Warmest	74.4°	73.1°	+1.3°	May 1914
Venice	12th Warmest (tie)	73.7°	72.5°	+1.2°	May 1955
Bartow	37th Warmest (tie)	73.4°	72.5°	+0.9°	Jun 1892
Tarpon Springs	25th Warmest (tie)	73.2°	72.2°	+1.0°	Jan 1892
Wauchula 2 N	28th Warmest (tie)	72.6°	71.0°	+1.6°	Jan 1933
Brooksville Area	25th Warmest (tie)	72.4°	69.2°	+3.2°	Jan 1892
Inverness 3 SE	22nd Warmest	71.8°	68.5°	+3.3°	Jul 1948
Chiefland 5 ESE	11th Warmest	70.7°	68.4°	+2.3°	Jul 1956

Temperature (F)
4/1/2022 - 4/30/2022



Departure from Normal Temperature (F)
4/1/2022 - 4/30/2022

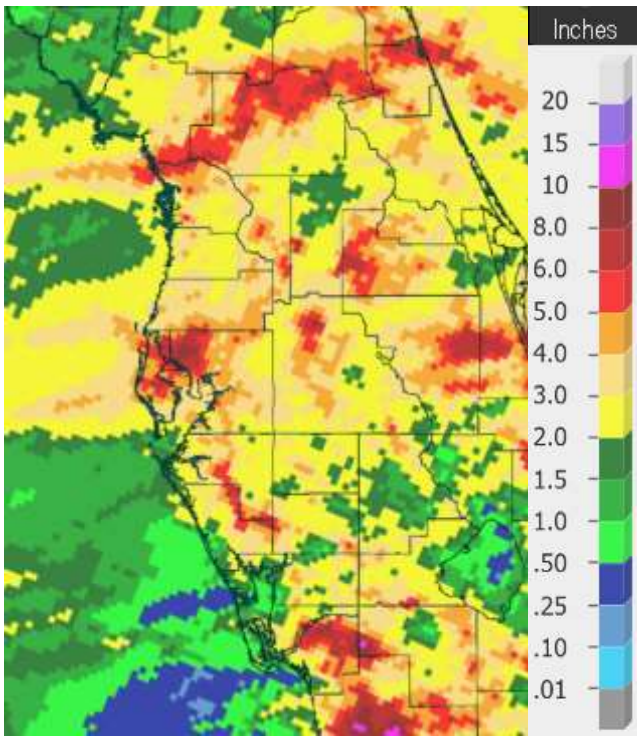


Graphics Source: NOAA Regional Climate Centers

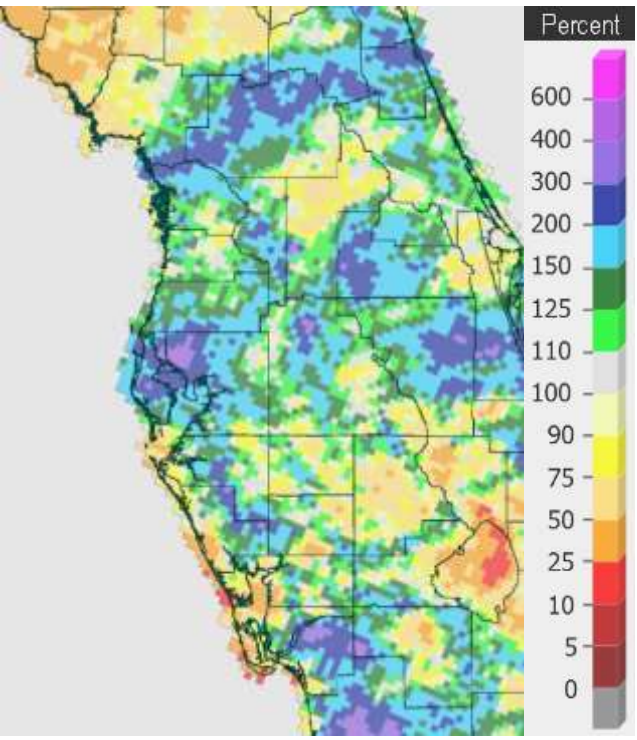
As far as rainfall, April is usually one of the drier months of the year, and in some parts of the area this was true. However, we did see a couple of cold fronts early in the month that brought widespread showers and thunderstorms to areas from around Interstate 4 northward. Then during the last few days of April, a more summer-like pattern setup with afternoon and evening sea breeze thunderstorms pushing some locations well above normal for the month.

APRIL RAINFALL (inches):

Location	Rank	April 2022 Rain Total	Normal Apr Rain	Dep fm Normal	Records Began
Tampa Area	4th Wettest	6.76	2.55	+4.21	Apr 1890
Fort Myers Area	5th Wettest	5.83	2.44	+3.39	Jan 1902
Inverness 3 SE	5th Wettest	5.49	2.69	+2.80	Jul 1948
St. Leo	15th Wettest	5.35	3.06	+2.29	Apr 1895
Tarpon Springs	17th Wettest (tie)	4.80	2.69	+2.11	Jan 1892
Winter Haven Area	11th Wettest	4.37	2.50	+1.87	Mar 1941
St. Petersburg Area	20th Wettest	4.15	1.93	+2.22	Aug 1914
Plant City	30th Wettest	3.98	2.88	+1.10	Jan 1893
Lakeland Area	26th Wettest	3.65	2.82	+0.83	Jan 1915
Wauchula 2 N	51st Driest	2.75	2.92	-0.17	Jan 1933
Chiefland 5 ESE	36th Driest	2.65	2.97	-0.32	Jul 1956
Bartow	73rd Driest	2.47	2.72	-0.25	Jun 1892
Sarasota-Bradenton Area	58th Driest	1.97	2.46	-0.49	Jan 1911
Venice	26th Driest	1.27	2.47	-1.20	May 1955
Punta Gorda Area	41st Driest	1.19	2.23	-1.04	May 1914



April 2022 Rainfall



Percent of Normal Rain

On the following pages are tables of the top ten warmest, coolest, wettest, and driest Aprils at some official NWS locations, which includes the average/total for this April where available, and the 1991-2020 average temperature and rainfall for the month of April.

CHIEFLAND 5 ESE (records began in July 1956):

Warmest Aprils	Coolest Aprils	Wettest Aprils	Driest Aprils
1 73.0 in 1991	1 63.4 in 1961	1 14.61 in 1982	1 0.00 in 1967
2 72.5 in 2002	2 64.8 in 2005	2 8.46 in 1997	2 0.30 in 1963
3 72.2 in 1999	3 64.9 in 2004	3 7.39 in 1995	3 0.31 in 1969
4 71.8 in 1970	4 65.0 in 1962	4 7.16 in 1985	4 0.42 in 2016
5 71.5 in 2020	5 65.3 in 1993	5 7.13 in 1991	5 0.79 in 1989
6 71.3 in 2017	6 65.5 in 2000	6 6.65 in 1957	6 0.80 in 2000
71.3 in 2011	7 65.6 in 2007	7 6.48 in 1983	7 0.88 in 2001
8 71.2 in 1911	8 66.4 in 1966	8 6.22 in 2005	0.88 in 1998
71.2 in 1965	9 66.6 in 1984	9 6.20 in 1961	9 0.91 in 1993
10 70.9 in 1994	10 66.9 in 1986	10 6.12 in 1979	0.91 in 1981
11 70.7 in 2022	66.9 in 1983
		29 2.65 in 2022	36 2.65 in 2022

Normal Temperature for April at CHIF1 = 68.4°

Normal Rainfall for April at CHIF1 = 2.97 in.

INVERNESS 3 SE (records began in July 1948):

Warmest Aprils	Coolest Aprils	Wettest Aprils	Driest Aprils
1 75.5 in 1954	1 64.8 in 1993	1 7.88 in 1953	1 0.00 in 1967
2 74.9 in 2015	2 66.1 in 2004	2 5.89 in 1991	2 0.06 in 2001
3 74.5 in 1968	3 66.2 in 2000	3 5.76 in 2011	3 0.07 in 1998
4 74.3 in 1967	4 66.3 in 2007	4 5.52 in 2021	4 0.20 in 1978
5 74.1 in 1965	5 66.4 in 1996	5 5.49 in 2022	5 0.26 in 1987
6 74.0 in 1970	6 66.8 in 2003	6 5.20 in 1997	6 0.31 in 1977
7 73.5 in 2002	66.8 in 1992	7 5.15 in 1959	0.31 in 1974
8 73.1 in 1969	8 67.1 in 1998	8 5.01 in 2018	8 0.65 in 1999
73.1 in 1963	9 67.3 in 1988	9 5.00 in 1982	9 0.73 in 1968
10 73.0 in 2020	10 67.4 in 1950	10 4.89 in 1984	10 0.76 in 1981
...			
22 71.8 in 2022			

Normal Temperature for April at INV1 = 68.5°

Normal Rainfall for April at INV1 = 2.69 in.

BROOKSVILLE AREA (records began in January 1892):

Warmest Aprils	Coolest Aprils	Wettest Aprils	Driest Aprils
1 75.5 in 1947	1 64.3 in 2005	1 14.49 in 1928	1 Trace in 2017
75.5 in 1945	64.3 in 2004	2 8.05 in 1900	Trace in 1967
75.5 in 1929	3 64.8 in 1901	3 7.54 in 1935	3 0.04 in 2001
4 75.2 in 2015	4 65.3 in 2000	4 7.41 in 1949	4 0.10 in 1903
5 74.5 in 1927	5 66.8 in 2007	5 7.38 in 1991	5 0.16 in 1977
6 74.4 in 1994	6 67.1 in 1950	6 6.92 in 1953	6 0.20 in 1981
7 74.0 in 1909	7 67.3 in 1892	7 6.48 in 1937	7 0.21 in 1932
8 73.9 in 2020	8 67.5 in 1998	8 6.39 in 1918	8 0.25 in 2006
9 73.8 in 1981	9 67.6 in 1926	9 6.33 in 1982	9 0.26 in 1998
10 73.7 in 2002	10 67.7 in 1952	10 6.20 in 1926	10 0.32 in 1896
73.7 in 1964			
73.7 in 1912			
...			
25 72.4 in 2022			
72.4 in 1963			
72.4 in 1958			
72.4 in 1955			

Normal Temperature for April at BKV = 69.2°

Total Rainfall for April 2022 = Rain missing on two days early in the month
Normal Rainfall for April at BKV = 2.18 in.

ST. LEO (records began in April 1895):

Warmest Aprils	Coolest Aprils	Wettest Aprils	Driest Aprils
1 76.8 in 1908	1 66.4 in 1931	1 15.55 in 1953	1 Trace in 1967
2 76.0 in 1954	2 66.7 in 1987	2 11.22 in 1928	2 0.06 in 1981
76.0 in 1947	66.7 in 1928	3 7.41 in 1937	0.06 in 1922
4 75.7 in 1945	4 67.7 in 1950	4 7.02 in 1997	4 0.09 in 2001
5 75.5 in 2015	67.7 in 1915	5 6.86 in 1991	5 0.11 in 1903
6 75.4 in 2002	67.7 in 1901	6 6.75 in 1949	6 0.12 in 1963
7 75.3 in 1994	7 68.0 in 1903	6.75 in 1941	7 0.13 in 2017
8 74.9 in 1991	8 68.4 in 1916	8 6.61 in 2018	8 0.20 in 1911
9 74.6 in 2006	9 68.6 in 1993	9 6.33 in 1895	9 0.21 in 1998
74.6 in 1999	10 68.7 in 1913	10 6.32 in 2020	10 0.23 in 1896
		...	
		15 5.35 in 2022	

Average Temperature for April 2022 = Not Available, Several Days Missing
Normal Temperature for April at STLF1 = 71.4°
Normal Rainfall for April at STLF1 = 3.06 in.

TARPON SPRINGS (records began in January 1892):

Warmest Aprils	Coolest Aprils	Wettest Aprils	Driest Aprils
1 76.5 in 2015	1 65.7 in 1987	1 7.63 in 1931	1 0.00 in 1967
2 76.4 in 1947	2 67.1 in 1915	2 7.20 in 1942	2 Trace in 1896
3 76.0 in 1991	3 67.2 in 1962	3 6.97 in 1949	3 0.05 in 1922
4 75.3 in 1945	4 67.4 in 1950	4 6.66 in 1928	4 0.07 in 1981
5 75.1 in 1994	67.4 in 1940	5 6.31 in 1953	0.07 in 1972
6 75.0 in 2020	6 67.5 in 1903	6 6.01 in 1957	6 0.08 in 1923
7 74.9 in 1948	7 67.8 in 1916	7 6.00 in 2020	7 0.16 in 1998
8 74.8 in 1922	8 67.9 in 1971	8 5.97 in 1933	8 0.18 in 1903
74.8 in 1912	67.9 in 1961	9 5.90 in 1959	9 0.20 in 2017
10 74.7 in 2002	67.9 in 1910	10 5.70 in 1941	10 0.23 in 1910
74.7 in 1929		...	
...		17 4.80 in 2022	
25 73.2 in 2022		4.80 in 1951	
73.2 in 1999			

Normal Temperature for April at TRPF1 = 72.2°

Normal Rainfall for April at TRPF1 = 2.69 in.

TAMPA AREA (records began in April 1890):

Warmest Aprils	Coolest Aprils	Wettest Aprils	Driest Aprils
1 78.0 in 2015	1 66.3 in 1987	1 10.71 in 1997	1 Trace in 1981
2 77.1 in 2017	2 66.7 in 1901	2 8.04 in 1920	Trace in 1967
3 76.9 in 2022	3 67.2 in 1993	3 7.23 in 1931	3 0.02 in 2001
4 76.8 in 1991	4 67.7 in 1950	4 6.76 in 2022	4 0.05 in 1969
5 76.6 in 1947	5 68.1 in 1903	5 6.73 in 2020	5 0.16 in 1922
6 76.4 in 1908	6 68.2 in 1899	6 6.59 in 1957	0.16 in 1898
7 76.3 in 2011	7 68.6 in 1983	7 6.14 in 1933	7 0.21 in 1963
76.3 in 2002	68.6 in 1961	8 5.75 in 1926	8 0.31 in 1892
9 76.0 in 1945	68.6 in 1915	9 5.48 in 1959	9 0.35 in 1938
10 75.4 in 2020	68.6 in 1891	10 5.38 in 1895	10 0.37 in 1946
75.4 in 2013			

Normal Temperature for April at TPA = 73.9°

Normal Rainfall for April at TRA = 2.55 in.

ST. PETERSBURG (records began in August 1914):

Warmest Aprils	Coolest Aprils	Wettest Aprils	Driest Aprils
1 78.6 in 2015	1 68.5 in 1950	1 9.73 in 1997	1 0.00 in 1967
2 77.0 in 2011	2 68.7 in 1987	2 9.09 in 1920	2 Trace in 1981
77.0 in 1947	3 68.9 in 1993	3 8.45 in 1951	3 0.01 in 1974
4 76.9 in 2002	4 69.2 in 1952	4 7.69 in 1933	4 0.04 in 2001
5 76.6 in 1991	5 69.3 in 1983	5 7.39 in 1957	5 0.07 in 1987
6 76.5 in 2020	6 70.1 in 1916	6 7.20 in 2003	6 0.11 in 1998
76.5 in 2013	7 70.2 in 1915	7 6.16 in 1960	7 0.24 in 1932
8 76.1 in 1929	8 70.4 in 1951	8 6.09 in 1948	8 0.25 in 1977
9 76.0 in 1981	9 70.6 in 1931	9 5.81 in 1931	9 0.27 in 2006
76.0 in 1954	10 70.8 in 1996	10 5.46 in 1941	0.27 in 1963
76.0 in 1922	70.8 in 1961	...	
...		20 4.15 in 2022	89 4.15 in 2022
29 74.7 in 2022	77 74.7 in 2022		
74.7 in 2018	74.7 in 2018		

Normal Temperature for April at SPG = 74.1°

Normal Rainfall for April at SPG = 1.93 in.

PLANT CITY (Temperature records began in Sep 1892 and
Rainfall records began in Jan 1893):

Warmest Aprils	Coolest Aprils	Wettest Aprils	Driest Aprils
1 77.2 in 2020	1 65.0 in 1901	1 7.29 in 1931	1 0.00 in 2001
2 76.9 in 2015	2 65.5 in 1987	2 7.13 in 1957	0.00 in 1981
3 76.1 in 1947	3 65.9 in 1931	3 7.11 in 1933	0.00 in 1967
4 75.9 in 1912	4 67.4 in 1932	4 6.56 in 1928	4 0.16 in 1987
5 75.8 in 1911	5 67.6 in 1983	5 6.53 in 1941	5 0.20 in 1923
6 75.7 in 1945	67.6 in 1902	6 6.40 in 1937	0.20 in 1911
7 75.6 in 2011	7 67.7 in 2005	7 6.36 in 1947	7 0.26 in 1938
8 75.5 in 1991	8 67.9 in 1993	8 6.06 in 1997	8 0.27 in 1963
9 75.3 in 2017	9 68.0 in 1940	9 6.00 in 1951	9 0.31 in 1977
10 75.2 in 2019	10 68.2 in 1925	10 5.78 in 1959	10 0.32 in 1898
11 74.8 in 1954	
12 74.7 in 2022		30 3.98 in 2022	93 3.98 in 2022
74.7 in 1970		3.98 in 1992	3.98 in 1992

Normal Temperature for April at PLCF1 = 73.5°

Normal Rainfall for April at PLCF1 = 2.88 in.

LAKELAND AREA (records began in January 1915):

Warmest Aprils	Coolest Aprils	Wettest Aprils	Driest Aprils
1 77.2 in 2015	1 67.3 in 1950	1 8.48 in 1959	1 0.00 in 1967
2 76.6 in 2020	2 68.3 in 2005	2 8.36 in 1939	2 0.04 in 2001
3 76.5 in 1991	68.3 in 1952	3 8.35 in 1934	3 0.05 in 1963
4 76.3 in 1994	4 68.5 in 1987	4 8.15 in 1951	4 0.09 in 1981
5 76.2 in 1922	5 68.6 in 1961	5 7.71 in 1928	5 0.22 in 1977
6 76.1 in 2011	68.6 in 1951	6 6.84 in 1997	6 0.25 in 1922
7 75.8 in 1947	7 68.7 in 2007	7 6.77 in 1957	7 0.42 in 1972
8 75.6 in 1945	8 68.9 in 1973	8 6.66 in 1920	0.42 in 1969
9 75.4 in 1929	9 69.0 in 1983	9 5.82 in 1926	9 0.43 in 1932
10 75.2 in 2002	10 69.5 in 1931	10 5.60 in 1941	10 0.44 in 1945
11 75.1 in 2013	69.5 in 1915
75.1 in 1995		26 3.65 in 2022	83 3.65 in 2022
13 74.9 in 2017			
74.9 in 1954			
15 74.7 in 2022			

Normal Temperature for April at LLDF1 = 73.2°

Normal Rainfall for April at LLDF1 = 2.82 in.

WINTER HAVEN AREA (records began in March 1941):

Warmest Aprils	Coolest Aprils	Wettest Aprils	Driest Aprils
1 78.6 in 2015	1 67.0 in 1987	1 7.36 in 1951	1 0.00 in 1981
2 77.8 in 1947	2 68.5 in 1983	2 7.29 in 1941	0.00 in 1967
3 77.5 in 1991	68.5 in 1973	3 6.51 in 2008	3 0.18 in 1963
4 77.1 in 1945	4 69.0 in 1961	4 6.34 in 1957	4 0.28 in 1946
5 76.6 in 2002	5 69.1 in 1971	5 5.55 in 1947	5 0.46 in 1952
6 76.3 in 2011	6 69.7 in 2005	6 5.30 in 1960	6 0.51 in 2017
7 76.0 in 2020	69.7 in 1962	7 5.11 in 1997	7 0.56 in 2001
8 75.8 in 1994	8 69.9 in 1993	8 5.01 in 1959	8 0.61 in 1978
9 75.7 in 1948	9 70.0 in 1951	9 4.42 in 2018	9 0.62 in 1968
10 75.1 in 2019	10 70.1 in 2004	4.42 in 1991	10 0.64 in 1986
11 75.0 in 2017		11 4.37 in 2022	
75.0 in 1989			
13 74.8 in 2022			
74.8 in 2006			
74.8 in 1970			

Normal Temperature for April at GIF = 73.8°

Normal Rainfall for April at GIF = 2.50 in.

BARTOW (records began in June 1892):

Warmest Aprils	Coolest Aprils	Wettest Aprils	Driest Aprils
1 78.7 in 1908	1 65.9 in 1926	1 9.70 in 1920	1 0.00 in 1967
2 77.2 in 1945	2 66.3 in 1901	2 8.40 in 1951	2 Trace in 2000
3 76.1 in 1991	3 66.9 in 1915	3 6.89 in 1941	Trace in 1907
4 76.0 in 1999	4 67.3 in 1928	4 6.69 in 1934	4 0.04 in 1922
76.0 in 1947	5 68.0 in 1913	5 6.43 in 1937	5 0.11 in 1981
76.0 in 1922	6 68.1 in 1987	6 6.14 in 1935	6 0.17 in 1938
7 75.9 in 2014	7 68.4 in 1950	7 6.12 in 1954	7 0.20 in 1987
8 75.7 in 1965	68.4 in 1931	6.12 in 1895	8 0.21 in 2006
9 75.6 in 2002	9 68.8 in 1952	9 5.94 in 1933	9 0.28 in 2001
10 75.6 in 1954	10 68.9 in 1937	10 5.87 in 1991	10 0.34 in 1919
...
37 73.4 in 2022	77 73.4 in 2022	56 2.47 in 2022	73 2.47 in 2022
73.4 in 2003	73.4 in 2003		
73.4 in 1989	73.4 in 1989		
73.4 in 1935	73.4 in 1935		
73.4 in 1909	73.4 in 1909		

Normal Temperature for April at BARF1 = 72.5°

Normal Rainfall for April at BARF1 = 2.72 in.

SARASOTA-BRADENTON AREA (records began in January 1911):

Warmest Aprils	Coolest Aprils	Wettest Aprils	Driest Aprils
1 75.9 in 2015	1 65.9 in 1987	1 10.23 in 1957	1 0.00 in 1967
75.9 in 1945	2 67.0 in 1916	2 9.82 in 1920	2 Trace in 2017
3 75.2 in 2020	3 67.1 in 1915	3 8.78 in 1997	3 0.01 in 1923
4 75.1 in 1994	4 67.5 in 1931	4 7.36 in 2020	4 0.03 in 1981
5 75.0 in 2017	5 67.8 in 1986	5 7.22 in 1933	5 0.08 in 1963
6 74.9 in 1947	6 68.3 in 2005	6 7.09 in 1951	6 0.10 in 1998
7 74.6 in 2002	68.3 in 1950	7 5.55 in 1930	7 0.10 in 1922
8 74.5 in 2022	8 68.4 in 1993	8 5.11 in 1953	8 0.14 in 2006
74.5 in 1954	9 68.5 in 1971	9 4.87 in 1916	0.14 in 2001
10 74.4 in 2013	68.5 in 1940	10 4.85 in 1960	10 0.15 in 1938
	
		55 1.97 in 2022	58 1.97 in 2022

Normal Temperature for April at SRQ = 72.6°

Normal Rainfall for April at SRQ = 2.46 in.

VENICE (records began in May 1955):

Warmest Aprils	Coolest Aprils	Wettest Aprils	Driest Aprils
1 76.9 in 2015	1 65.5 in 1987	1 13.85 in 1957	1 0.00 in 1967
2 76.2 in 2011	2 68.0 in 1986	2 7.86 in 1997	2 0.06 in 1975
3 76.1 in 1994	3 68.5 in 1993	3 6.10 in 1962	3 0.07 in 1987
4 75.9 in 2013	4 68.6 in 2005	4 5.20 in 1993	0.07 in 1978
5 75.5 in 2002	5 68.8 in 1983	5 5.18 in 1984	5 0.09 in 1963
6 75.0 in 2020	68.8 in 1962	6 5.09 in 1991	6 0.15 in 2006
7 74.5 in 2017	7 69.0 in 1988	7 4.51 in 2013	7 0.16 in 2001
74.5 in 1999	8 69.3 in 1984	4.51 in 1982	8 0.17 in 1970
9 74.4 in 2012	9 69.4 in 2007	9 4.12 in 1966	9 0.18 in 1999
10 74.3 in 2019	10 69.6 in 1956	10 4.01 in 2004	10 0.24 in 1972
11 74.2 in 2010	
12 73.7 in 2022		42 1.27 in 2022	26 1.27 in 2022
73.7 in 1995			
73.7 in 1965			

Normal Temperature for April at VNCF1 = 72.5°

Normal Rainfall for April at VNCF1 = 2.47 in.

MYAKKA RIVER STATE PARK (Temperature records began in March 1956
and Rainfall records began in Sep 1943):

Warmest Aprils	Coolest Aprils	Wettest Aprils	Driest Aprils
1 77.0 in 2015	1 66.5 in 1987	1 8.93 in 1997	1 0.00 in 2001
2 76.0 in 1999	2 67.8 in 1962	2 7.85 in 1993	2 Trace in 1981
3 75.7 in 1994	3 68.0 in 1961	3 7.10 in 1954	3 0.02 in 1987
4 74.8 in 1982	4 68.3 in 2005	4 7.02 in 1948	4 0.04 in 1946
5 74.7 in 2013	5 68.4 in 1986	5 6.82 in 1957	5 0.10 in 2006
74.7 in 2011	6 68.7 in 1973	6 6.54 in 2020	6 0.12 in 1970
74.7 in 1981	7 69.2 in 2004	7 6.22 in 1951	7 0.15 in 1978
8 74.4 in 2002	8 69.3 in 1971	8 5.58 in 1995	8 0.20 in 1998
74.4 in 1970	9 69.7 in 1983	9 5.17 in 2008	9 0.33 in 1971
10 74.2 in 1979	10 70.0 in 1963	10 5.05 in 1982	10 0.43 in 1950

Average Temperature for April 2022 = Not Available Yet

Normal Temperature for April at MKCF1 = 72.5°

Total Rainfall for April 2022 = Not Available Yet

Normal Rainfall for April at MKCF1 = 2.98 in.

WAUCHULA 2 N (records began in January 1933):

Warmest Aprils	Coolest Aprils	Wettest Aprils	Driest Aprils
1 77.2 in 1945	1 65.7 in 1950	1 8.26 in 1951	1 0.00 in 2001
2 76.3 in 1947	2 66.7 in 1993	2 7.75 in 1947	0.00 in 1978
3 75.4 in 2015	66.7 in 1987	3 6.94 in 1962	0.00 in 1967
4 74.8 in 1968	4 66.8 in 2004	4 6.60 in 1995	4 0.03 in 1963
5 74.7 in 1991	5 67.6 in 1983	5 6.55 in 1953	5 0.05 in 1971
6 74.5 in 1970	6 67.9 in 1952	6 6.44 in 1992	6 0.08 in 1981
7 74.4 in 1975	7 68.1 in 1951	7 6.36 in 1934	7 0.13 in 1970
8 74.2 in 1965	8 68.3 in 2000	8 6.16 in 2021	8 0.16 in 1987
9 74.1 in 2020	9 68.5 in 2007	9 5.95 in 1997	9 0.22 in 1945
74.1 in 1982	68.5 in 1997	10 5.44 in 1933	10 0.23 in 1975
74.1 in 1939	
...		35 2.75 in 2022	51 2.75 in 2022
28 72.6 in 2022	55 72.6 in 2022	2.75 in 1983	2.75 in 1983
72.6 in 1936	72.6 in 1936		
72.6 in 1933	72.6 in 1933		

Normal Temperature for April at WAUF1 = 71.0°

Normal Rainfall for April at WAUF1 = 2.92 in.

ARCHBOLD BIO STN (records began in January 1969):

Warmest Aprils	Coolest Aprils	Wettest Aprils	Driest Aprils
1 76.6 in 2015	1 63.0 in 1987	1 9.53 in 2021	1 0.03 in 2006
2 75.0 in 2020	2 66.4 in 1986	2 5.90 in 1972	2 0.08 in 1971
3 74.8 in 1991	3 66.7 in 2004	3 5.65 in 2015	3 0.16 in 1981
4 74.4 in 2011	4 66.9 in 1993	4 5.47 in 1997	4 0.19 in 1970
5 74.1 in 1994	5 67.4 in 2005	5 5.37 in 2013	5 0.21 in 1986
6 73.7 in 1982	67.4 in 1983	6 4.91 in 1992	6 0.42 in 2016
7 73.5 in 1975	7 67.7 in 2000	7 4.90 in 1973	7 0.43 in 1978
8 73.4 in 2013	8 68.6 in 1971	8 4.15 in 1982	8 0.52 in 1987
9 73.1 in 2017	9 68.7 in 1992	9 4.10 in 2004	9 0.59 in 2009
10 73.0 in 2002	10 68.8 in 2007	10 3.90 in 1970	10 0.69 in 1977
73.0 in 1981	68.8 in 1984		

Average Temperature for April 1-26, 2022 = 72.5°

Normal Temperature for April at ACHF1 = 71.7°

Total Rainfall for April 1-26, 2022 = 1.55 inches

Normal Rainfall for April at ACHF1 = 2.54 in.

PUNTA GORDA AREA (records began in May 1914):

Warmest Aprils	Coolest Aprils	Wettest Aprils	Driest Aprils
1 78.7 in 1945	1 67.9 in 1987	1 8.70 in 1920	1 0.00 in 1981
2 78.2 in 1947	2 68.7 in 1915	2 7.93 in 1957	0.00 in 1963
3 76.9 in 1944	3 69.1 in 2004	3 7.08 in 1931	0.00 in 1946
4 76.6 in 2015	69.1 in 1916	4 5.80 in 1994	4 Trace in 1975
76.6 in 1994	5 69.2 in 2005	5 5.52 in 1941	Trace in 1967
6 76.1 in 1954	6 69.7 in 1971	6 5.36 in 1947	6 0.03 in 1922
7 76.0 in 1991	7 70.0 in 1993	7 5.20 in 1933	7 0.05 in 2006
76.0 in 1946	70.0 in 1986	8 5.15 in 1997	8 0.09 in 1970
9 75.9 in 1948	9 70.1 in 2000	9 5.08 in 1965	9 0.10 in 2001
10 75.8 in 2013	10 70.2 in 1950	5.08 in 1948	10 0.11 in 1987
...	
23 74.4 in 2022		64 1.19 in 2022	41 1.19 in 2022

Normal Temperature for April at PGD = 73.1°

Normal Rainfall for April at PGD = 2.23 in.

FORT MYERS AREA (records began in January 1902):

Warmest Aprils	Coolest Aprils	Wettest Aprils	Driest Aprils
1 79.2 in 2020	1 68.5 in 1950	1 8.42 in 1939	1 Trace in 1970
2 78.8 in 2015	2 68.8 in 1987	2 7.66 in 1941	Trace in 1967
3 77.7 in 2011	3 69.3 in 1915	3 6.06 in 1933	Trace in 1903
77.7 in 1991	4 69.6 in 1903	4 5.89 in 1930	4 0.01 in 2006
77.7 in 1947	5 70.1 in 1983	5 5.83 in 2022	0.01 in 1946
6 77.5 in 2022	70.1 in 1910	6 5.68 in 1994	6 0.02 in 1922
7 77.4 in 1994	7 70.2 in 1952	7 5.61 in 1916	7 0.08 in 1981
8 77.3 in 1908	8 70.4 in 1971	8 5.50 in 1949	0.08 in 1950
9 76.9 in 2018	9 70.6 in 1931	9 5.34 in 1995	9 0.11 in 1974
76.9 in 2013	10 70.8 in 2005	10 5.01 in 1991	10 0.14 in 1987
76.9 in 2002	70.8 in 1993		
76.9 in 1945	70.8 in 1961		
	70.8 in 1907		
	70.8 in 1902		

Normal Temperature for April at FMY = 74.8°

Normal Rainfall for April at FMY = 2.44 in.

For more Climate information visit our web site at the following link:
<https://www.weather.gov/tampabay> and then go to the Climate and Past Weather drop down menu above the graphical forecast images.