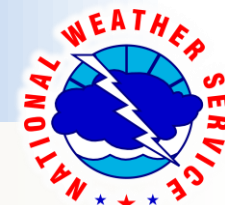


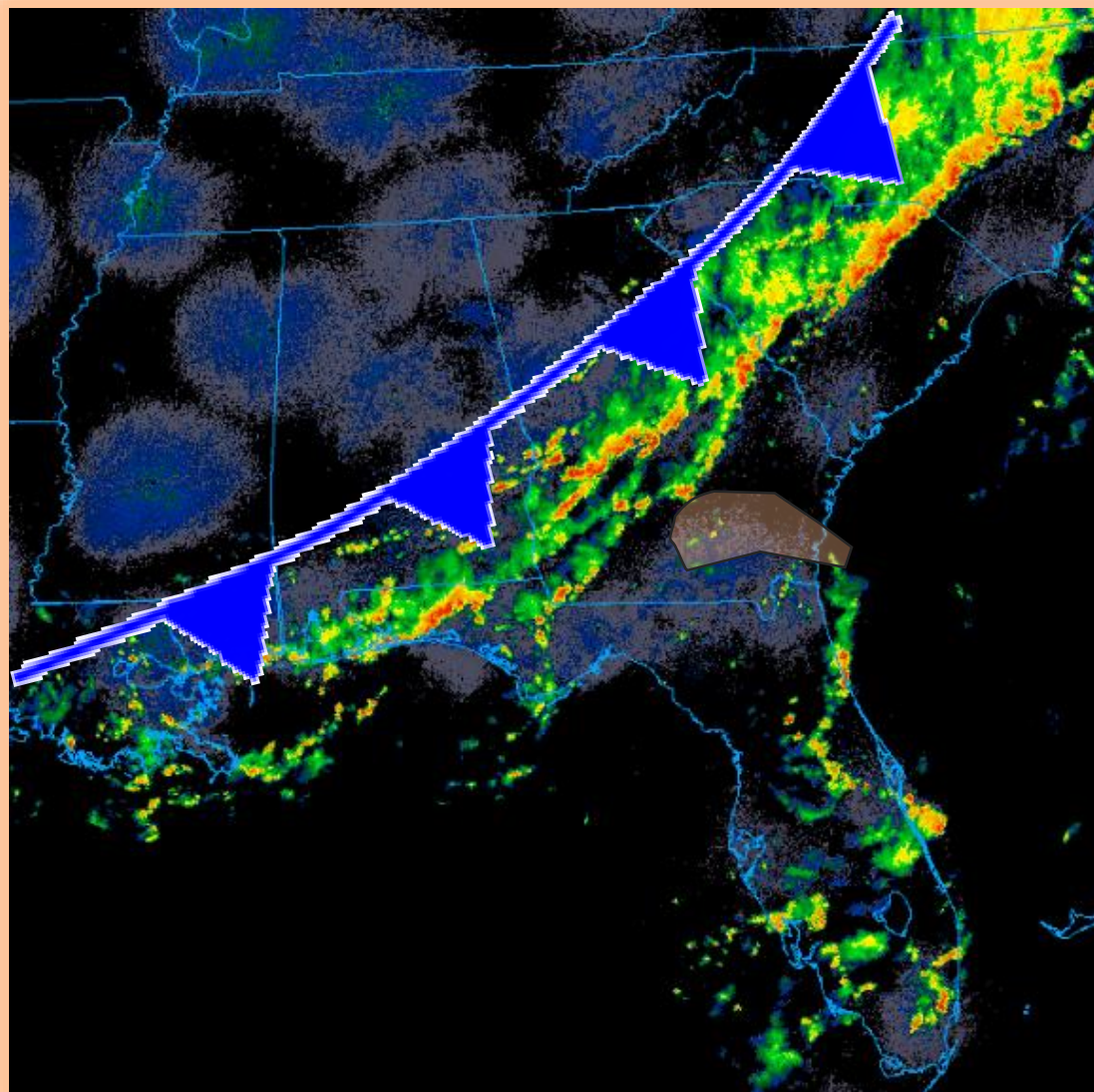
Weather Impact Overview

Southeast Georgia & Northeast Florida



Isolated Severe T'Storms Across Southeast GA this evening

- ✓ Isolated strong to severe storms SE GA as cold front approaches the region
- ✓ Main hazards:
Damaging Wind Gusts 40-60 mph, frequent lightning & downpours
- ✓ Storm Motion SE GA this evening: To the East at 20-30 mph



Isolated Severe Thunderstorms

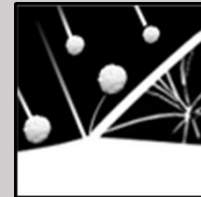
Timing & Threat Area of Strongest Storms



Hazards



Damaging Wind Gusts
50-60 mph



Small Hail
Hail < 1 inch

Actions

- ✓ **Monitor for Warnings**
- ✓ **Shelter indoors, away from windows if in Warning**

Severe Thunderstorm: A storm capable of producing winds ≥ 58 mph & hail ≥ 1 inch

Late Season Cold front

Southeast Georgia & Northeast Florida



Widespread Rainfall Wednesday & Thursday

- Rainfall totals of 2-3 inches, locally higher amounts
- Potential for localized flooding possible, especially in urban areas



Scattered to Numerous T'Storms Friday & Saturday

- Strong to Isolated Severe Afternoon T'Storms Possible East of U.S. Highway 301
- Weak Gulf Low Friday may enhance heavy rainfall potential



Moderate Rip Current Risk at Northeast FL Beaches

Heavy Rainfall on Wednesday and Thursday

Summertime Cold Front Brings Widespread 2-3 Inch Totals

Weather Forecast Office

Jacksonville, FL

Issued Jul 23, 2019 4:45 AM EDT

