



High Wind Event Through Wednesday

May 6, 2024

4:49 AM

High Wind Headlines

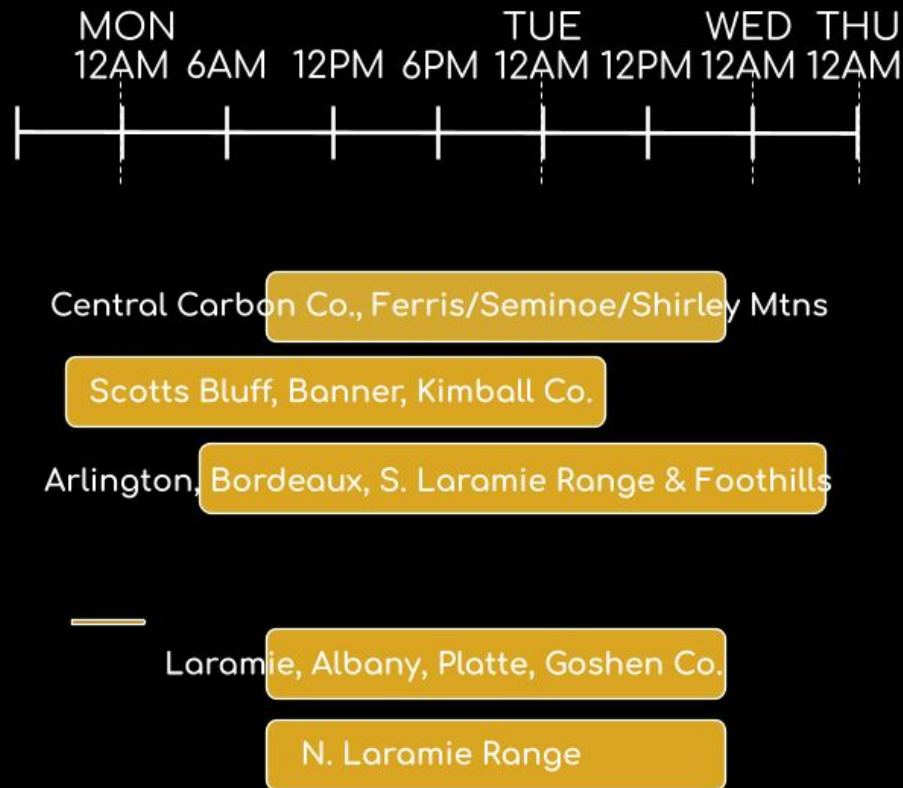
Key Messages

- **High Wind Warnings** for Scotts Bluff, Banner and Kimball Counties until 6 AM Tuesday.
- **High Wind Warning** for Arlington, Bordeaux and the I-80 Summit until 6 PM Wednesday.
- **High Wind Warnings** for most of southeast Wyoming until 9 PM Tuesday including Cheyenne, Laramie, Wheatland, Torrington and Rawlins.
- Wind gusts could exceed 60 to 80 mph in the wind prone corridors.



A prolonged period of high winds is expected across the area. Gusts over 70 MPH possible.

High Wind Timeline:



National Weather Service
Cheyenne Wyoming



WIDESPREAD HIGH WINDS



NWS Cheyenne

3:43 PM

Issued: May 5, 2024



National Oceanic and Atmospheric Administration
U.S. Department of Commerce

National Weather Service
Cheyenne, Wyoming



Winter Weather Through Today

May 6, 2024
4:49 AM

Winter Weather Headlines

Key Messages

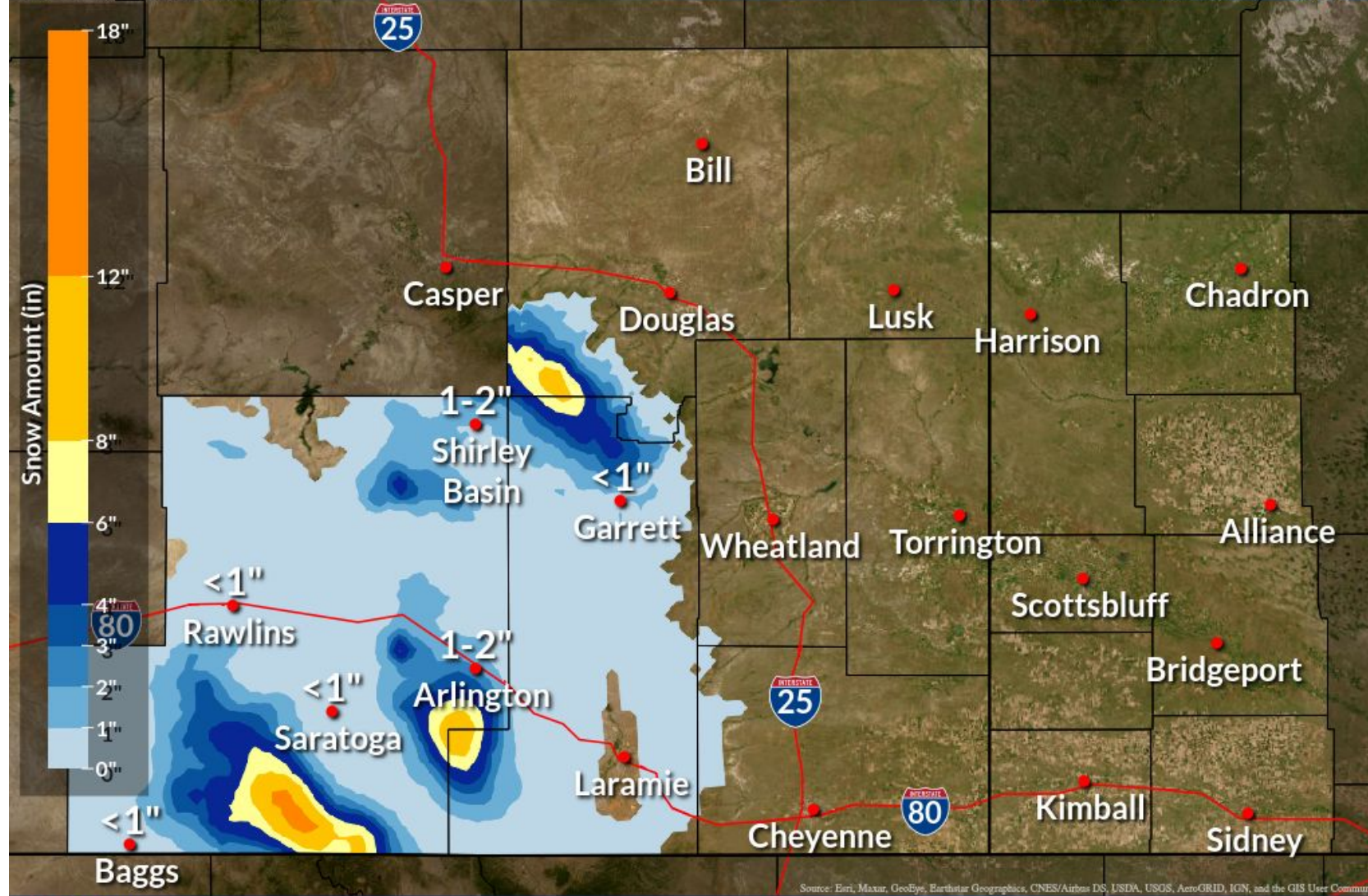
- **Winter Weather Advisory** for the Snowy Range and North Laramie Range through this afternoon.
- **Winter Storm Warning** for the Sierra Madre Range through this afternoon.

Storm Total Snowfall Amounts

Until Late Monday Night

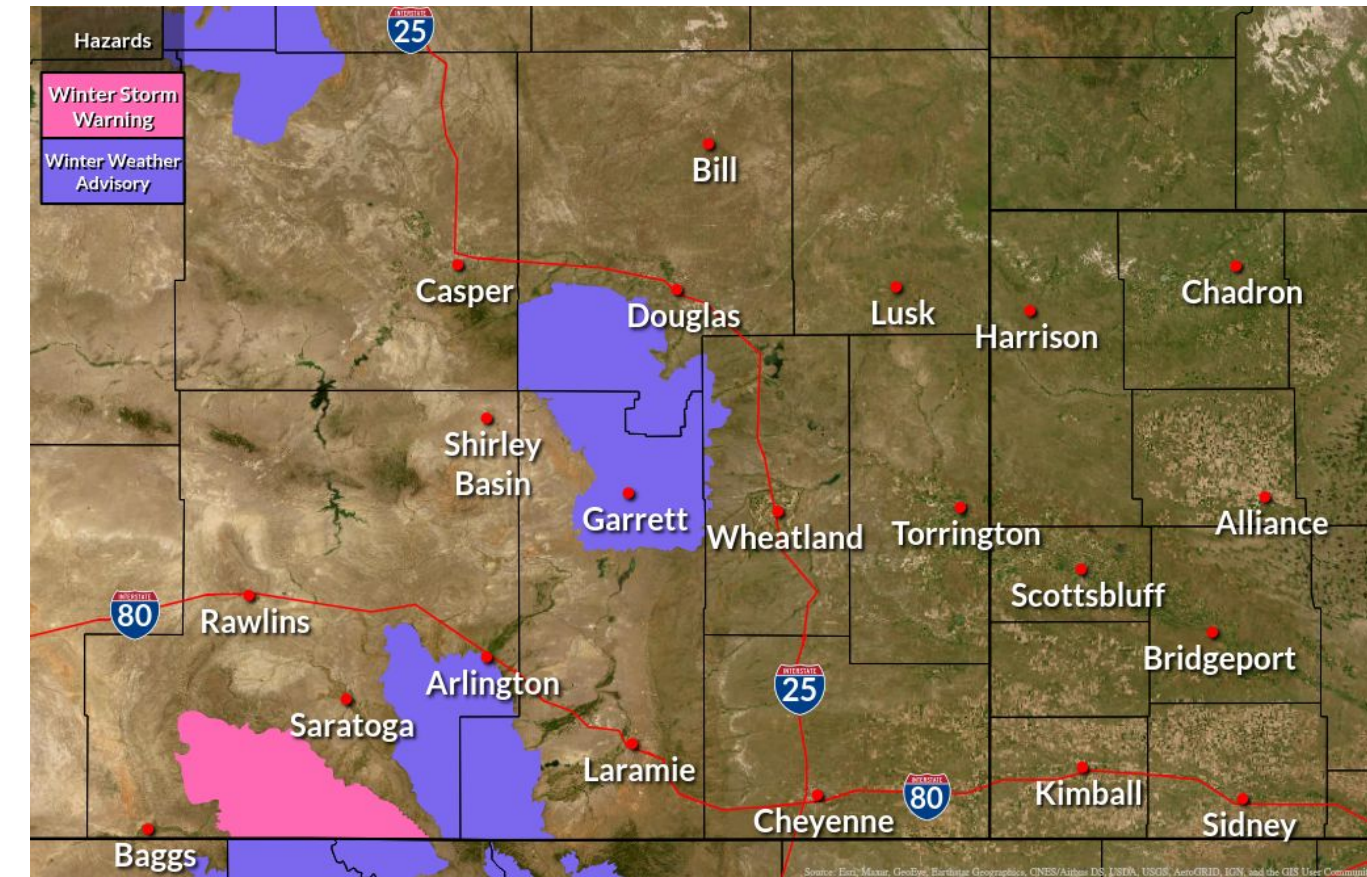
Weather Forecast Office
Cheyenne, WY

Issued May 06, 2024 4:24 AM MDT



f t v NWSCheyenne

weather.gov/cys



National Oceanic and
Atmospheric Administration
U.S. Department of Commerce

National Weather Service
Cheyenne, Wyoming



Maximum Wind Gusts for Wind-Prone Sites

May 6, 2024
4:49 AM

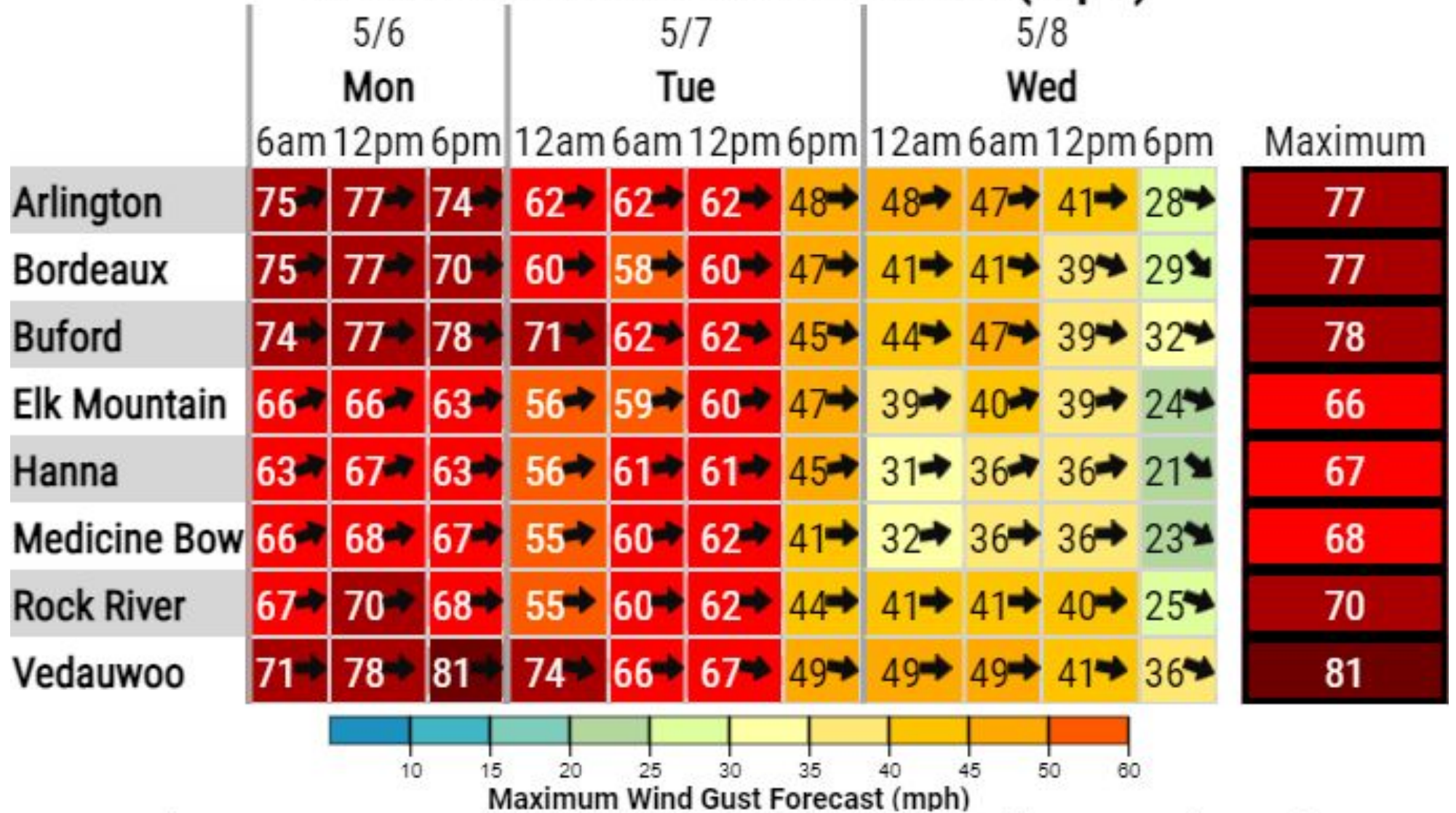
Timeline of maximum wind gusts through Wednesday morning

For wind-prone locations, the strongest winds will be today and tonight, with gusts of 70 to 80 mph likely. This includes portions of Interstates 25 near Bordeaux and 80 near Arlington.

Strong westerly cross winds will be hazardous to light weight or high profile vehicles, especially along I-25 from Glendo to Cheyenne.

Strong winds may linger through Tuesday into early Wednesday morning for wind-prone locations.

Maximum Wind Gust Forecast (mph)



Created: 4 am MDT Mon 5/6/2024 | Values are maximums over the period beginning at the time shown.



Maximum Wind Gusts for Selected Cities

May 6, 2024
4:49 AM

Timeline of maximum wind gusts through Wednesday morning

For selected cities, the strongest wind gusts of 60 to 70 mph will be likely today and tonight.

Southerly winds early today will turn westerly late this morning and quickly strengthen.

Fasten loose objects prior to the onset of strong winds.

Maximum Wind Gust Forecast (mph)

	5/6 Mon			5/7 Tue				5/8 Wed	
	6am	12pm	6pm	12am	6am	12pm	6pm	12am	Maximum
Alliance	48➔	51➔	47➔	35➔	45➔	46➔	29➔	23➔	51
Chadron	48↑	47➔	40➔	33➔	41➔	41➔	28➔	17➔	48
Cheyenne	56➔	63➔	62➔	48➔	55➔	55➔	41➔	37➔	63
Douglas	53➔	55➔	51➔	41➔	49➔	49➔	37➔	23➔	55
Laramie	55➔	62➔	62➔	52➔	59➔	59➔	39➔	24➔	62
Lusk	51➔	55➔	44➔	38➔	47➔	48➔	25➔	23➔	55
Rawlins	60➔	62➔	60➔	54➔	60➔	60➔	45➔	37➔	62
Scottsbluff	51➔	52➔	53➔	41➔	47➔	49➔	39➔	25➔	53
Sidney	40➔	41➔	40➔	37➔	47➔	47➔	33➔	25➔	47
Torrington	47➔	53➔	51➔	41➔	47➔	48➔	32➔	29➔	53



Created: 4 am MDT Mon 5/6/2024 | Values are maximums over the period beginning at the time shown.

Additional Resources:



[Latest Version of the Briefing Packet](#)



[Latest Updated Hazard Information](#)



[Radar Imagery](#)



[Recent Snowfall Reports](#)



[Live-updating Point Forecast](#)
Click on the map to select your location, or use the search bar to type in your city name or coordinates



Departments of Transportation
[WYDOT](#) / [NEDOT](#) / Dial 5-1-1



[NWS Cheyenne Probabilistic Snow](#)



[Graphical Hazardous Weather Outlook](#)



[NWS Winter Safety](#)



Strong winds/cross winds can be a hazard to light and high-profile vehicles.

I-25 CLOSED TO LIGHT HIGH PROFILE VEHICLES
WIND GUSTS 55+ MPH

**STRONG WIND
Can Impact
Travel**



Have Questions? Contact Us!



307-772-2468 or 1-800-269-6220



@NWSCheyenne



nws.cheyenne@noaa.gov



US National Weather Service Cheyenne