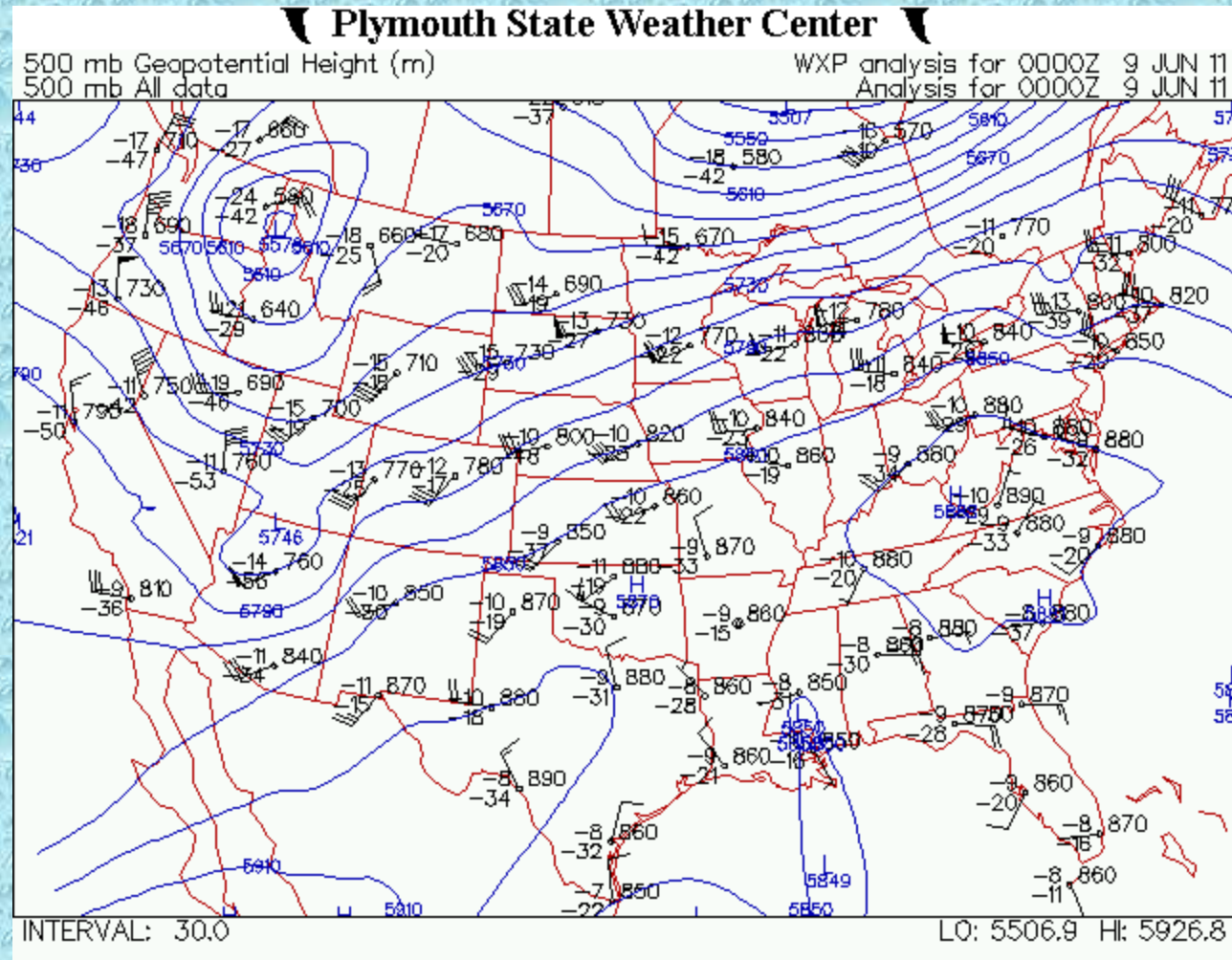




Severe Weather Case Study:  
June 9, 2011  
Nocturnal Convection

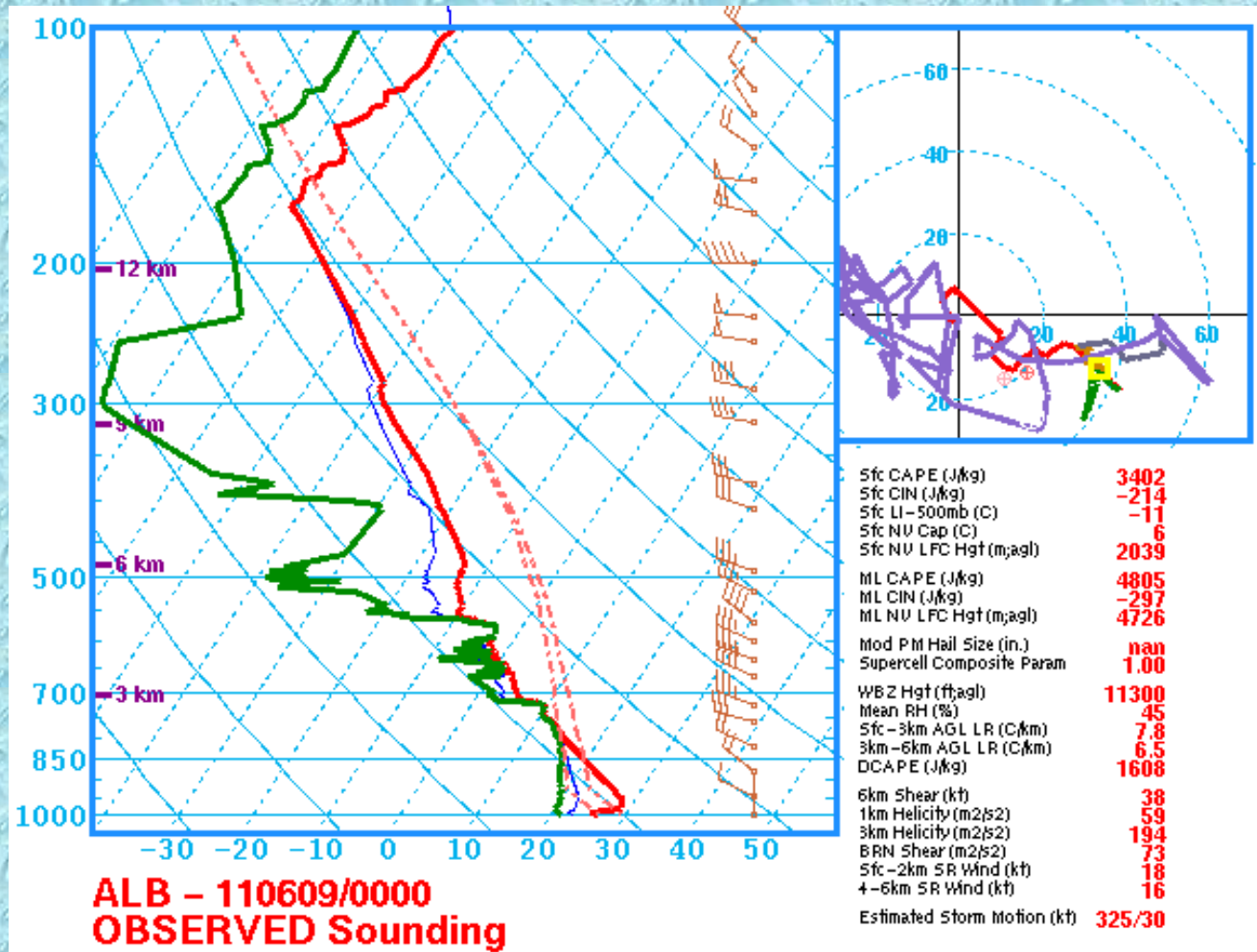
# 500 mb Analysis: 00z June 9

- Ridge centered over the Appalachians
- Shortwave trough moving through the region
- Jet streak near BUF
- Temperatures around -10C



# Albany 00z June 9 Sounding

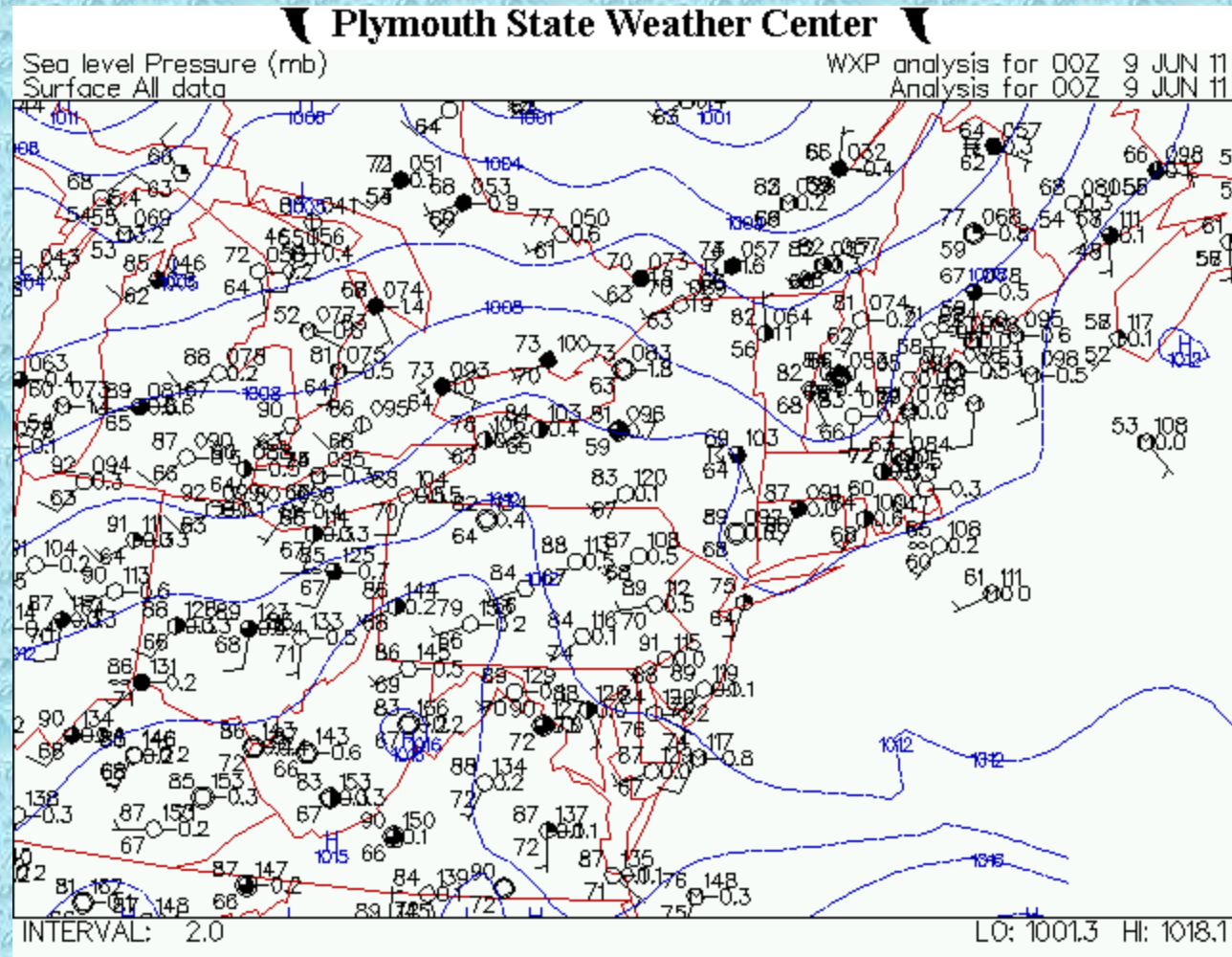
- “Inverted V” sounding favors downdraft potential
- High CAPE (3426 J/kg)
- Unidirectional winds increasing with height favor linear convection
- Precipitable water around 1.92 inches





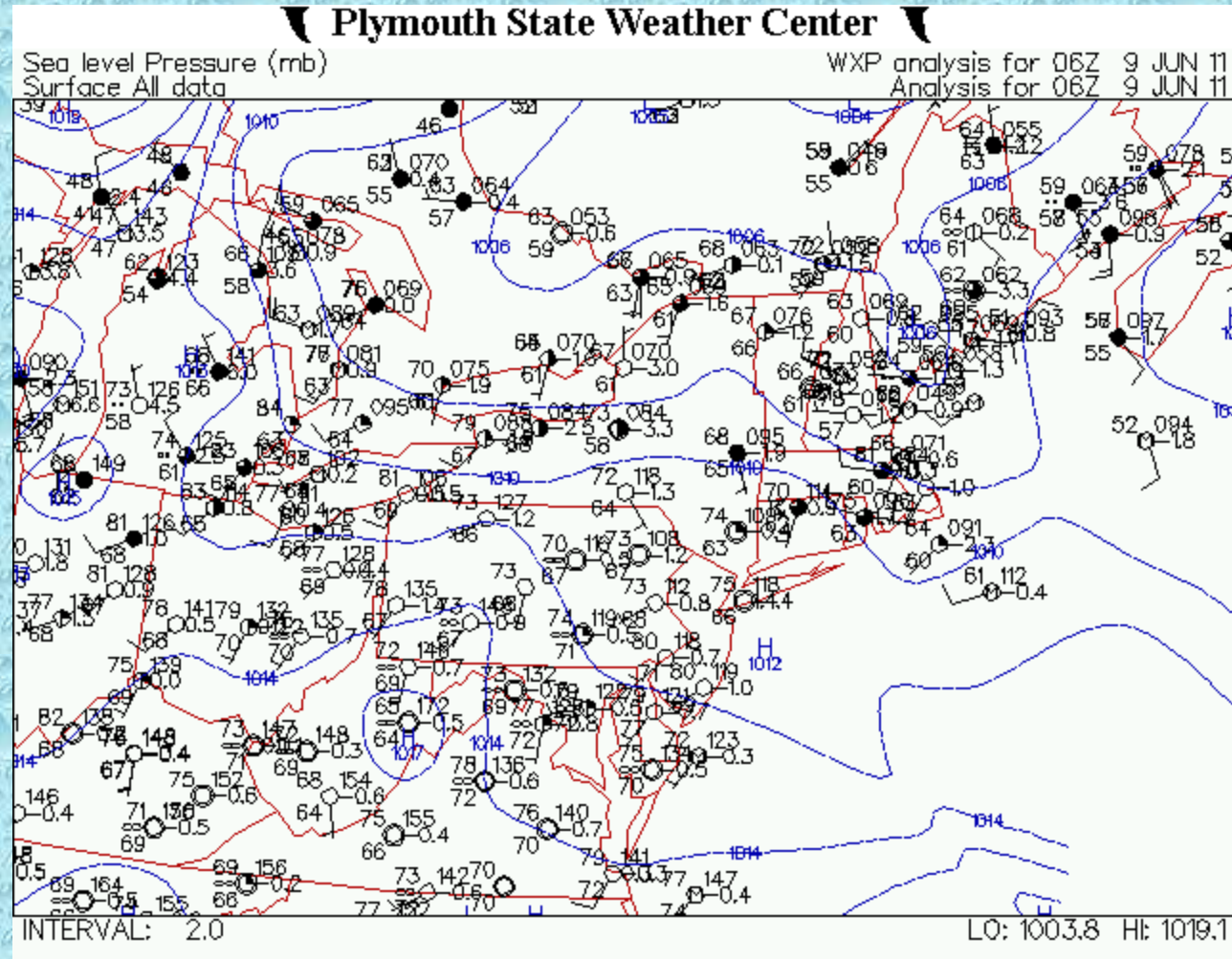
# Surface Analysis: 00z June 9

- Weak surface trough in western New England
- Temperatures in the 80s with dew points in the mid to upper 60s

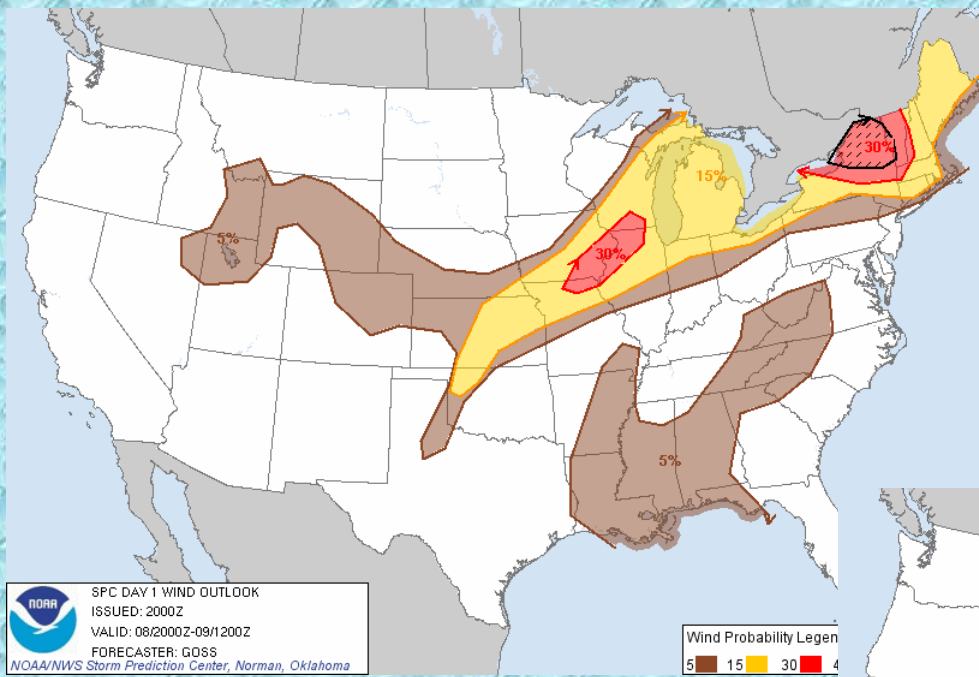



# Surface Analysis: 06z June 9

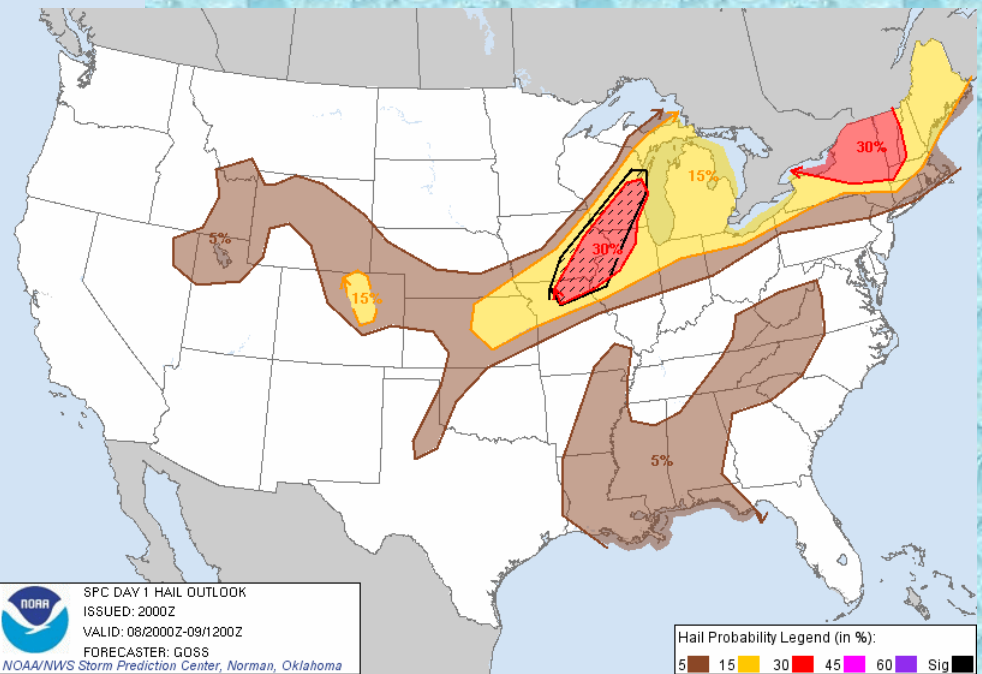
- First trough was moving offshore




# SPC Day 1 Outlook: 20Z



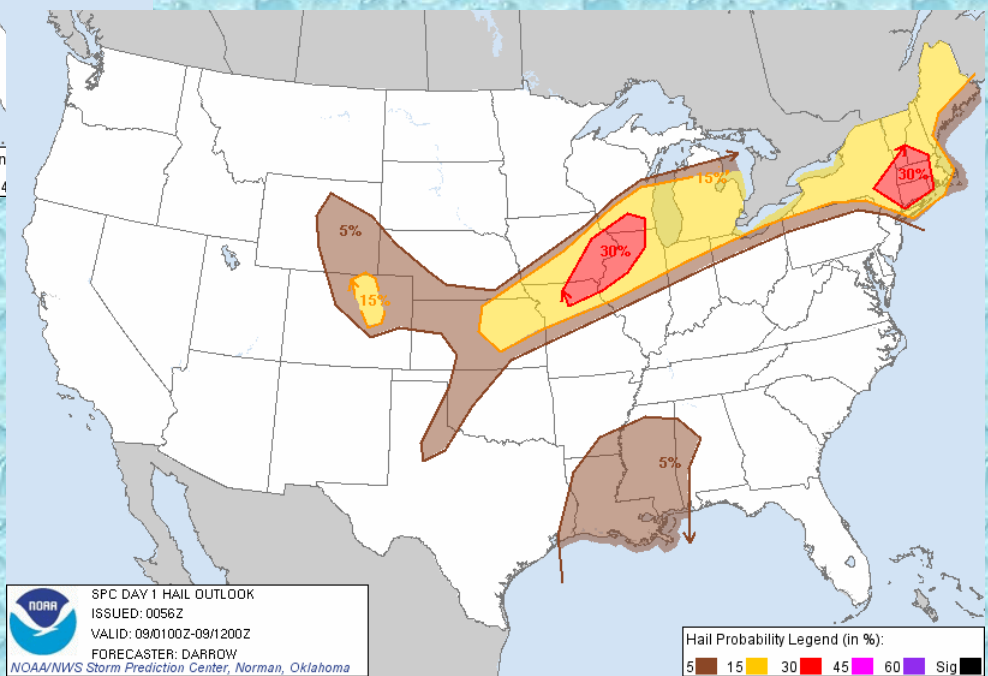
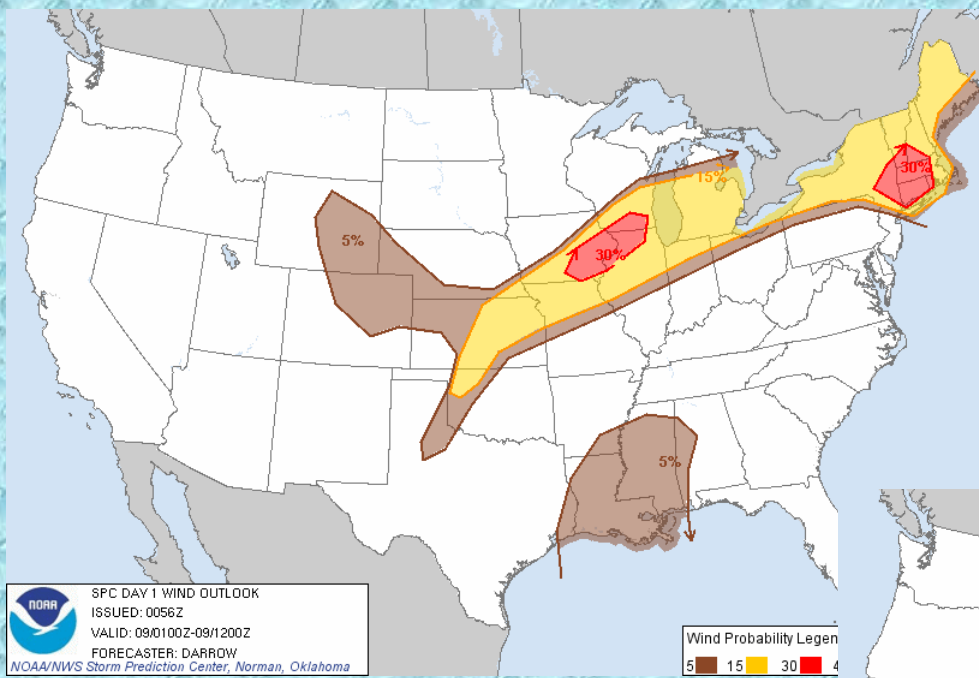
 SPC DAY 1 WIND OUTLOOK  
ISSUED: 2000Z  
VALID: 06/2000Z-09/1/2002  
FORECASTER: GOSS  
NOAA/NWS Storm Prediction Center, Norman, Oklahoma



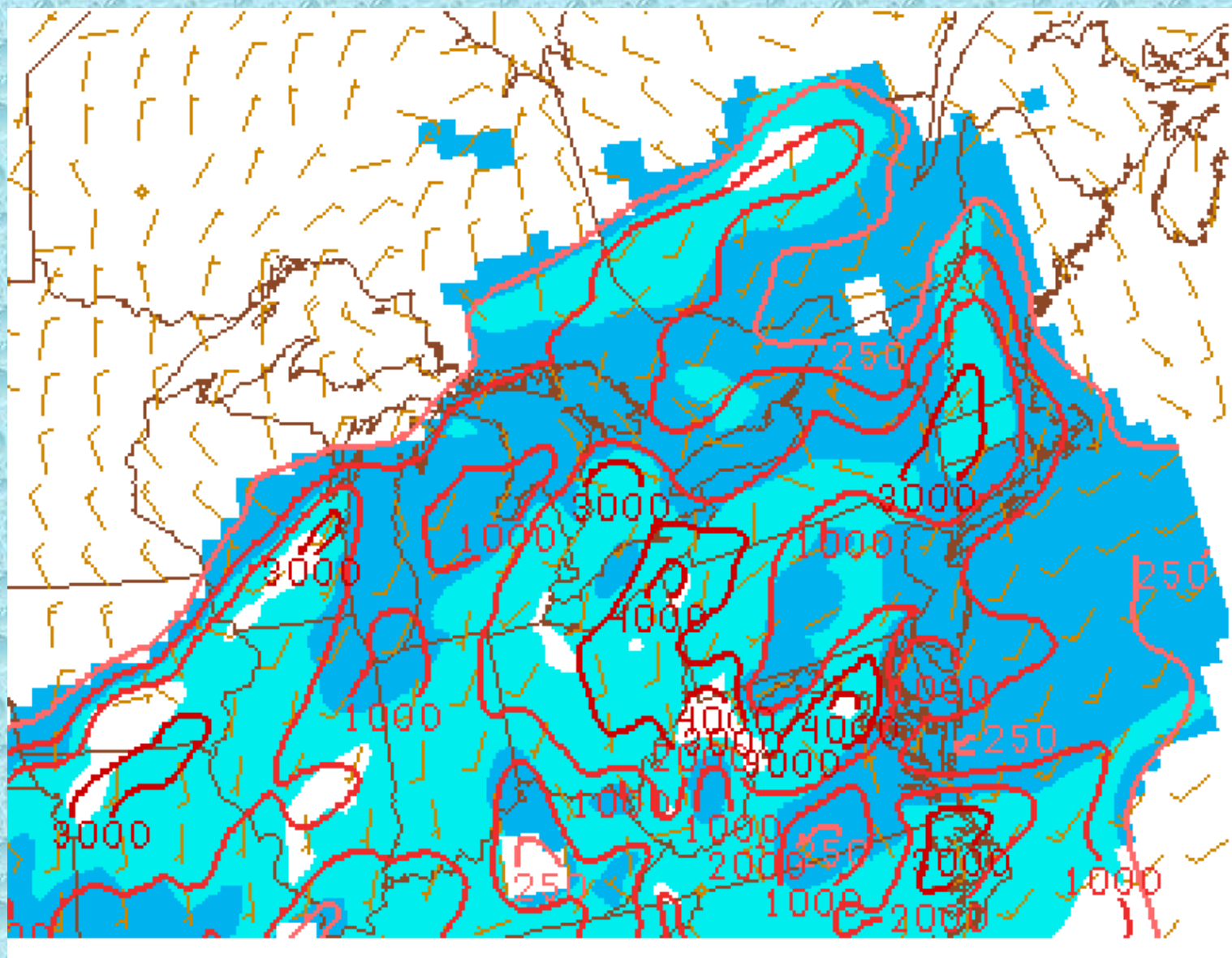
 SPC DAY 1 HAIL OUTLOOK  
ISSUED: 2000Z  
VALID: 06/2000Z-09/1/2002  
FORECASTER: GOSS  
NOAA/NWS Storm Prediction Center, Norman, Oklahoma



# SPC Day 1 Outlook: 01z

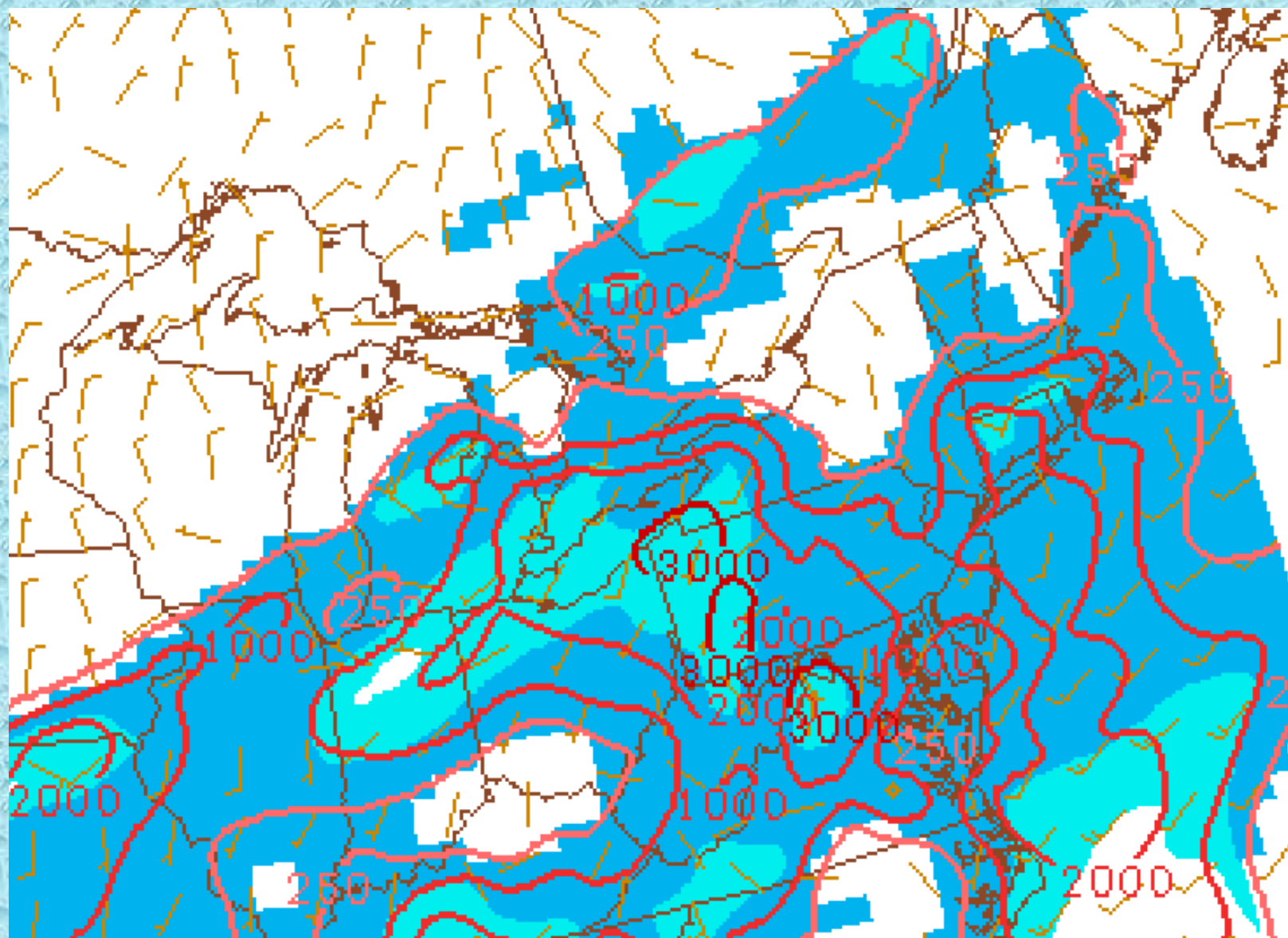


# 100mb ML CAPE: 01Z June 9

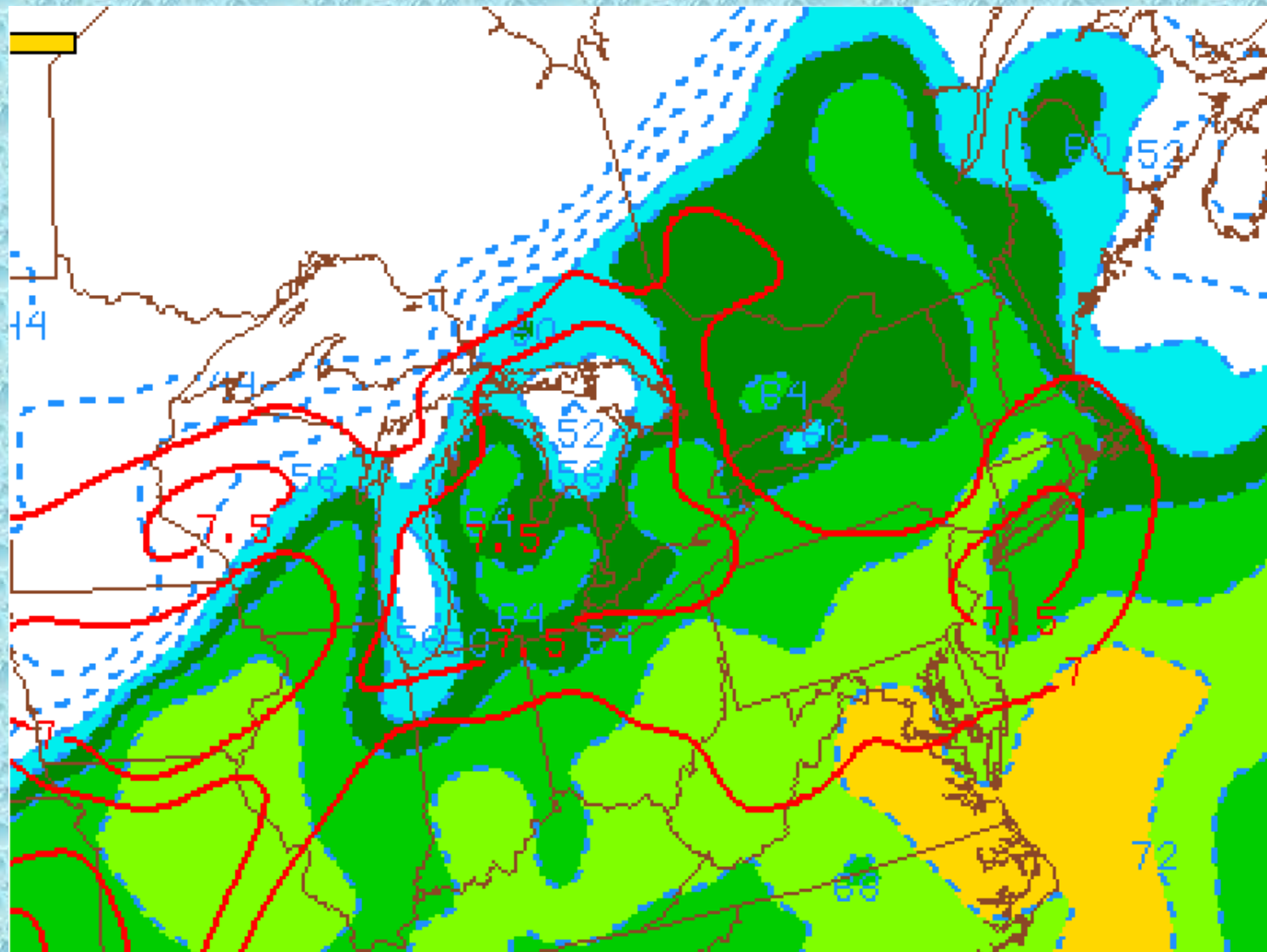




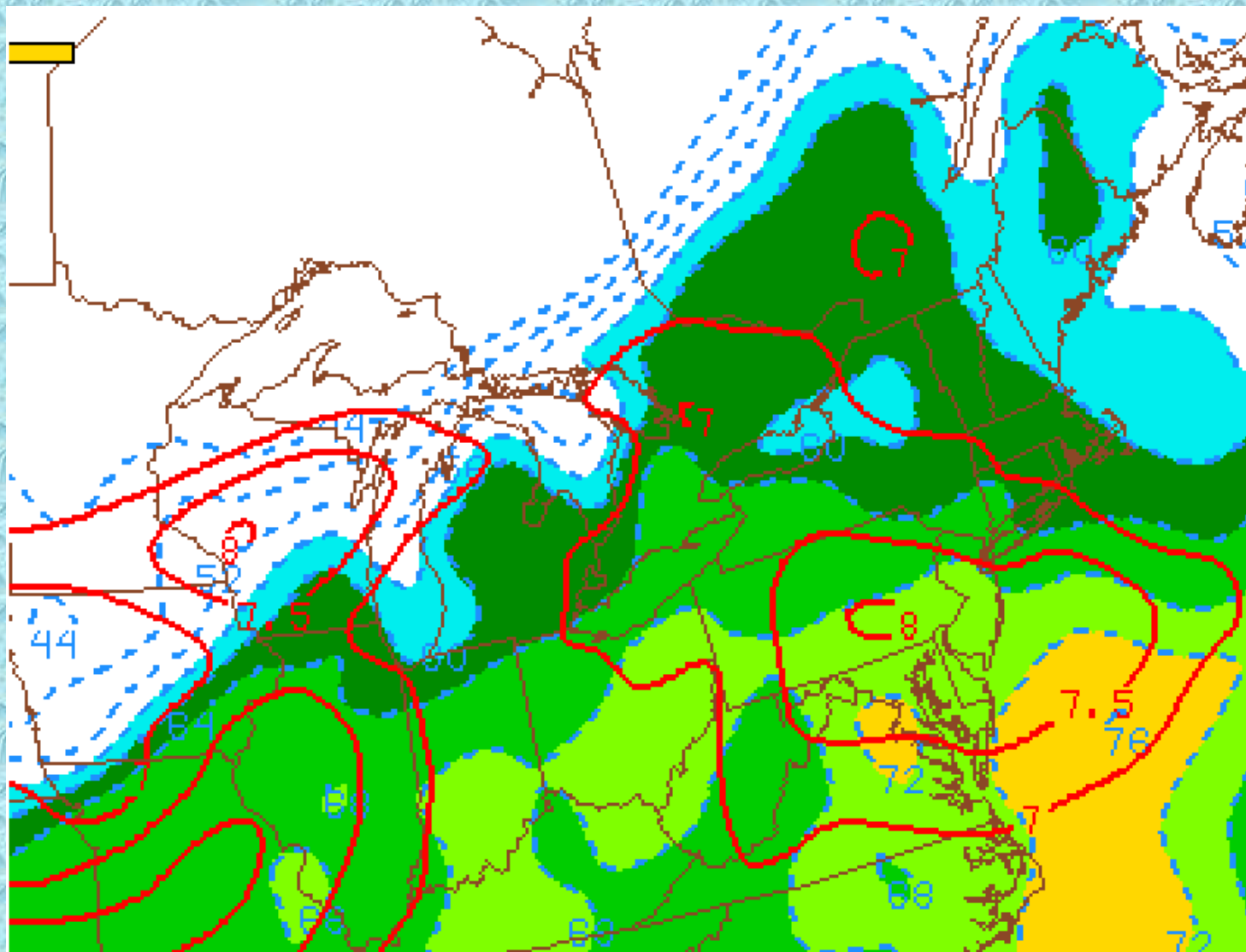
# 100mb ML CAPE: 06Z June 9



# Dewpoint and 700-500mb Lapse Rate: 01Z June 9

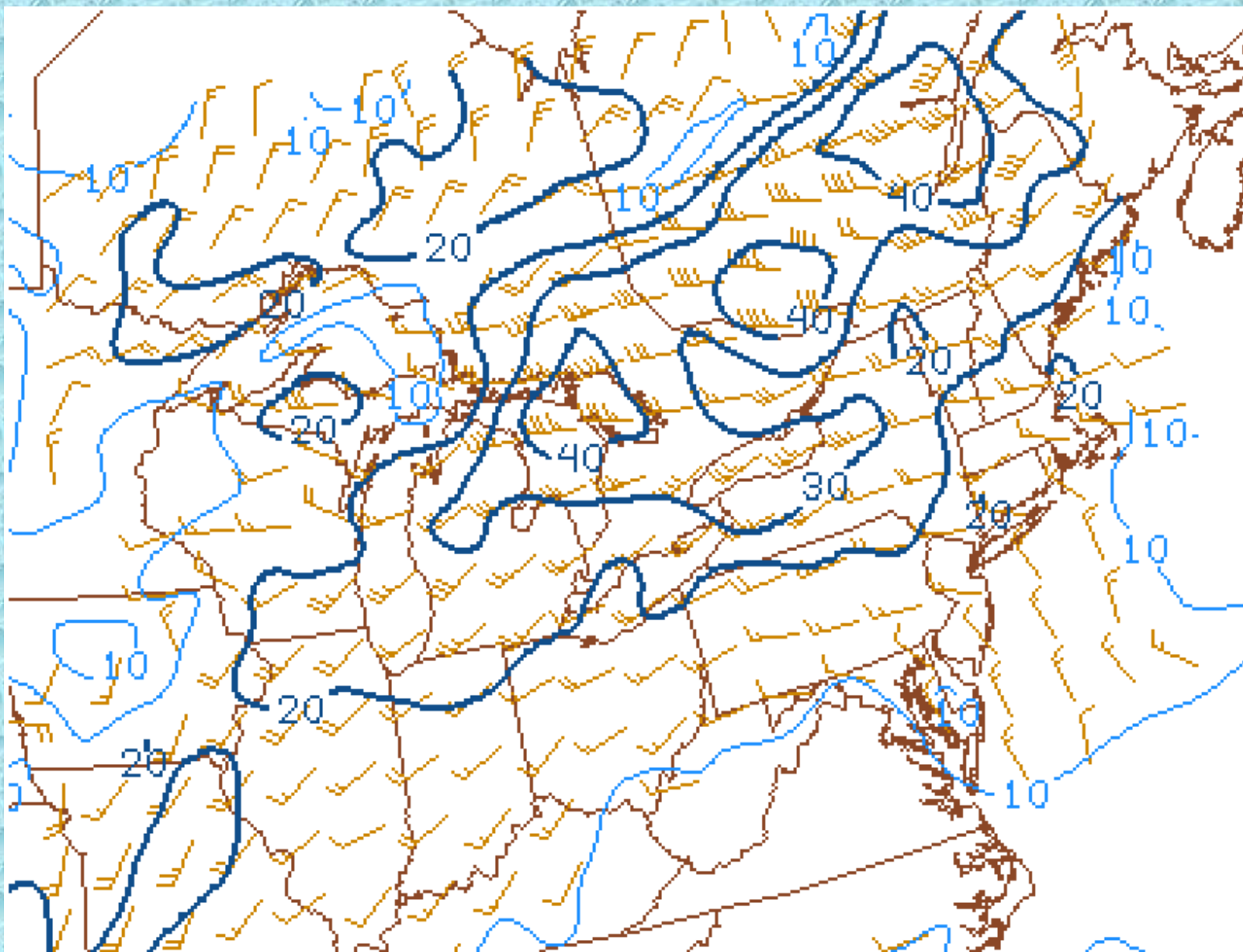


# Dewpoint and 700-500mb Lapse Rate: 06Z June 9

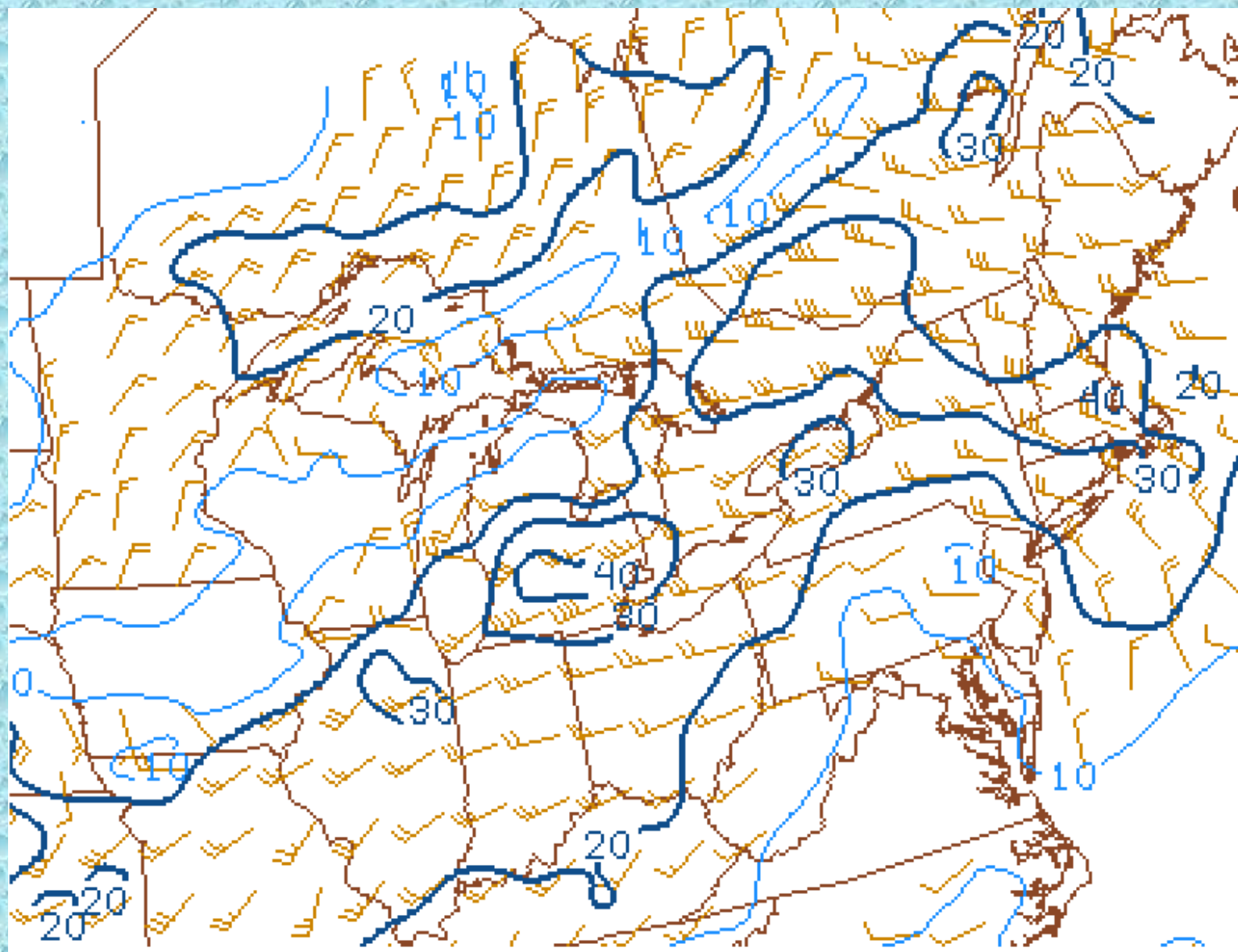




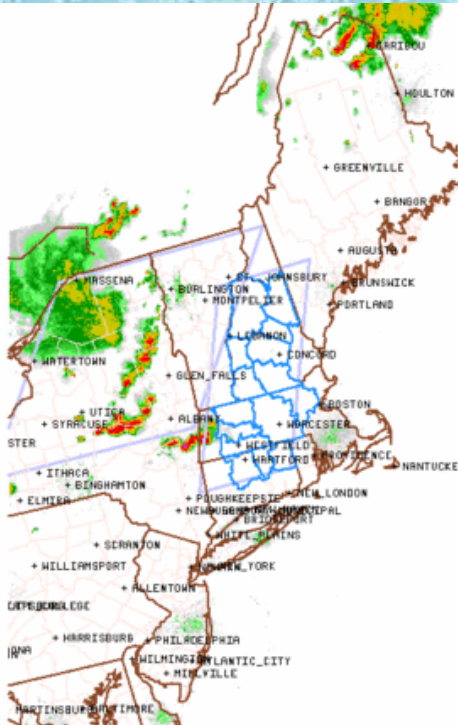
# 0-1km Shear: 01Z June 9



# 0-1km Shear: 06Z June 9



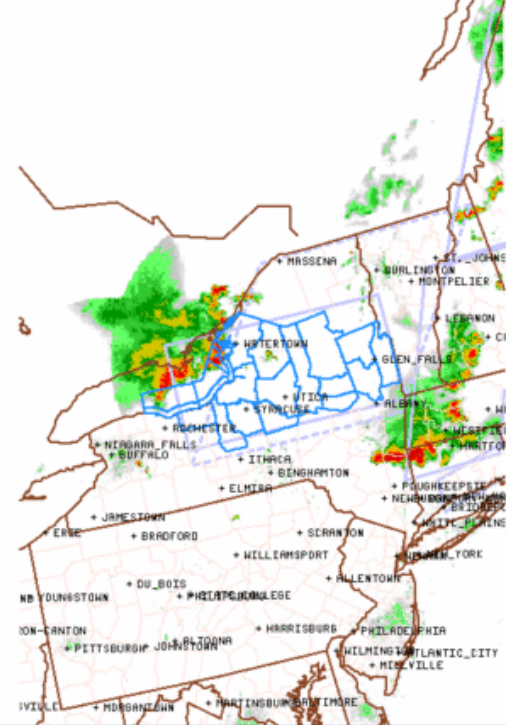
# SPC Watches



**Severe Thunderstorm Watch # 443 - Valid from 645 PM until 1100 PM EDT**

NOAA/NWS/Storm Prediction Center

Updated: 20110608/2246 UTC



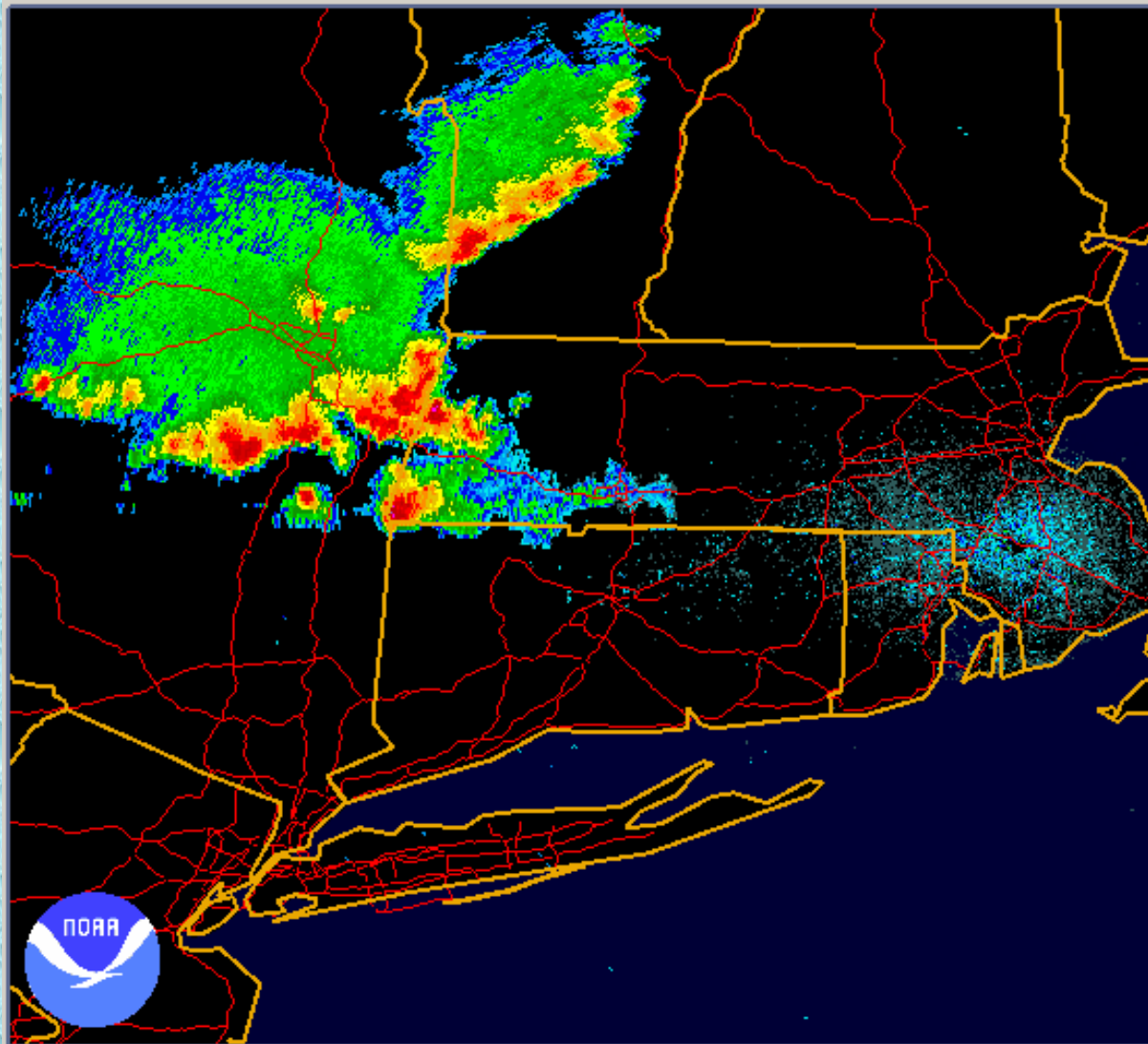
**Severe Thunderstorm Watch # 446 - Valid from 900 PM until 100 AM EDT**

NOAA/NWS/Storm Prediction Center

Updated: 20110609/0101 UTC



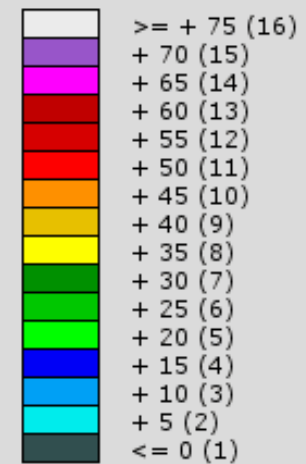
# Radar Loop: 00z to 06z June 9



NEXRAD LEVEL-II  
KBOX - BOSTON, MA  
06/09/2011 00:01:44 GMT  
LAT: 41/57/21 N  
LON: 71/08/13 W  
ELEV: 118 FT  
VCP: 12

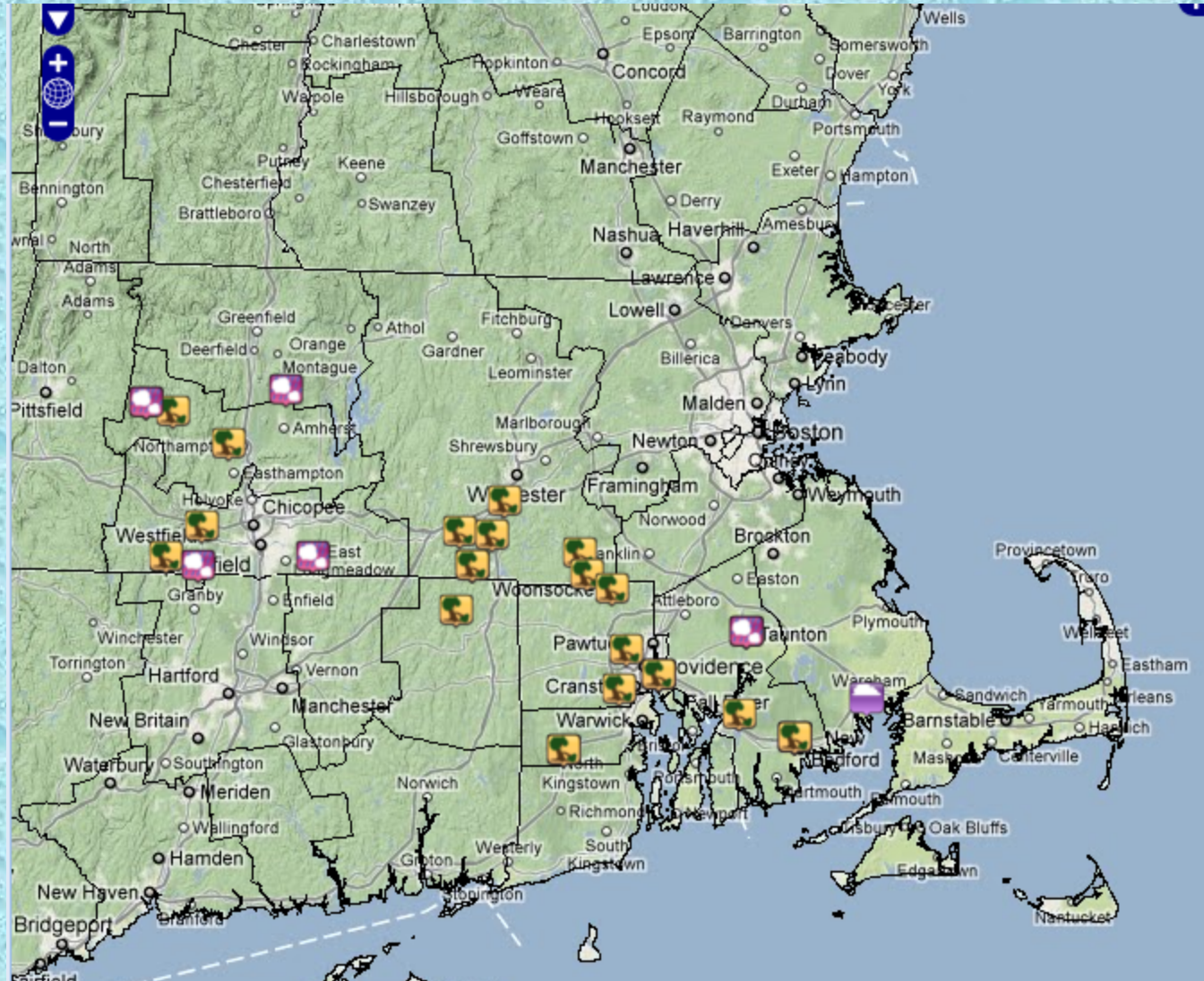
REFLECTIVITY  
ELEV ANGLE: 0.53

Legend: dBZ (Category)



# Storm Reports

- Many reports of downed trees and wires, hail up to nickel size
- Significant damage in Cranston and Providence





# Storm Damage in Providence

